

SPARKS.

The electric light system at Windsor, Ont., is to be enlarged.

Mr. R. Anderson, electrical engineer, of Ottawa, is installing a plant of 600 incandescent lights at Vankleek Hill, Ont., for Col. Wm. Higginson. Mr. Anderson is also installing a 100 light electric plant for the Geo. Matthews Co., Ltd., for their pork packing establishment at Hull, Que.

Mr. Geo. Gillies, of Gananoque, is said to run the only electric welder in Ontario. Power is supplied by the Gananoque Electric Light and Power Co. The articles to be welded are placed end to end in grooves suitable to their shape; two clamps come down fitting on the articles to be welded, which form the connecting link between the clamps and the copper plates underneath. A lever turns on the current and at the same time presses the articles together, and the welding is done almost simultaneously. Articles to the weight of eight pounds can be welded on this machine.

The Ottawa Electric Co., of Ottawa, Ont., are putting in an additional 240 k. w. alternator in their steam power station, where they already have two others of the same power, supplied by Ahearn & Soper. They are also putting in a 200 k. w. D. C. 500 volt generator for stationary motor service, and are engaged in remodelling their motor circuits so as to obtain better distribution. Their workshop is busy in the construction of a large switchboard, which will be 57 feet long, entirely fireproof, and constructed on modern principles. It will be placed in power house No. 1, late of the Standard Co., which will remain the distributing station. The generators in the other stations will be connected to this switchboard, and will be run at the accustomed voltage, the regulation being done at the central station. This company is at present installing a private fire alarm system connecting their stations, work shop and offices with the fire stations in their districts. The above changes were all designed by Mr. A. A. Dion, general superintendent and electrical engineer for the company, and are being carried out under his supervision by Messrs. J. Murphy, superintendent of power stations, W. G. Bradley, superintendent of construction, and W. H. Baldwin, hydraulic engineer. The company are sparing no pains or expense in making improvements so as to maintain a high standard of efficiency throughout the service. Eighty motors aggregating 350 h. p. are supplied with power by this firm, and 45,800 incandescent lamps are supplied with light.

The Bell Telephone Co'y

OF CANADA, LTD.

MONTREAL

MANUFACTURES AND HAS FOR SALE EVERY DESCRIPTION OF

TELEPHONIC and other ELECTRICAL APPARATUS

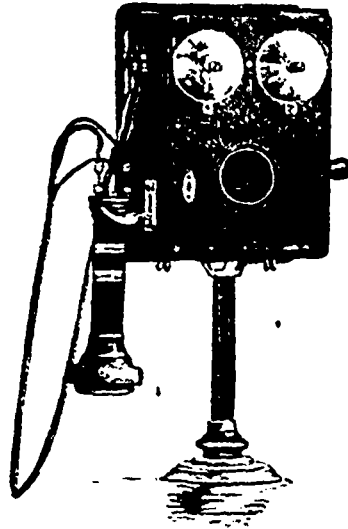
LINE MATERIAL AND SUPPLIES.

Will furnish tenders for supplying Warehouses, Public Buildings, Hotels and Dwellings with

PRIVATE AND LOCAL TELEPHONE SYSTEMS,
BURGLAR ALARMS, HOTEL, ELEVATOR AND
OTHER ANNUNCIATORS, HOTEL ROOM AND
FIRE CALL BELLS, ELECTRIC BELLS, PUSH
BUTTONS, ETC.

Will also furnish tenders to Cities, Towns and Villages for FIRE ALARM
AND POLICE PATROL SYSTEMS.

Catalogues will be furnished on application.



SALES DEPARTMENT:

MONTREAL:

Bell Telephone Building,
367 Aqueduct Street.

TORONTO

Bell Telephone Building,
37 Temperance Street.

HAMILTON

Bell Telephone Building,
Hughison Street.

OTTAWA:

Bell Telephone Building,
Queen Street.

QUEBEC:

Bell Telephone Building,
St. John and Palace Streets

WINNIPEG:

Forrest Block, Main Street.

ROBIN, SADLER & HAWORTH

MANUFACTURERS OF

OAK-TANNED LEATHER BELTING

MONTREAL AND TORONTO

ROBERT GRAHAM

Iron Founder and Machinist

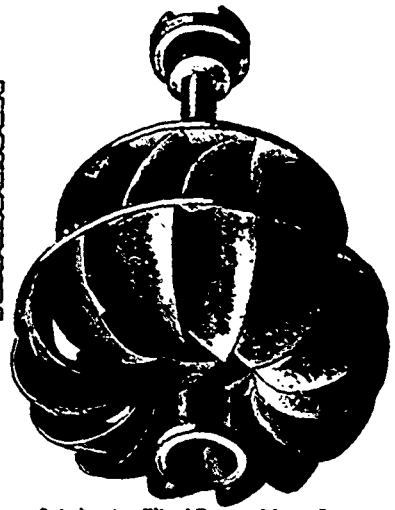
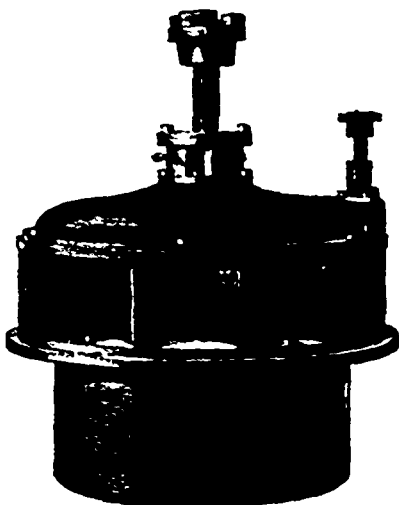
Water Wheels, Engines and Mill Machinery a Specialty.

... OTTAWA, ONT.

THE

STANDARD ... WATER WHEEL

MADE in sizes from 6 inches to 84 inches diameter. Wheel one solid casting. 84 per cent. of power guaranteed. In five pieces. Includes whole of case, either register or cylinder gate. Water put on full gate or shut completely off with half turn of hand wheel, and as easily governed as any engine.



Cut showing Wheel Removed from Case.

Write for Estimates, References and Catalogues of the STANDARD WATER WHEEL, also Milled and Rough Gearing of every size and description; Engines, Mill Machinery and Electric Power Plants; Latest Improved Band Saw Brazing Tables; Shears and Gummers; also Surface Grinder for Shingle Saws.