

# ALLIS-CHALMERS CO.

SUCCESSOR TO

THE EDWARD P. ALLIS CO.,  
MILWAUKEE, WIS.

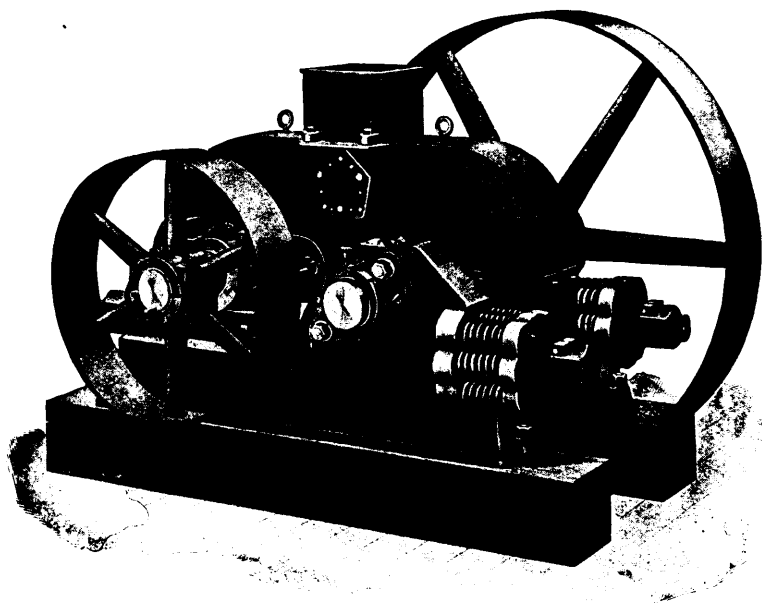
FRASER & CHALMERS,  
CHICAGO, ILL.

GATES IRON WORKS,  
CHICAGO, ILL.

DICKSON M'F'G CO.,  
SCRANTON, PA.

BUILDERS OF

## MINING MACHINERY



STYLE B CRUSHING ROLL.

### Crushing Rolls

Our standard line of crushing rolls consists of three styles, as follows:

Style A. (Formerly known as Gates High Grade Roll).

Style B. (Formerly known as Fraser & Chalmers Standard Roll).

Style C. (Formerly known as Fraser & Chalmers Belt Roll).

We aim to carry in stock all standard sizes of the above named rolls, and also keep on hand a full line of repair parts for same. All special sizes of these rolls mentioned above and crushing rolls formerly built by the constituent companies will be built upon special order. We are also prepared to furnish repair parts on special order for crushing rolls formerly manufactured by the constituent companies.

Builders of

**Gates Rock and Ore Breakers. Chilian Mills**  
Huntington Mill. Blake and Dodge Crushers

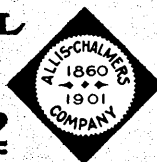
#### BRANCH OFFICES:

NEW YORK, Broad Exchange Bldg.  
BOSTON, Board of Trade Bldg.  
PITTSBURG, Frick Building  
MINNEAPOLIS, Corn Exchange Bldg.  
DENVER, 1649 Tremont Street  
SALT LAKE CITY, 209 S.W. Temple St.  
SPOKANE, Washington

#### GENERAL

**CHICAGO,**

LONDON, ENG., 160 Dashwood House



#### OFFICE

**ILL., U.S.A.**

JOHANNESBURG, South Africa

#### BRANCH OFFICES:

SAN FRANCISCO, Hayward Bldg.  
SEATTLE, Lumber Exchange Bldg.  
CHARLOTTE, N. C., Trust Bldg.  
NEW ORLEANS, Hennes Bldg.  
ATLANTA, GA., Equitable Bldg.  
BUTTE, MONT., 51 E. Broadway