

# Ingot Metals

ANTIMONY - TIN - COPPER  
ALUMINUM - LEAD - SPELTER

In Stock for prompt Shipment.

**A. C. LESLIE & Co., LIMITED**  
MONTREAL

## MARKETS—Continued from page 630.

**Boiler Tubes.**—Orders continue active. Lap-welded, steel, 1½-inch, 10c.; 1½-inch, 9c. per 10 feet; 2-inch, \$8.50; 2¼-inch, \$10; 2½-inch, \$10.00; 3-inch, \$11 to \$11.50; 3½-inch, \$18 to \$18.50; 4-inch, \$19 to \$20 per 100 feet.

**Building Paper.**—Plain, 27c. per roll; tarred, 35c. per roll. Demand is moderate.

**Bricks.**—In active movement, with very firm tone. Price at some yards \$9 to \$9.50, at others, \$9.50 to \$10 for common. Don Valley pressed brick are in request. Red and buff pressed are worth \$18 delivered and \$17 at works per 1,000.

**Broken Stone.**—Lime stone, good hard, for roadways or concrete, f.o.b., Schaw station, C.P.R., 75c. until further notice, per ton of 2,000 lbs., 1-inch, 2-inch, or larger, price all the same. Rubble stone, 55c. per ton, Schaw station, and a good deal moving. Broken granite is selling at \$3 per ton for good Oshawa.

**Cement.**—Car lots, \$1.75 per barrel, without bags. In 1,000 barrel lots \$1.60. In smaller parcels \$1.90 is asked by city dealers. Bags, 40c. extra. Demand good.

**Coal.**—The price of anthracite still remains at \$6.50 per ton, net, and pea coal at \$5.75; but as the usual monthly advances have been made at the mines, a higher figure may be anticipated in the near future. From these prices a discount of 25 cents per ton can be had on considerable lots. In the United States there is an open market for bituminous coal and a great number of qualities exist. We quote: Youghiogheny lump coal on cars here, \$3.75 to \$3.80; mine run, \$3.65 to \$3.70; slack, \$2.75 to \$2.85; lump coal from other districts, \$3.55 to \$3.70; mine run 10c. less; slack, \$2.60 to \$2.70; cannel coal plentiful at \$7.50 per ton; cook, Solvey foundry, which is largely used here, quotes at from \$5.75 to \$6.00; Reynoldsville, \$4.90 to \$5.10; Connellsville, 72-hour coke, \$5.25.

**Copper Ingot.**—The consumption of copper everywhere is enormous, and production keeps up also. The market may be termed steady at 14c., firm here.

**Detonator Caps.**—75c. to \$1 per 100; case lots, 75c. per 100; broken quantities, \$1.

**Dynamite,** per pound, 21 to 25c., as to quantity.

**Felt Roofing.**—The spring trade has opened very well at an uncharged price, which is \$1.80 per 100 lbs.

**Fire Bricks.**—English and Scotch, \$30 to \$35; American, \$25 to \$35 per 1,000. Fire clay, \$8 to \$12 per ton.

**Fuses.**—Electric Blasting.—Double strength 4 feet, \$4.50; 6 feet, \$5; 8 feet, \$5.50; 10 feet, \$6. Single strength, 4 feet, \$3.50; 6 feet, \$4; 8 feet, \$4.50; 10 feet, \$5, per 100 count. Bennett's double tape fuse, \$6 per 1,000 feet.

**Iron Chain.**—¼-inch, \$5.75; 5-16-inch, \$5.15; ¼-inch, \$4.15; 7-16-inch, \$3.95; ½-inch, \$3.75; 9-16-inch, \$3.70; ¾-inch, \$3.55; ¾-inch, \$3.45; ¾-inch, \$3.40; 1-inch, \$3.40, per 100 lbs.

**Iron Pipe.**—A steady request at former prices:—Black, 4-inch, \$2.03; ½-inch, \$2.25; ¾-inch, \$2.63; 1-inch, \$3.28; 1-inch, \$4.70; 1½-inch, \$6.41; 1½-inch, \$7.70; 2-inch, \$10.26; 2½-inch, \$16.40; 3-inch, \$21.42; 3½-inch, \$27.08; 4-inch, \$30.78; 4½-inch, \$35.75; 5-inch, \$40.85; 6-inch, \$51.70. Galvanized, ½-inch, \$2.86; ¾-inch, \$3.08; ½-inch, \$2.48; ¾-inch, \$4.41; 1-inch, \$6.15; 1¼-inch, \$8.66; 1½-inch, \$10.40; 2-inch, \$12.86, per 100 feet.

**Pig Iron.**—We quote Clarence at \$20.50, for No. 3; Cleveland, \$20.50; Summerlee, \$22; Hamilton quotes a little irregular, between \$19 and \$20. A fair quantity is moving, but the fresh inquiry is not large.

**Lead.**—A very fair demand exists; price, \$3.75 to \$3.85.

**Lime.**—Retail price in city acc. per 100 lbs. f.o.b., car; in large lots at kilns outside city 22c. per 100 lbs. f.o.b. car without freight. Demand is moderate.

**Lumber.**—Dimension stuff is in brisk demand, for present or later delivery. Prices are generally firm, especially in pine. We quote dressing pine \$32.00 to \$35.00 per M; common stock boards, \$8 to \$11; cull stocks, \$20; cull sidings, \$17.50; Southern pine dimension timber from \$10 to \$15, according to size and grade; finished Southern pine according to thickness and width, \$30 to \$40. Hemlock in car lots, \$17 to \$17.50; spruce flooring, car lots, \$22 to \$24; shingles, British Columbia, are steady, we quote \$1.10 lath growing scarce and stiffening, No. 1, \$4.60, white pine, 48-inch; No. 2, \$3.75; for 32-inch, \$1.70.

**Nails.**—Wire, \$2.25 base cut, \$2.60; spikes, \$2.85 per keg of 100 lbs.

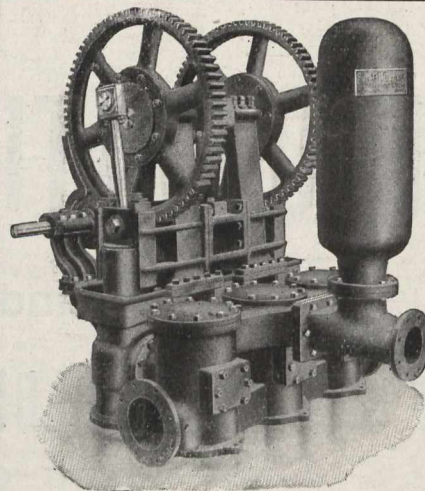
**Pitch and Tar.**—Pitch, unchanged at 70c. per 100 lbs. Coal tar, \$3.50 per barrel. Demand moderate.

**Plaster of Paris.**—Calced, New Brunswick, hammer brand, car lots, \$1.95; retail, \$2.15 per barrel of 300 lbs.

**Putty.**—In bladders, strictly pure, per 100 lbs., \$2.25; in barrel lots, \$2.10. Plasterer's, \$2.15 per barrel of three bushels.

**Ready Roofing.**—An active demand; prices are as per catalogue.

**Roofing Slate.**—Most of the slate used in Canada comes now from Pennsylvania or Maine, the Canadian supply being slender and mostly from the Rockland quarries of the Eastern Townships in Quebec. There is a great variety of sizes and qualities, so that it is difficult to indicate prices.



We Manufacture  
Power and  
Steam Pumps,  
Condensers,  
Travelling  
Cranes, etc.

Write for our  
Catalogue

## The Smart-Turner Machine Co., Ltd.

HAMILTON - - - - - CANADA

But No. 1 Bangor slate 10 x 16 may be quoted at \$7 per square of 100 square feet, f.o.b., cars, Toronto; seconds, 50c. less. Mottled, \$7.25; green, \$7, with a prospect of advance. Dealers are fairly busy.

**Rope.**—Sisal, 9½c. per lb.; pure Manila, 10½c. per lb., Base.

**Sand.**—Sharp, for cement or brick work, 90c. per ton f.o.b., cars, Toronto siding.

### Sewer Pipe.—

	4-in.	6-in.	9-in.	10-in.	12-in.	24-in.
Straight pipe per foot	..... \$0.20	\$0.30	\$0.65	\$0.75	\$1.00	\$3.25
Single junction, 1 or 2 ft long	.90	1.35	2.70	3.40	4.50	14.65
Double junctions	..... 1.50	2.50	5.00	.....	8.50	.....
Increasers and reducers	..... 1.50	2.50	.....	.....	4.00	.....
P. traps	..... 2.00	3.50	7.50	.....	15.00	.....
H. H. traps	..... 2.50	4.00	8.00	.....	15.00	.....

Business moderate; price, 73 per cent. off list at factory for car-load lots; 65 per cent. off list retail.

**Steel Beams and Channels.**—Active.—We quote:—\$2.75 per 100 lbs., according to size and quantity; if cut, \$3 per 100 lbs.; angles, 1¼ by 3-16 and larger, \$2.50; tees, \$2.80 to \$3 per 100 pounds. Extra for smaller sizes of angles and tees.

**Steel Rails.**—Current price for rails at the Soo, \$32 to \$34 for weights 60 to 100 lbs.

**Sheet Steel.**—American Bessemer, 10-gauge, \$2.50; 12-gauge, \$2.55; 14-gauge, \$2.35; 17, 18, and 20-gauge, \$2.45; 22 and 24-gauge, \$2.55; 26-gauge, \$2.65; 28-gauge, \$2.80.

**Sheets Galvanized.**—Apollo Brand.—Sheets 6 or 8 feet long, 30 or 36 inches wide; 10-gauge, \$3.00; 12-14-gauge, \$3.00; 16, 18, 20, \$3.20; 22-24, \$3.35; 26, \$3.50; 28, \$3.95; 29, \$4.25; 30½, \$4.25 per 100 lbs. Fleur de Lis—28-gauge, \$4.10; 26, \$3.80 per 100 lbs. A very large tonnage of all sorts has been booked.

**Tank Plate.**—3-16-inch, \$2.40 per 100 lbs.

**Tool Steel.**—Jowett's special pink label, 10½c. Cammel-Laird, 16c. "H.R.D." high speed tool steel, 65c.

**Tin.**—In spite of limited fluctuations abroad, 35c. is still the price. A fair movement continues.

**Wheelbarrows.**—Navy, steel wheel, Jewel pattern, knocked down, \$21.60 per dozen; set up, \$22.60. Pan Canadian, navy, steel tray, steel wheel, \$3.30 each; Pan American, steel tray, steel wheel, \$4.25 each.

**Zinc Spelter.**—The market can no longer be described as lively; a steady but limited movement goes on at \$5.65 to \$5.90 per 100 lbs.

### CAMP SUPPLIES.

**Butter.**—Dairy prints, 18 to 20c.; creamery prints, 22 to 23c.; the creamery output is now increasing every week.

**Canned Goods.**—Peas, \$1.15 to \$1.75; tomatoes, 3s, 85c. to 95c.; pumpkins, 3s, 90 to 95c.; corn, 80 to 85c.; peaches, 2s, white, \$1.50 to \$1.60; yellow, \$1.90 to \$1.95; strawberries, 2s, heavy syrup, \$1.50 to \$1.85; raspberries, 2s, \$1.50 to \$1.95.

**Cheese.**—Moderately firm; old cheese, large, 12½c.; twins, 13c.; new, 11½ to 11¾c.

**Coffee.**—Rio, green, 11 to 12½c.; Mocha, 21 to 23c.; Java, 20 to 31c.; Santos, 11 to 15c.

**Dried Fruits.**—Raisins, Valencia, 5¼ to 6¼c.; seeded, 1-lb. packets, fancy, 7½ to 8c.; 16-oz. packets, choice, 7 to 7½c.; 12-oz. packets, choice, 6c.; Sultanias, good, 5 to 6c.; fine, 6 to 7c.; choice, 7 to 8c.; fancy, 8 to 9c.; Filippina currants, 6¼ to 7c.; Vostirzas, 8¼ to 9c.; uncleaned currants, 4c.

**Flour.**—Manitoba Flour.—Quotations at Toronto are:—First patents, \$4.20; second patents, \$4.00; strong bakers', \$4.75. Ontario Flour.—Winter wheat patents, \$4.10 per bbl.

**Lard.**—Tierces, 15¾c.; tubs, 16c.; pails, 16¼c.

**Molasses.**—Barbadoes, barrels, 37 to 45c.; West Indian, 27 to 30c.; New Orleans, 30 to 33c. for medium.

**Pork.**—Market very firm, short cut, \$29 to \$30 per barrel; mess, \$27 to \$28.

**Rice.**—B. grade, 3¼c. per lb.; Patna, 5 to 5½c.; Japan, 5 to 6c.

**Salmon.**—Fraser River, talls, \$2; flats, \$2; River Inlet, \$1.55 to \$1.75.

**Smoked and Dry Salt Meats.**—Long clear bacon, 15 to 16¼c. per lb., tons and cases; hams, large, 17c. to 17½c.; small, 17½ to 18¼c.; rolls, 15 to 15¼c.; breakfast bacon, 19 to 20c.; backs (plain), 20 to 21c.