

**NOW YOU SEE IT  
AND NOW—YOU DON'T**

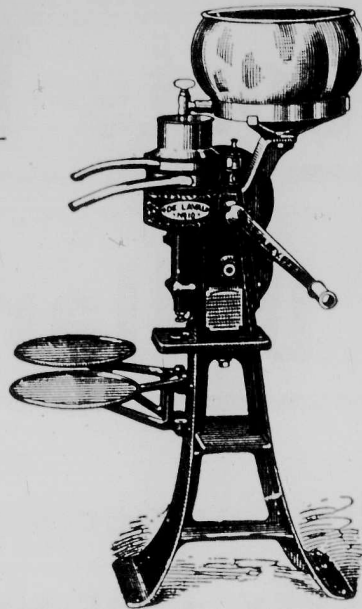
The \$5.00 or \$10.00 which assumed enormous proportions when looked at in the light of a saving on the first cost of a cream separator are quickly lost sight of when the cheap machine and its results in actual use are compared with

**The DE LAVAL Separator**

Lasts a lifetime and the qualities which satisfy are doing business long after price is forgotten.

**The De Laval Separator Co.**

MONTREAL WINNIPEG VANCOUVER

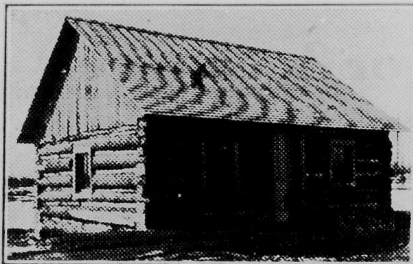


**Wisconsin, U.S.A. is the State**

Where the people are progressive, independent, intelligent and prosperous.

**VILAS COUNTY, WISCONSIN**

offers great opportunities for the man of moderate means who wants to make a home for himself; for the laborer in the city who wants to get out to the free and open country and become independent and prosperous; for the farmer who is renting a high-priced farm and is tired of giving most of his earnings to the owner; for the farmer's boy who wants a place of his own; for the investor who wants a safe and sure profit on his investment; for the family who wants a summer home near the beautiful Eagle Waters, a chain of twenty-five pretty lakes extending over fifty miles in length.



**WE ARE NOW BUILDING HOUSES**

For those who buy land of us—good substantial log structures, 16x22 feet, roofed, floored, chinked and plastered, so that a man can move his family right up and start farming at once. House and 80 acres for \$1000, small cash payment and balance to suit.

We will sell 40 acre farms for \$10 down and \$10 a month—no interest, no taxes, and if buyer dies before payments are completed, we give the farm free to his family.

Make your plans to go to Eagle River, Vilas County, on the Chicago & Northwestern Railroad and see for yourself what we have and what we are doing there. Our representatives will meet you and take you right out to any piece of land you want to see and we will pay car fare from any point within 500 miles, if you buy land.

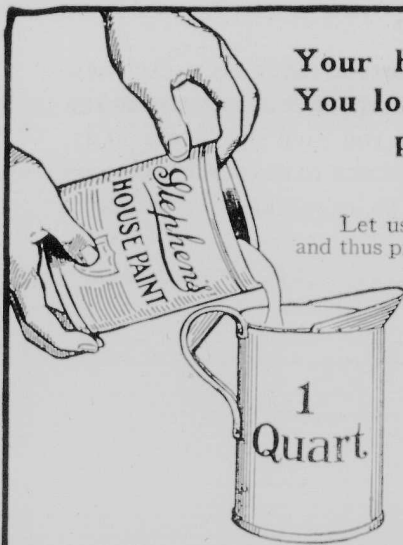
Vilas County, Wisconsin, has been proven good land for farming, dairying and stock raising. Fertile soil, invigorating climate, adequate drainage, active ready markets, good roads, near to railroad, schools and churches.

The price of this land ranges from \$8 to \$15 an acre. Call or write for map and book and full particulars.

Dept. 25 G. F. Sanborn Company, 181 La Salle St., Chicago, Ill.

**The Farmer's Library**

We are satisfied that we have the most complete library of Farm Books desirable and would like you to glance over our list. Also note Premium Offers. Send at once.



Your house or barn needs painting. You lose money in the value of your property every day you leave them unpainted.

Let us tell you how little it will cost you to paint, and thus properly protect your house or barn. We ask you to send us their measurements and we will give you an expert estimate. You will find when you see how low this cost will be, that it is not economy at all to let them go unpainted, exposed to rain and climatic changes.

We will tell you also why it is wise to do your painting with Stephens Paints—paints made by Western Paint Specialists with twenty-seven years' experience—paints that combine the exact amount of Manitoba Linseed oil (acclimatized), with the exact amount of pure pigment required to withstand both the blistering heat of 100 degrees and the cracking cold of 40 below.

You will show your wisdom when you protect your buildings with Stephens Paint—"the Paint with the long life."

Write for interesting free booklet No. 15 and color cards.

Progressive hardware dealers will fill your orders.

G. F. STEPHENS & CO., LIMITED, WINNIPEG, CANADA. PAINT AND VARNISH MAKERS.



**Stephens PAINT**

**DOMINION SHELLS**

**DUPONT SMOKELESS**

PERFECT AMMUNITION

For Trap and Field Shooters

SPECIFY

IMPERIAL OR SOVEREIGN SHELLS

AND GET THE BEST

Loaded by the Dominion Cartridge Co., Ltd. Montreal, Canada



PACKING TREES AT PELLHAM'S NURSERY FOR WESTERN TRADE.

**Reliable Agents Wanted**

Now to sell Fruit Trees, Forest Seedlings, Berry Bushes, Flowering Shrubs. Good pay weekly. Outfit free. Exclusive territory. 600 ACRES UNDER CULTIVATION

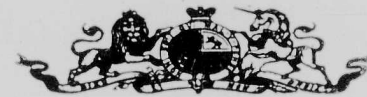
We grow exclusively for our Western trade varieties we guarantee hardy and recommended by Indian Head and Brandon experimental farms.

We supply large and well developed trees and plants which will withstand severe cold. Write for terms. State whether you can work whole or part time.

Address—Promotion Dept.

**PELHAM NURSERY CO.**

Goderham Building TORONTO, ONT.



**SYNOPSIS OF CANADIAN NORTHWEST LAND REGULATIONS**

ANY person who is the sole head of a family or any male over 18 years old, may homestead a quarter section of available Dominion land in Manitoba, Saskatchewan or Alberta. The applicant must appear in person at the Dominion Lands Agency or Sub-Agency for the district. Entry by proxy may be made at any agency, on certain conditions, by father, mother, son, daughter, brother or sister of intending homesteader.

Duties.—Six months residence upon, and cultivation of, the land in each of three years. A homesteader may live within nine miles of his homestead on a farm of at least 80 acres solely owned and occupied by him or by his father, mother, son, daughter, brother or sister.

In certain districts, a homesteader in good standing may pre-empt a quarter section alongside his homestead. Price \$3.00 per acre. Duties.—Must reside six months in each of six years from date of homestead entry (including the time required to earn homestead patent) and cultivate fifty acres extra.

A homesteader who has exhausted his homestead right and cannot obtain a pre-emption may take a purchased homestead in certain districts. Price \$3.00 per acre. Duties.—Must reside six months in each of three years, cultivate fifty acres and erect a house worth \$300.00.

W. W. CORY, Deputy of the Minister of the Interior.

N.B.—Unauthorized publication of this advertisement will not be paid for

**SEED OATS**

LINCOLN 1.65c. per bus. F. O. B. Birtle WAVERLEY 1.75c. Miniota or Uno.

grown on breaking, no wild oats, true to name, cleaned ready. DANISH 1.50c. per bus. from backsetting, not on ISLAND 1.40c. account occasional black oat cleaned and not guaranteed, otherwise a splendid seed for main crop, true to name, large plump kernel, grade No. 1 white, bags extra.

COLTART & OBR, Beulah, Man.

**Far**

Vol. XLV.

**FARMER'S AND HOME JOURNAL**

ESTABLISHED

Canada's Foremost Agricultural Journal Published Every Week

SUBSCRIPTIONS

Canada and Great Britain, per annum

United States and Foreign, per annum

Date on label shows time subscription is sent to all subscribers until for its discontinuance, according to arrangements.

British Agency, W. W. C. Norfolk St., London, W. C.

Specimen copies mailed free

Address all communications to individual.

FARMER'S AND HOME JOURNAL

OF WINNIPEG

14-16 PRINCESS STREET

EDITED BY

W. W. CORY

W. W. CORY

W. W. CORY

W. W. CORY

W. W. CORY

W. W. CORY

W. W. CORY

W. W. CORY

W. W. CORY

W. W. CORY

W. W. CORY

W. W. CORY

W. W. CORY

W. W. CORY

W. W. CORY

W. W. CORY

W. W. CORY

W. W. CORY

W. W. CORY

W. W. CORY

W. W. CORY

W. W. CORY

W. W. CORY

W. W. CORY

W. W. CORY

W. W. CORY

W. W. CORY

W. W. CORY

W. W. CORY

W. W. CORY

W. W. CORY

W. W. CORY

W. W. CORY

W. W. CORY

W. W. CORY

W. W. CORY

W. W. CORY

W. W. CORY

W. W. CORY

W. W. CORY

W. W. CORY

W. W. CORY

W. W. CORY

W. W. CORY

W. W. CORY

W. W. CORY

W. W. CORY

W. W. CORY

W. W. CORY

W. W. CORY

W. W. CORY

W. W. CORY

W. W. CORY

W. W. CORY

W. W. CORY

W. W. CORY