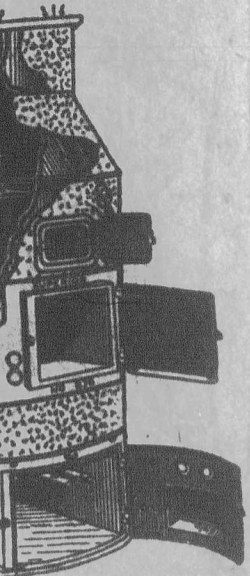


Best Superior
Keeps Moist,
in Air



properly-located water pan the
pure and healthful, and the
moisture is insured. The
vaporizes the water and
the right quantities, provid-
ing here. This humidifier also
prevents drying out furniture
work. A PILOT SUPERIOR
MODEL can be installed in six

Manufactured by

Foundry Co., Limited
Toronto, Ontario

Easy
to
Drive.
Holds
Firmly
in
Place.

accustomed to the back-
of digging post-holes,
wood posts, filling in and
will be delighted with the
economy with which
ESTON
POSTS
The sharp bevelled point
few hammer-blows, and
late binds the post so
no replacements are re-
quired at one load to
the field—drive them in a
good-looking, permanent
for folder.
WHEEL & SIDING COMPANY,
LIMITED
TORONTO, ONTARIO

**SQUARE DEAL
FARM ENGINES**

Demonstrate on Your Farm
Buy a Gilson Engine without charge
to prove what it
you in dollars and
you how much help
it gives—how many back-break-
ers. Pay us on easy terms—no
down. Economy and dependability
Gilson the best selling engine in
to-day for catalog, price and Easy
Payment Plan.
GILSON MFG.
Company, Ltd.
110 York Street
GUELPH, ONT.

GILSON
"Like Sixty"

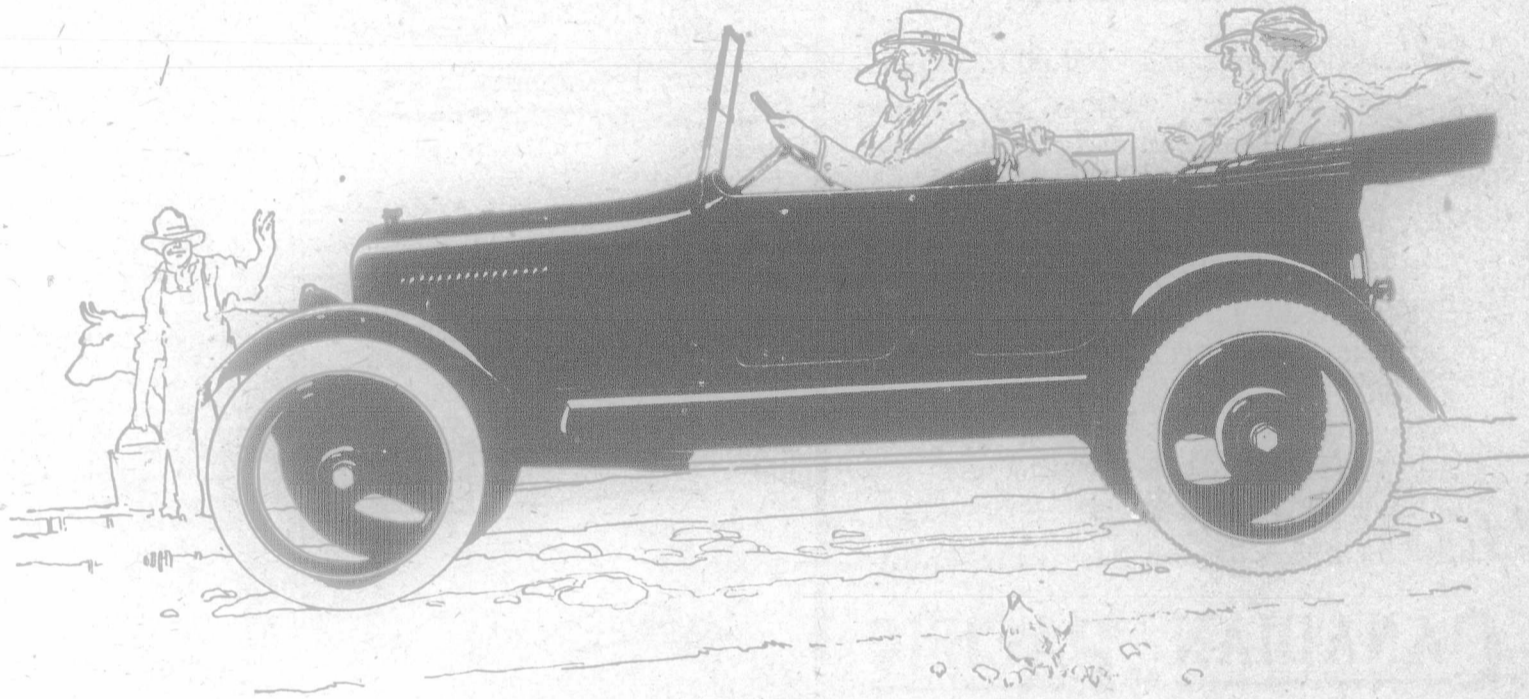
AGENTS—Fetherstonhaugh
old-established firm. Patent
Head Office: Royal Bank
Toronto. Ottawa Office: 5
Offices throughout Canada.

"Rate" Advs. Pay.

Overland

TRADE MARK REG.

Features That Specifications Fail to Describe



FARMERS want facts. It is a fact that farmers all over
Canada testify to the remarkable comfort, economy and
sturdiness of the Overland.

It is a fact that the car has demonstrated its stamina to
farmers in every province—its capacity to stand all kinds of
punishment without damage.

It is a fact that farmers everywhere are finding that the
Overland handles and turns easily, and that it costs little to
own and operate.

Examine its bright, weather-resisting enamel finish.
See how easily its detachable upholstery removes
for carrying farm produce to town, or farm supplies
from the city.
Experience its many conveniences, such as electric
starting and lighting, and three-speed transmission.
Note how high-grade and complete it is in every
respect.
To fully appreciate how smoothly it rides, pick out
rough roads and drive it.

Then you *know* what a wonderful car the Overland
really is for rural districts and varied uses on the farm,
and why it is gaining in popularity among farmers.
In one large Canadian plant, the Overland is built
under the supervision of Canadians who appreciate
Canadian conditions and build accordingly.
Have your nearest Overland dealer demonstrate
this car over a particularly rough stretch of road.
Or send for illustrated catalogue.

WILLYS-OVERLAND LIMITED
Sedans, Coupes, Touring Cars and Roadsters
Head Office and Factories, Toronto, Canada
Branches: Toronto, Montreal, Winnipeg and Regina