

AUXILIARY HOT WELL AND PUMP EQUIPMENT.



OIL SWITCHES AND BUSES FOR 42,000 VOLT CURRENT.

centre ornament. All the main partitions throughout are of brick or hollow tile and the others of plaster on metal lath and steel stud-ings.

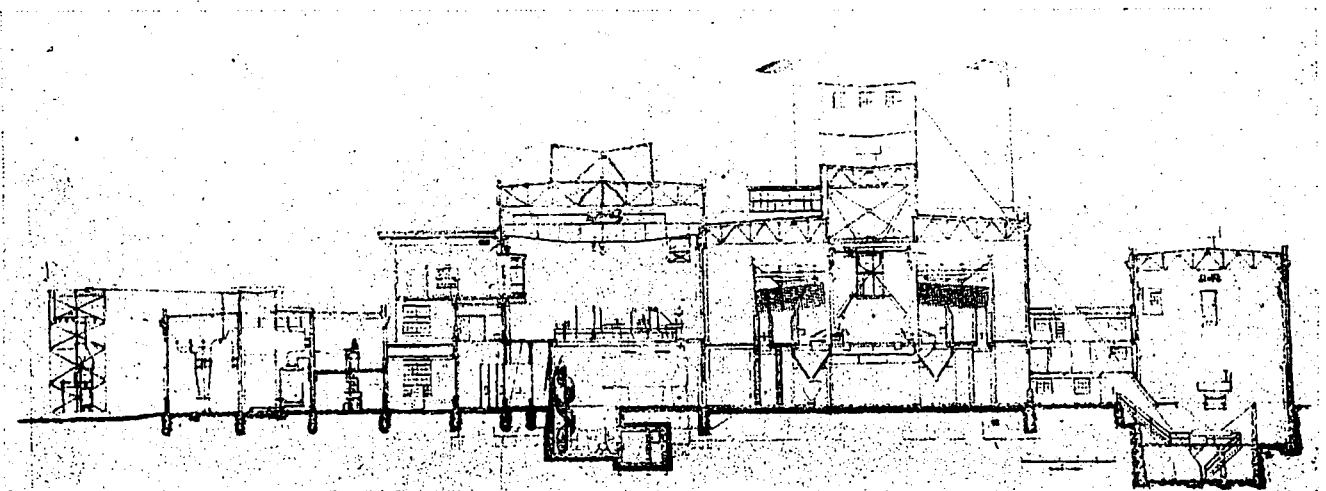
A unique feature in connection with the installation of the boilers was their complete insulation against loss from radiation. In the walls between the fire brick and the outer course of common brick, was inserted a layer on nonpareil insulating brick, while the top surfaces of the boiler drums were insulated with these brick also. It is said that one layer of this brick will retain as much heat as ten layers of common brick. This naturally results in a considerable saving in fuel and better working conditions for the men. These brick are made of diatomaceous earth or kieselguhr, and are very light weighing

only 1½ lbs., although they have a crushing strength of 140 lbs. to a square inch.

All of the steam piping and heaters were insulated with nonpareil high pressure covering. On high pressure lines 2 in. thickness covering was used, and on low pressure lines 1 in. covering. Provision was also made for repairs to flanges by the application of insulated flange casings so constructed that they can be readily taken off and replaced.

British Housing Plans After The War

The matter of devising ways and means to overcome the present great shortage of houses in the United Kingdom is an after-the-war problem to which serious attention is being given by the authorities. While it is held that



SECTIONAL ELEVATION, DOMINION POWER AND TRANSMISSION COMPANY PLANT, HAMILTON, ONT.