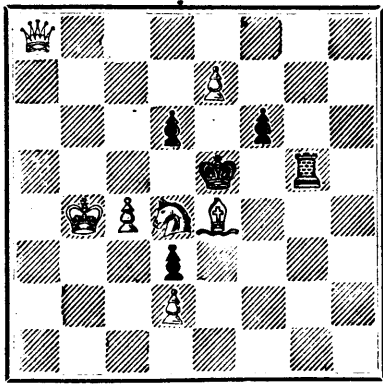


PROBLEM No. 180. By J. MENZIES. BLACK.



WHITE White to play and mate in three moves.

NOTES.

Concerning chess precocity America can boast of such geniuses as Masters Harry Boardman and Frank Norton, who are hardly yet in their teens.

A monastery in Brittany, France, has contributed a plain-looking mahogany table, with an inlaid draught or chess-board on the surface.

The Glasgow Weekly Herald has an interesting article entitled "The Paris Chess Congress," discussing the chances of success of the various aspirants for the honour of championship.

We are informed that Mr. Bird left England some weeks ago in order to be present at the Chess Congress to be held in connection with the Paris Exhibition.

CHESS IN ENGLAND.

GAME 270TH.

(From the Westminster Papers.)

Played at the St. George's Chess Club between Herr Zukertort and the Rev. Professor Wayte.

- WHITE. (Herr Zukertort.) 1. P to K 4 2. P to K B 4 3. Kt to Q B 3 4. P to K B 4 5. Kt to K 5 6. P to Q 4 7. B to B 4 8. Kt to Q B 3 9. B takes B P 10. B takes R (ch) 11. B takes P 12. Q to Q 3 13. Castles H R (h) 14. B to Kt 5 15. Kt to Kt 5 16. Q to B 4 (ch) 17. R to B 7 18. Q to K B sq (d) 19. Kt takes Q B P 20. Q takes Kt 21. Kt takes R 22. R to K B sq (f) 23. Q to K 5 24. R to B 7 25. R to R sq 26. R to B 8 (ch) 27. Q takes B (ch) (h) 28. Q takes Q P (ch) 29. Q to Q 7 (ch) 30. Q to Q 6 (ch) 31. B to Q 2 32. Q to Q 3 33. Kt to B 7 34. Q to Kt 5 (ch) 35. B to B 4 36. Kt takes Q (i) 37. Kt to B 5 38. P to Kt 3 39. Kt to K 6 40. B to K 3 41. Kt to B 4 (ch) 42. B takes Kt 43. P to K 4 44. K to Kt 2 45. K to B sq 46. K to K 2

Drawn Game.

- (a) By way of variety, I suppose, and possibly enough somewhat tired of P to Q. (b) I feel quite certain that Castling on the Queen's side is preferable, my reason being that White has more freedom and safety while Black has a confined position and is reduced to being almost a spectator of his opponent's operations. (c) Q to Q 2 at once is far superior. (d) 18 Q takes Q, followed by 19 R takes B and 20 P to Q 5, seems sufficiently satisfactory. (e) Played with excellent judgment, and achieving the desired result of sustaining the least loss. (f) I favour 22 Q to Q 3 (g) Here Professor Wayte had a forced draw, an opportunity for not making use of which he ought to have suffered, e. g. 25 B takes Q, 26 R takes Q, whereupon Kt draws by perpetual check. (h) Here Zukertort makes a slip not to be expected from him of all men, for he overlooks a mate in two moves. It is also evident that Black had not seen this when he played 25 Q takes K P.

(4) The commencement of an end game, which apparently ought to and does not end in a draw.

CHESS IN THE UNITED STATES. GAME 271ST.

Played in the Far West between father and son (Mr. D. R. Norton and Master Frank), former yielding the odds of Q R.

- WHITE.—(D. P. N.) 1. P to K 4 2. Kt to K B 3 3. B to B 4 4. P to Q Kt 4 5. Castles 6. P to B 3 7. P to Q 4 8. P to K 5 9. P takes P 10. P to Q 5 11. Q to B 2 12. Kt to K Kt 5 13. P to K R 4 14. P to K 6 15. P takes P 16. Kt to K B 6 17. Q to B 3 18. P takes R 19. B takes Q 20. B to R 6 21. Q to R 8 22. Q takes P 23. P to Kt 4 24. P to Kt 5 25. P to B 7 26. Kt to Q 2 27. Q to B 3 28. Kt takes Kt

White mates in two moves.

SOLUTIONS.

Solution of Problem No. 179.

- WHITE. 1. Q to K R 2 2. Q to R 7 mate

There are other variations.

Solution of Problem for Young Players No. 177.

- WHITE. 1. R to Q B 2 2. R to K Kt 2 (dis. ch) 3. R to K Kt 5 mate

PROBLEMS FOR YOUNG PLAYERS, No. 178.

- WHITE. K at K 2 R at K Kt 7 Kt at K Kt 6 Pawns at K 3 K 5 and Q B 6

White to play and mate in three moves.



DO YOU WANT TO BUY A FARM

SEE THE LIST OF FARMS FOR SALE IN THE WEEKLY MAIL.

Parties Wishing to Sell Advertise There. Parties Wishing to Buy, Read There.

Advertisements of Farms for sale are inserted in the WEEKLY MAIL, 20 words for 50c each insertion; each additional word 2c.

Address MAIL, TORONTO.

18-1-3-375

JOHN MCARTHUR & SON, OIL, LEAD, PAINT, COLOR & VARNISH MERCHANTS

IMPORTERS OF English and Belgian Window Glass, Rolled, Rough and Polished Plate Glass, Colored, Plain and Stained Enamelled Sheet Glass.

PAINTERS' & ARTISTS' MATERIALS, RUSHES CHEMICALS, DYE, STUFFS, NAVAL STORES, &c.

310, 312, 314 & 316 ST. PAUL ST., AND 253, 255 & 257 COMMISSIONERS ST. MONTREAL.

CARRATRACA MINERAL WATER.

We are now receiving daily supplies of the above well-known, invaluable Water direct from the Springs at PLANTAGENET, ONTARIO.

For sale, in quantities to suit all. P. B. WINNING, SON & CO., 393 St. Paul Street.

P. S.—The only fault with Carratraca Water (in Canada) is that it is "Canadian," but, notwithstanding that melancholy fact, it is superior to, and more certain for all purposes for which it is recommended, than any other Mineral Water known.

WANTED Men and Women in every Dominion town to work for the family paper, The Contributor. 15 departments; 64 columns. Royal Art Premium, Cole's Voyage of Life (plates alone cost \$12,000). Goes everywhere. The Contributor, Boston, Mass.

HATS! NOBBY STYLES, constantly on hand and receiving from best English and American Houses. JOB C. THOMPSON & CO., 17-17-13-348 416 NOTRE DAME STREET.

AGENTS WANTED, male or female, to sell the Greatest Sensation of the Age. \$5 per day. Outfit 10 c. Address A. W. KINNEY, Yarmouth, N.S.

25 Styles of Cards, 10c., or 10 Chromo Cards 25c., with name; Outfit, 10c. J. B. Husted, Nasseau, N. Y.

JUST PUBLISHED CHISHOLM'S ALL-ROUND ROUTE AND PANORAMIC GUIDE OF THE ST. LAWRENCE.

With corrections to date. It contains full descriptions of the points of interest on the "All Round Route," including Hudson River, Trenton and Niagara Falls, Toronto, Ottawa, Montreal, Quebec, Saguenay River, White Mountains, Portland, Boston, New York. It is profusely illustrated, and is furnished with maps of the Route, and a fine panoramic view of the St. Lawrence River. For sale by booksellers and news agents. Sent post-paid to any address on receipt of the price, 50 cts.

C. R. CHISHOLM & BROS., 4 26-52-374 179 Bonaventure street, Montreal.

SUMMER COMPLAINT, WEAK BACK, RHEUMATISM and SEXUAL EXHAUSTION, immediately relieved and permanently cured by using IMPROVED GALVANO-ELECTRIC BELTS. Circular free. A. NORMAN, 16-25-46 4 Queen Street, Toronto.

E. N. FRESHMAN & BROS., Advertising Agents,

186 W. Fourth St., CINCINNATI, O.

Are authorized to receive advertisements for this paper. Estimates furnished free upon application. Send two stamps for our Advertisers' Manual.

25 Elegant Mixed Cards & Name, 15c. No Amateur or Yankee trash. Agents' outfit, 10c. Catalogue and sample, 3c. 8 Chromos, 10c. All post paid. NATIONAL CARD HOUSE, Ingersoll, Ont. 17-15-13-365

J. K. MACDONALD, BLACKSMITH, BELL HANGER, LOCK SMITH &c., 24 Latour Street, Montreal. REPAIRS PROMPTLY ATTENDED TO. 17-20-52-354

DR. WILLIAM GRAY'S SPECIFIC MEDICINE.

The Great English Remedy will promptly and radically cure any and every case of Nervous Debility and Weakness, result of indiscretions, excesses or overwork of the brain and nervous system; is perfectly harmless, acts like magic, and has been extensively used for over thirty years after taking, with great success. Price: \$1 per package, or six packages for \$5, by mail free of postage. Full particulars in our pamphlet, which we desire to send free by mail to every one. Address: W. M. GRAY & CO., WINDSOR, ONTARIO, CANADA.

Sold in Montreal by all Druggists, and by all Druggists in Canada. 16-7-52-284

\$10 to \$1000 invested in Wall St. Stock makes fortunes every month. Book sent free explaining everything. Address BAXTER & CO., Bankers, 17 Wall St., N. Y.

In consequence of spurious imitations of LEA AND PERRINS' SAUCE, which are calculated to deceive the Public, Lea and Perrins have adopted A NEW LABEL, bearing their Signature, thus,

Lea & Perrins

which is placed on every bottle of WORCESTERSHIRE SAUCE, and without which none is genuine. Ask for LEA & PERRINS' Sauce, and see Name on Wrapper, Label, Bottle and Stopper. Wholesale and for Export by the Proprietors, Worcester; Croase and Blackwell, London, &c., &c.; and by Grocers and Oilmen throughout the World.

To be obtained of MESSRS. J. M. DOUGLASS & CO., MONTREAL; MESSRS. URQUHART & CO., MONTREAL. 16-19-52-30

NOTICE TO THE PUBLIC!

The Engraving, Die Sinking, Lithographing, Printing and Publishing Business heretofore carried on at No. 115 St. Francois Xavier Street, by the late firm of BURLAND, LAFRICAIN & CO., and a 319 St. Antoine Street, by GEO. E. DESBARATS, being merged into the

BURLAND-DESBARATS LITHOGRAPHIC COMPANY,

has been REMOVED to those substantial, commodious and spacious premises, erected for the Company at 3, 5, 7, 9 & 11 BLEURY STREET, NEAR CRAIG, MONTREAL.

The double facilities acquired by the fusion of the two firms, the conveniences provided by the removal, and the economy and efficiency introduced by the united management, enable THE BURLAND-DESBARATS LITHOGRAPHIC COMPANY to execute orders for every kind of

ENGRAVING, LITHOGRAPHING, TYPE PRINTING & ELECTROTYPING, AT SHORT NOTICE, IN THE BEST STYLE, AND AT LOWEST PRICES. Our friends and the public are invited to leave their orders for every description of ENGRAVING, DIE-SINKING, LITHOGRAPHING, TYPE PRINTING, EMBOSING, PLAIN, GOLD, & COLOUR PRINTING, ELECTROTYPING, STEREOTYPING, &c. &c.

At the Office, Bleury Street. PHOTO-LITHOGRAPHY A SPECIALITY.

To this branch the attention of ENGINEERS, SURVEYORS, ARCHITECTS, &c., is particularly requested, the Company being prepared to reproduce MAPS, PLANS, and DRAWINGS, in an incredibly short space of time and at a trifling cost. ENGRAVINGS, BOOKS, ILLUSTRATIONS, &c., &c., reproduced same size or reduced to any scale. ILLUSTRATED CATALOGUES for manufacturers done by this process at very cheap rates.

REMEMBER THE ADDRESS: THE BURLAND-DESBARATS LITHOGRAPHIC COMPANY, 5 and 7 BLEURY STREET, MONTREAL.