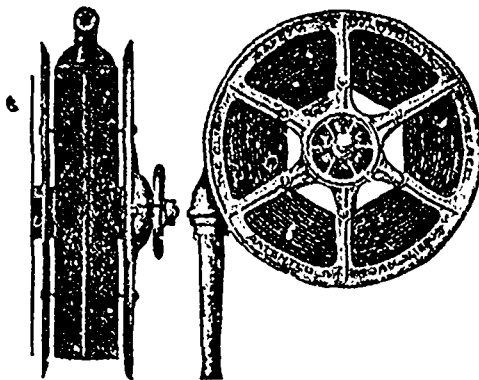


the departmental store of W. A. Murray & Co. on King street.—J. F. Brown, architect, Board of Trade Building, is this week taking tenders for erection of a residence on South Drive, Rosedale. He is also preparing plans for a large hotel in Huntsville, for a factory for Firstbrook Bros., of this city, to be 80 feet wide and 300 feet long, and for residences on Berkeley avenue, Wheeler avenue, Dovercourt road and Avenue road.—Building permits have been granted as follows: Wind Engine & Pump Co., three-storey brick factory, Atlantic avenue, cost \$6,000; Thomas McIlwain, pair semi-detached brick dwellings, 39 and 41 Concord avenue, cost \$5,000; Isaac Ritchie, two-storey brick dwelling, 284 Macpherson avenue, cost \$1,750; Dr. Trotter, three attached two-storey and attic brick dwellings, east side Concord avenue, near Dewson street, cost \$2,700; J. R. Wells, two-storey r. c. bk. front and basement, Pape avenue, cost \$1,000 (J. F. Bird,

architect); Wm. Prowse, two and two-storey and attic bk. dwellings, 602-4 Huron street, cost \$7,000 (Symons & Rae, architects; Wm. Prowse, builder);

W. R. Membry, bk. addition to store, s. e. corner Simcoe and Front streets, cost \$5,000 (G. M. Miller & Co., architects; Thomson Bros., builders).

## CLIFF SAFETY AUTOMATIC REEL



Unreeling hose opens valve; water received in ten seconds. For Public Buildings and Warehouses, standard of the U. S. Government.

**F. E. CAME, MFR.**

17 Place d'Armes Hill,  
MONTREAL.

## CEMENT—

**SAYLOR'S PORTLAND.**

Best Imported.

For Side-Walks  
and Bridge Work.

Write to

**JOHN MANN & SONS,**

WESTERN AGENTS.

LONDON, CANADA

## M. BEATTY & SONS

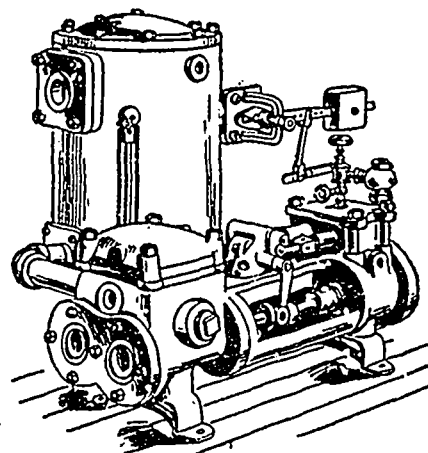
WELLAND, ONT.

**Dredges, Ditchers, Derricks and  
Steam Shovels**

of various Styles and sizes to suit  
any work.

Submarine Rock Drilling Machinery, Hoisting Engines, Suspension Cableways, Horse-Power Hoisters, Gang Stone Saws, Centrifugal Pumps for Water, Sand and Gold Mining, and other Contractors' Plant.

## THE NORTHEY AUTOMATIC FEED PUMP AND RECEIVER



The most successful device in the market for returning water of condensation from pipes and coils of steam-heating systems at the highest possible temperature to the boilers. By keeping the pipes clear for the steam it ensures a quickly operated, noiseless, regular heating service. Takes up little room. A favorite with prominent Engineers and Architects.

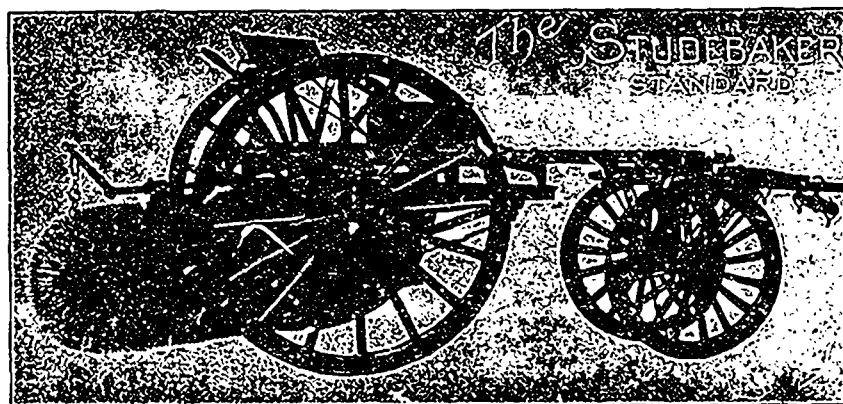
Send for New Free Pump Catalogue, containing designs of Pumps for every conceivable duty. Should be in the hands of every Architect and Engineer.

**The Northey Co.**

Limited

TORONTO

1015 King Street, Subway.

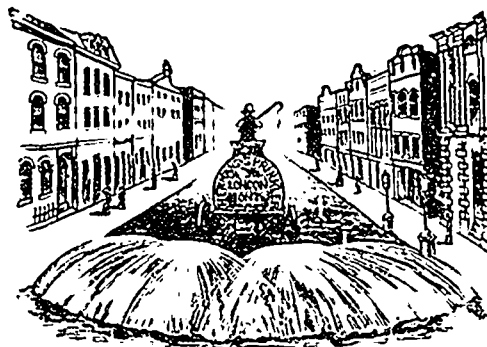


Stackpole  
Patent Improved.

## Street Sweeping Machine

Is 'the Standard  
of Perfection.

Because no sweeper so efficiently does the work for which it is designed as "The Studebaker." It Sweeps Clean. No sweeper is constructed with the same degree of care and mechanical precision. It Wears Well. "The Studebaker" has the smallest possible number of working parts, and has less gearing than any other sweeper made. It is free from unnecessary complications. With reasonable care it will not get out of order. Send for complete descriptive catalogue.



## Studebaker Sprinkler

(PATENT IMPROVED.)

Does not clog or get out of order. Greatest width of spray  
Can be graded from driver's seat to any volume.

We also make an . . .

**IMPROVED VERTICAL SPRAY**

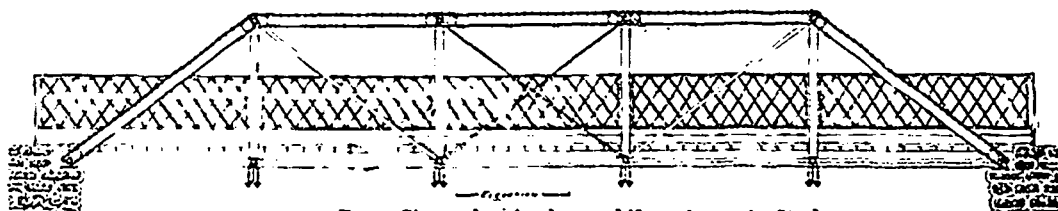
. . . for Pavement

**Geo. Heaman, Mfr., London, Ont.**

## THE HAMILTON BRIDGE WORKS CO., LIMITED, HAMILTON, CANADA

Manufacturers of

## STEEL RAILWAY AND HIGHWAY BRIDGES



Angles and Tees always in Stock

**Steel Roofs  
and Every Description of  
Steel Lattice  
and Girder Work**

Estimates furnished  
on application.