

**Black Watch**  
 Black Plug  
 The Chewing Tobacco  
 of Quality.

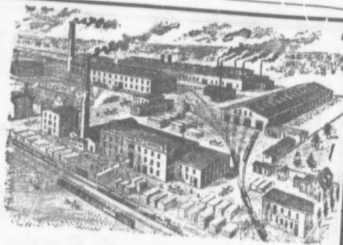


**"FENERTY" SHOVELS**  
 -FOR-  
 Miners, Contractors and  
 Heavy Work,  
**"GILMOUR" SHOVELS**  
 -FOR-  
 General Purposes,  
 MANUFACTURED BY  
**The HALIFAX SHOVEL CO**  
 HALIFAX, N. S.  
 ALL GOODS GUARANTEED.  
 SPECIAL SIZES and SHAPES MADE TO ORDER

*Genuine Garlock Packings*  
**FOR ALL PURPOSES.**  
**Pipe and Boiler Coverings,**  
**ENGINEERS SUPPLIES.**

also  
**"Tauril" High Pressure Jointing**  
 'the Best Sheet Packing yet  
 Produced.  
**THE GARLOCK PACKING CO.**  
 HAMILTON, ONTARIO.

Used by Collieries in Lancashire, Staffordshire  
 & Yorkshire  
**XTERRA'** COLLETRY LAMP OIL.  
 For Marsani, Muscels Deflector or Closed Lamp  
**PURE WHITE FLAME** LOW PRICE  
**E. WOLASTON, Dutton St MANCHESTER**  
 Sole Representatives for Canada, **AUSTEN BROS.,**  
 Halifax, N. S.



MANUFACTURERS OF—  
**RAILWAY STREET and MINING CARS,**  
 CAR WHEELS Church Pews,  
 FORGINGS & Fittings for Stores, Schools, &c  
 CASTINGS A SPECIALTY  
 Large Stocks of Foreign and Domestic Lumber on Sale.  
**Rhodes, BUILDING MATERIALS**  
**Curry & Co., Ltd. GENERAL**  
 Branch ROBBIE STREET, HALIFAX, N. S. AMHERST, N. S.

**INTERCOLONIAL RAILWAY**

On and after SUNDAY, OCT 11th 1908 trains run daily, Sunday excepted, as follows:—

—TRAINS LEAVE STELLARTON—

No 144 Mixed for Hopewell	5.55
No 79 Mixed for Trenton	6.30
78 Mixed for Hopewell	7.00
18 Express for Halifax and St. John	7.30
21 Mixed for Pictou Landing	7.40
62 Mixed for Pictou	7.45
45 Mixed for Mulgrave	8.30
19 Express for Ryln Y	8.30
26 Mixed for Pictou	11.15
26 Mixed for Truro	11.45
120 Mixed for New Glasgow	12.15
88 Express for the Synops	12.15
88 Express for Halifax and Montreal	12.50
140 Mixed for Pictou	13.15
101 Mixed for Pictou Landing	13.20
22 Mixed for Elswell	16.45
65 Mixed for New Glasgow	16.45
86 Express for Halifax and St. John	19.50
17 Express for New Glasgow	19.50
66 Express for Pictou	21.50
	21.55

—TRAINS ARRIVE AT STELLARTON

79 Mixed from Trenton	6.30
61 Express from Pictou	7.00
18 Express from New Glasgow	7.30
21 Mixed from Hopewell	7.35
45 Mixed from Truro	7.55
65 Mixed from New Glasgow	8.00
27 Mixed from Pictou	10.45
26 Mixed from Mulgrave	10.45
19 Express from Halifax and St. John	12.55
120 Mixed from Pictou	12.55
88 Express from Halifax and St. John	13.20
20 Express from Sydney	14.40
22 Mixed from Pictou Landing	16.43
17 Mixed from Hopewell	16.45
65 Mixed from Pictou	18.45
86 Express from the Synops	19.25
86 Express from New Glasgow	19.25
47 Express from St. John and Halifax	21.40

All trains are run by Atlantic Standard Time. Please see  
 O'clock to midnight, Moncton, N. S. Oct. 11th, 1908.  
 Sleeping and Parlor Cars between Halifax and Sydney.  
 Dining cars on No. 84 and 86 trains between Halifax and  
 Mulgrave. On Nov. 20 and 22 trains between Mulgrave and  
 Fresh River.