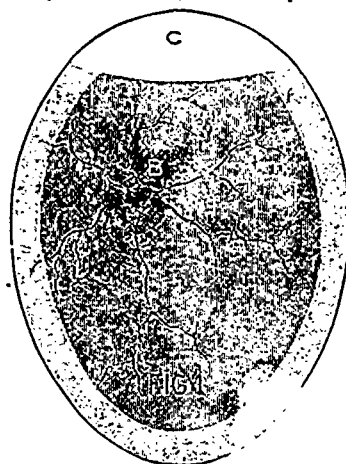


## TESTING EGGS.

**W**E are indebted to the Von Culin Incubator Co. for the engravings illustrating this article taken from their neat little booklet called "Incubation."

While the majority of persons who have good incubators make good hatches, there are some who would make decidedly better ones if they would just post up a little on a few important points which are easily learned by practice of simple and inexpensive experiments.



A Strong Fertile Egg on the 6th day as seen with the Von Culin Egg Tester.

Few persons understand testing eggs properly. Some have a very imperfect tester; some are unable to detect the fertile eggs closely—they cannot distinguish a dead germ from a live one, nor a weak from a strong one.

All eggs should be tested on the fifth or sixth day; at this time a clear or unfertile egg should be seen.

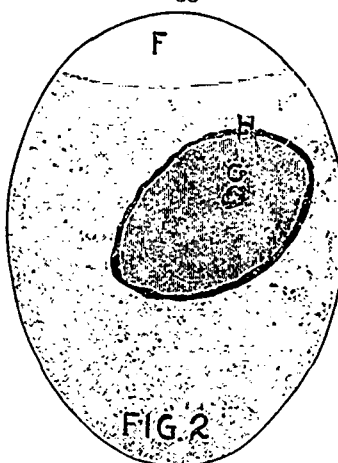
By the use of a good egg tester and the engravings here, any person can, with a little practice, test eggs rapidly and accurately; the engravings show how the eggs look in the tester.

To become an adept at testing eggs for fertility, one has only to use a good tester, his eyes and a little judgment. Break in separate saucers (carefully) one which you suppose to be a good, strong, fertile egg; one which seems to be fertile, but weak; one that is doubtful—that is, one which you cannot decide whether it is fertile or unfertile, and one that seems decidedly unfertile. Break one at a time, and examine it carefully, making note of it. This should be done on the fifth day, or at the first test.

A strong, fertile egg will, on the fifth day, (temperature having been kept at 102°, 103° or 104°) show a dark spot which will float and show veins running from it, looking somewhat like a spider; a weaker one will show a spot but is cloudy looking and muddled. The above are supposed to be fertile. Those which look clear are *unfertile*. Do not mistake the yolk for the germ or chick. All unfertile eggs are not perfectly clear. By breaking a few tested

eggs and studying their contents, carrying in your mind's eye (so to speak) the appearance presented through the shell prior to the breaking; having broken an egg, say of the strong fertile ones, select another from the unbroken eggs, and see how it compares with the former. Then having opened a fertile but weak egg select another from the unbroken ones and see how well you can match the germ before you. Then break a few apparently clear and unfertile ones, and you will be surprised to find some fertile eggs among them if your tester is inferior, or you are careless. You will also be surprised to find how easy it is to train the eye to detect and classify minute things by a little systematic practice.

There is decided economy in this egg-breaking business, for it will save eggs and chicks in the end.



An Egg to be Discarded on the 5th or 6th day, a weak or imperfectly Fertilized Egg that will never hatch.

Do not blame the sitting hen or the incubator, unless you *know* that your eggs are *fresh as well as fertile*. I would not have eggs for hatching that are over eight days old at any price—I would not use them if given to me. I prefer them not over five days old, and would like them still better at or under two days old.

It is not hard to remember that *fresh eggs from healthy hens, fertilized by vigorous cocks, MUST be used* if we are to hatch a large

percentage of strong, healthy chickens.

Fig. 1 shows a strong fertile egg as seen in the tester on the fifth or sixth day, B, the dark spot, is the live germ; AA are the blood vessels extending out from it. This germ B, is seen by placing the egg against the aperture of the tester, and revolving it between the thumb and finger until the side on which the germ has formed comes nearest the eye. The spot B, will be seen plainly, often surrounded by a small cloud, as shown; the germ at this time is quite lively, and can be seen to move up and down. This is a strong, fertile egg, and should hatch under a good hen or in a good incubator. In a well fertilized egg the blood vessels should show plainly, but the germ is not always seen as plainly, varying with the color and thickness of the shell and the power of the tester used. C, shows about the average air bulb in an egg on the fifth or sixth day of incubation,