

mate total of 40,000 tons, and 3 more ships are under construction.

We are advised that the company expects to launch the s.s. Canadian Navigator, Marine Department contract 23; builder's yard no. 73, approximately 4,300 tons d.w. about Sept. 13.

Collingwood Shipbuilding Co., Kingston, Ont., which has a contract for one steel cargo steamship, Canadian Beaver, approximately 3,750 tons d.w., from the Marine Department, for Canadian Government Merchant Marine Ltd., advised us Aug. 5 that the ship will probably be launched late in September or early in October, but that this will depend largely on deliveries of material.

J. Coughlan & Sons, Vancouver, B.C., laid the keel of the s.s. Canadian Inventor, approximately 8,100 tons d.w., for Canadian Government Merchant Marine Ltd., Marine Department contract 36; builder's yard no. 13, on July 24. The keels for the s.s. Canadian Importer and the s.s. Canadian Exporter, each also approximately 8,100 tons d.w., were laid Apr. 26 and May 3, respectively, as stated previously in Canadian Railway and Marine World.

Davie Shipbuilding & Repairing Co., Lauzon, Que., which has contracts from the Marine Department for 2 steel cargo steamships, Canadian Trapper and Can-

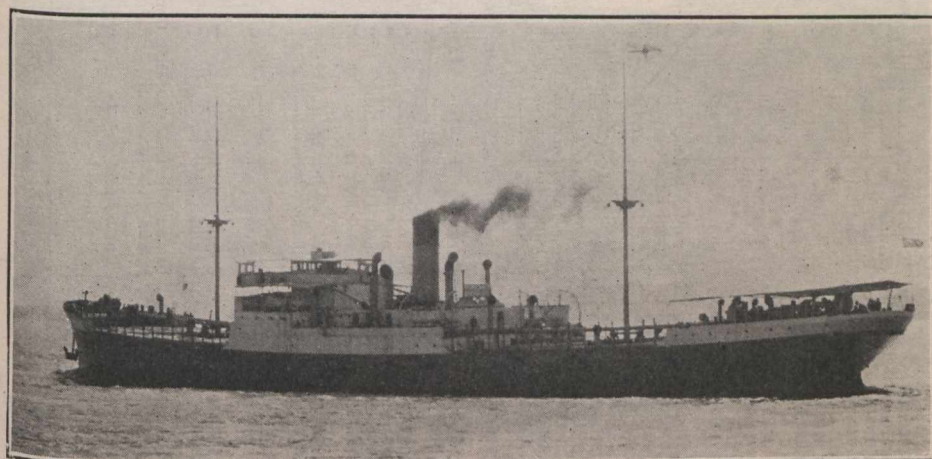
no. 1, was laid July 14, and we have since been advised that the keel for Marine Department contract 30; builder's yard no. 2, was laid Aug.

Port Arthur Shipbuilding Co., Port Arthur, Ont., delivered the steel cargo steamship Canadian Sailor, Marine Department contract 20; builder's yard no. 40; 3,357 tons d.w., to the Marine Department, Aug. 6. She was transferred immediately to Canadian Government Merchant Marine, Ltd., and left Aug. 7, at noon, for Montreal, with grain.

The company expects to launch two other vessels as follows: s.s. Canadian Adventurer, Marine Department contract 19a; builder's yard no. 41, approximately 3,400 tons d.w., about Sept. 1, and s.s. Canadian Sower, Marine Department contract 20a; builder's yard no. 42, approximately 3,400 tons d.w., about Sept. 15. Keels for 2 steel cargo steamships, Marine Department contracts 32 and 33; builder's yard numbers 43 and 44, each approximately 4,300 tons d.w., were to be laid Aug. 21 and 22. It was the intention to deliver these two ships this year, but the programme has been changed.

Prince Rupert Dry Dock and Engineering Co., Prince Rupert, B.C.—A Vancouver press report of Aug. 7, stated that keels for the 2 steel cargo steamships of approximately 8,100 tons d.w. each for

150 gross; 97 net; 188 tons d.w. capacity on 7 ft. draft. She is rigged for sailing as a fore and aft schooner, and the auxiliary equipment includes a 4 h.p. motor, driving screw.



Steel Cargo Steamship, Canadian Ranger, 8,382 tons d.w., built for Canadian Government Merchant Marine Ltd., by Canadian Vickers Ltd., Montreal, on her maiden trip down the St. Lawrence, en route to Liverpool, Eng.

adian Hunter, each approximately 5,100 tons d.w., advised us Aug. 5 that it expected to launch them by the latter end of September.

Dominion Shipbuilding Co., Toronto, is reported to have been assured by the Marine Department of an order for 2 steel cargo steamships for Canadian Government Merchant Marine Ltd., of approximately 3,550 tons d.w., each, single deck type, improved Cunard to Lloyd's classification, speed, 11 knots, approximate delivery dates May and June, 1920.

Harbour Marine Co. Ltd., Victoria, B.C.—The Marine Department's contracts 29 and 30, for 2 steel cargo steamships of approximately 8,100 tons d.w. each, were let to Victoria Machinery Depot Co., Victoria, B.C., which name has appeared in our full page table, "Orders for steel cargo steamships for Canadian Government Merchant Marine Ltd." for several months past. As a subsidiary company, Harbour Marine Co. Ltd., has been formed to build the ships, its name has been substituted in our table for Victoria Machinery Depot Co. As stated in our last issue, the keel for Marine Department's contract 29, builder's yard

Canadian Government Merchant Marine Ltd., would be laid about the end of August, and that it was expected that both vessels would be completed and ready to hand over to the government by Feb. 1, 1920, construction on both vessels proceeding simultaneously. The report also stated that the price to be paid to the company, is the same as to other western concerns, viz:—\$188 a ton. Reference to the detailed table of government shipbuilding on another page of this issue, will show that the price paid for this type of vessel, to this and other Pacific coast firms, is \$198 a ton d.w.

C.P.R. Scholarships at McGill University—Only one candidate qualified at the recent McGill matriculation examinations for the five scholarships in the applied science faculty offered by the C.P.R., viz: Jacob Bloomfield, Montreal.

The Railways of Canals Department received tenders during August for the purchase of the motor schooner, Neophyte, as she lies at Port Nelson, Hudson Bay. She was built at Amsterdam, Holland, in 1903, and is of steel with the following dimensions, length 107 ft.; breadth, 10.7 ft.; depth, 6.2 ft.; tonnage,

Details of the Different Types of Steamships for Canadian Government Merchant Marine Ltd.

The following are comparative details of the six different types of steamship being built for Canadian Government Merchant Marine Ltd.:

	2,300 ton.	3,400 ton.	3,750 ton.	4,300 ton.	5,100 ton.	8,100 ton.	10,500 ton
Length, overall.....	280 ft.	260 ft.	260½ ft.	333 ft.	344 ft.	413 ft.	445 ft.
Length, bet. perpendiculars.....	270 ft.	251 ft.	251 ft.	320 ft.	331 ft.	400 ft.	430 ft.
Breadth, moulded.....	38 ft.	43½ ft.	43½ ft.	44 ft.	46½ ft.	52 ft.	56 ft.
Depth, moulded.....	20½ ft.	23 ft.	26 ft.	25 ft.	25½ ft.	31 ft.	38 ft.
Draft, loaded.....	17½ ft.	20 ft.	22 ft.	21 ft.	21 ft.	25 ft.	29 ft.
Type.....	S.d., p.b. & f.c's'le	S.d., p.b. & f.c's'le	Lake, s.d., p.b. & f.c's'le	S.d., p.b. & f.c's'le	S.d., p.b. & f.c's'le	2d., p.b. & f.c's'le	3d., p. & f.c's'le
Engines—Type.....	Tri-compound	Triple expansion	Triple expansion	Triple expansion	Triple expansion	Triple expansion	Triple expansion
Cylinders, diam.....	17½ x 28¾ x 47 ins.	20½ x 34 x 56 ins.	18 x 30 x 50 ins.	25 x 41 x 67 ins.	25 x 41 x 68 ins.	27 x 44 x 78 ins.	29½ x 50 x 80 ins.
Stroke.....	83 ins.	40 ins.	36 ins.	45 ins.	45 ins.	48 ins.	54 ins.
Ind. h.p.....	875	1,300	1,200	1,800	2,500	3,000	4,000
Boilers—Type.....	Single ended	Single ended	Single ended	Single ended	Single ended	Single ended	Single ended
No.....	2	2	2	2	3	3	4
Dia. and length.....	12¼ x 10¼ ft.	15 x 11 ft.	14 x 10¼ ft.	15½ x 11½ ft.	14 x 11½ ft.	15½ x 11½ ft.	15½ x 11¾ ft.
Working pressure.....	185 lbs.	190 lbs.	180 lbs.	180 lbs.	180 lbs.	180 lbs.	180 lbs.
Furnaces—No.....	2	6	6	6	9	9	11
Grate surface.....	80 sq. ft.	135 sq. ft.	100 sq. ft.	132 sq. ft.	156 sq. ft.	198 sq. ft.	273 sq. ft.
Heating surface.....	3,000 sq. ft.	4,670 sq. ft.	3,900 sq. ft.	5,162 sq. ft.	7,275 sq. ft.	7,743 sq. ft.	11 knots
Speed.....	8½ knots	9 knots	9 knots	11 knots	11 knots	11 knots	12 knots
Classification.....	Lloyd's	Lloyd's	Brit. Corp.	Lloyd's	Lloyd's	Lloyd's	Lloyd's