



Portland Cement

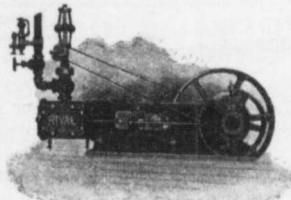
MONARCH BRAND

Highest quality—guaranteed to fulfill the requirements of specifications for Portland Cement approved of by the Canadian and American Societies of Civil Engineers.

Prompt shipments from mill or stock at Fort William and Port Arthur.

—The—

Lakefield Portland Cement Co., Limited
LAKEFIELD, ONT.



Rival Engines

Medium Price Medium Speed Medium Size

WRITE FOR CIRCULAR

Laurie Engine and Machine Co., Limited
MONTREAL, CANADA



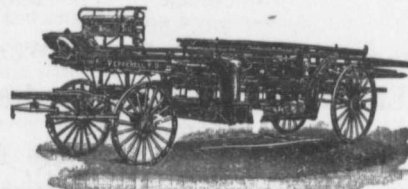
"Lehigh" Portland Cement

Capacity 20,000 Barrels per Day

The "Lehigh Portland Cement Company, Limited," are now also building a plant at Belleville, Ont., of 750,000 barrels annual capacity. Until this plant is completed all orders can be shipped from the United States. For prices, etc., address—

Thorn Cement Company

Buffalo, N. Y.
SOLE AGENTS FOR CANADA



Lightness, Strength and Economy

Seagrave Patent Trussed Ladders, Trussed Aerial, City Service and Village Hook and Ladder Trucks, Combination Hook and Ladder Trucks and Chemical Engines, Trussed Trucks, and Hand Pumps, Combination Hose Wagons and Chemical Engines, Hose Wagons, Combination Hook and Ladder Trucks and Hose Wagons, Chemical Engines, Fire Extinguishers, Hose Reels, Patrol Wagons, Ambulances, Specialty Wagons, Patent Sleigh Runners, and other Modern Fire Fighting Tools.

Prompt attention given to all enquiries. All goods built to order.

W. E. SEAGRAVE - WALKERVILLE, ONT.

LONG DISTANCE PHONES 685 and 684



PILE DRIVING

On land and water by steam.
Pile Drivers or Drop Hammers.

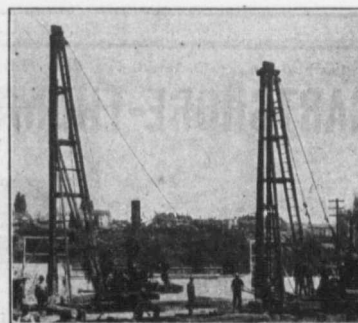
Dams, Wharves, Bridge Building, Trestle Work and General Contracting.

Submarine Diving and all kinds of Submarine Work.

We have always a stock of:—Diving Outfit, Portable Boilers, Hoisting and Pumping Machinery, etc.

WM. HOOD & SON, 10 RICHMOND SQ., MONTREAL

PILE DRIVING and Foundation Work



By 5-ton Automatic Steam Pile Hammers, Water Jet or Drop Hammers, Dock Building, Submarine work and Dredging.

Building Mover and Wrecker
GENERAL CONTRACTING

John E. Russell
Toronto

Residence, 1010 Queen St. E.—Phone M. 4606.
Office and Yard 307 Logan Ave.—Phone M 2007.