

pattern, which is No. 9142 and costs 1s. or 25 cents, is in eight sizes for ladies from thirty to forty-four inches, bust measure, and is shown in three views on page 660.

This cool-looking waist for Summer afternoons is here shown made of fine dotted Swiss and the pretty decoration consists of ribbon and ruches and frills of lace edging. A fitted lining of pink lawn is very effective but it may be omitted, if not desired. The fronts are arranged in soft, pretty folds by gathers at the neck, shoulder and lower edges, and there is becoming fulness in the lower part of the back drawn to the center by gathers. A belt finishes the waist under the stylish ribbon belt. A lace frill rises from the standing collar above a ribbon stock. The gathered two-seam sleeves are in three-quarter length, but they may reach to the wrists and have circular frills flaring over the hand, if preferred.

All of the sheer dimities, organdies, lawns, etc., are desirable for the waist and foulard or taffeta silk may also be used. Lace can be used for a jabot down the closing or in some other soft arrangement, and ribbon provides the belt and stock.

Lace, flowers and feathers combine to decorate the straw hat.

**LADIES' ETON JACKET, WITH SAILOR COLLAR. (To EXTEND TO THE WAIST OR NEARLY TO THE WAIST.)**

(For Illustrations see Page 648.)

No. 9170. — At figure No. 224 W in this magazine this jacket is shown differently made up.

The jacket is here pictured made of brown cloth and decorated with two widths of braid. It may reach to the waist or not quite to the waist, as shown in the illustrations. The fronts are apart all the way down and are separated from the broad, seamless back by under-arm gores which produce a

smooth, trim effect at the sides. A large sailor collar that is square at the back and has broad ends suggestive of revers is a dressy feature. The one-seam sleeves are of fashionable dimensions and gathered at the top, where they stand out stylishly.

This style of Eton jacket will be much in demand during the present season to wear over shirt-waists or vests, and may be made of material matching the skirt. Cloth, serge, cashmere and many washable materials like duck, piqué or linen will be made up by this mode. The decoration may be braid and in the absence of garniture machine-stitching will give a decorative finish.

We have pattern No. 9170 in seven sizes for ladies from thirty to forty-two inches, bust measure. For a lady of medium size, the jacket will require three yards and three-fourths of material twenty-seven inches wide. Price of pattern, 1s. or 25 cents.

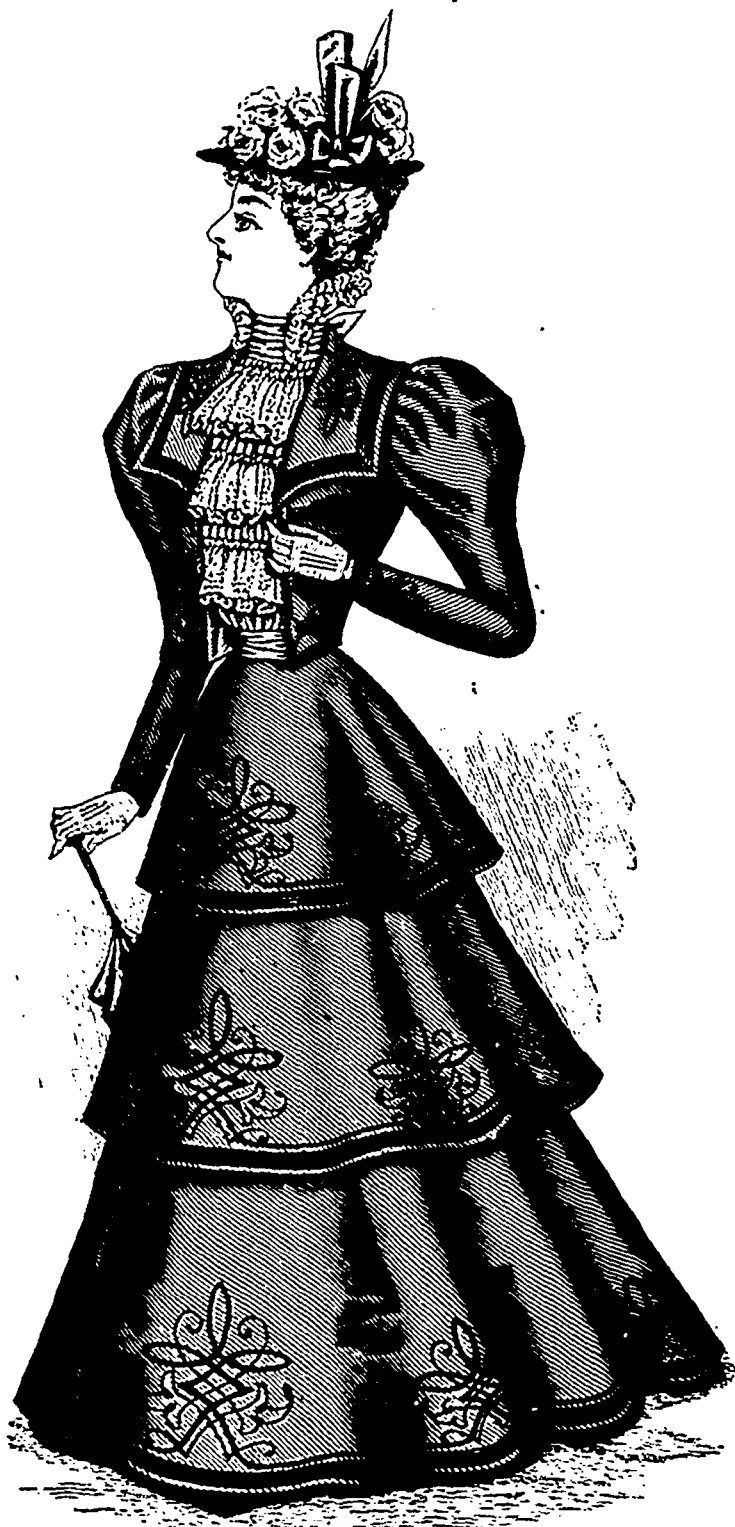
**FIGURE No. 227 W. — LADIES' PROMENADE TOILETTE.**

(For Illustration see Page 649.)

**FIGURE No. 227 W.** — This illustrates a Ladies' jacket-basque and skirt. The jacket-basque pattern, which is No. 9151 and costs 1s. 3d. or 30 cents, is in nine sizes for ladies from thirty-four to forty-six inches, bust measure, and is differently portrayed on page 652 of this number of THE DELINEATOR. The skirt pattern, which is No. 9077 and costs 1s. 3d. or 30 cents, is in nine sizes for ladies from twenty to thirty-six inches, waist measure.

This elegant toilette is pictured made of cloth in one of the new red shades subdued by black moiré silk, jet gimp, white lace

edging and an elaborate embroidery of black braid, the edging being arranged at the neck and wrists and in double jabot style down the closing of the full pointed vest nearly to the waist.



**FIGURE No. 224 W.** — This illustrates LADIES' STREET TOILETTE. — The patterns are Ladies' Eton Jacket No. 9170, price 1s. or 25 cents; Vest No. 1342, price 10d. or 20 cents; and Skirt No. 9166, price 1s. 6d. or 35 cents.

(For Description see Page 642.)