

WESTERN COUNTIES RAILWAY

The Only Line Through the Picturesque Western Section of Nova Scotia.



Connecting with Yarmouth S. S. Co. at Yarmouth, and Windsor and Annapolis Railway at Annapolis, for Weymouth, Digby, the Annapolis Valley, the Land of Evangeline, Halifax, Cape Breton, and all other points in the Province; and also for St. John, Boston, New York and all points in the United States and Canada.

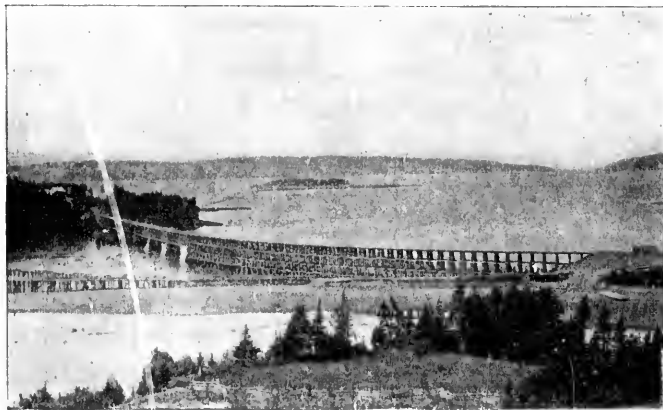


Stage connections are made at Yarmouth and Digby for local points. The Western Counties Railway forms the popular GATEWAY TO NOVA SCOTIA'S SUMMER RESORTS.

HEAD OFFICE AT YARMOUTH, N. S.

J. BRIGNELL, General Superintendent.

WM. FRASER, General Passenger Agent.



This Line is thoroughly equipped, and maintains fast and modern express trains throughout the entire summer season. Some of the finest scenery in the Province is found on the line of this road, including the BEAUTIFUL ANNAPOLIS BASIN, and tourists should not fail to travel this way.

