

the infective stage is very resistant to weather conditions and may live for many months on the pasture grass awaiting the coming of a sheep or lamb.

After being swallowed by the lamb or sheep the young Lung Worm reaches the intestine with the food, it then penetrates the wall of the organ and enters a blood vessel to be carried to the lungs where conditions for its development are favorable. It leaves the blood capillary in the lung tissue and enters an air sac and then the small air tubes. It grows to maturity in three or four weeks, moving meanwhile into the larger air tubes as its growth demands it.

Five or six weeks after the lamb has picked up the infective young Lung Worms, evidence of their presence will be noticed in the unthrift of the lamb. The adult life of the Lung Worm is believed to be over six months, as numerous worms are found on autopsy after the sheep have been off the land for five months.

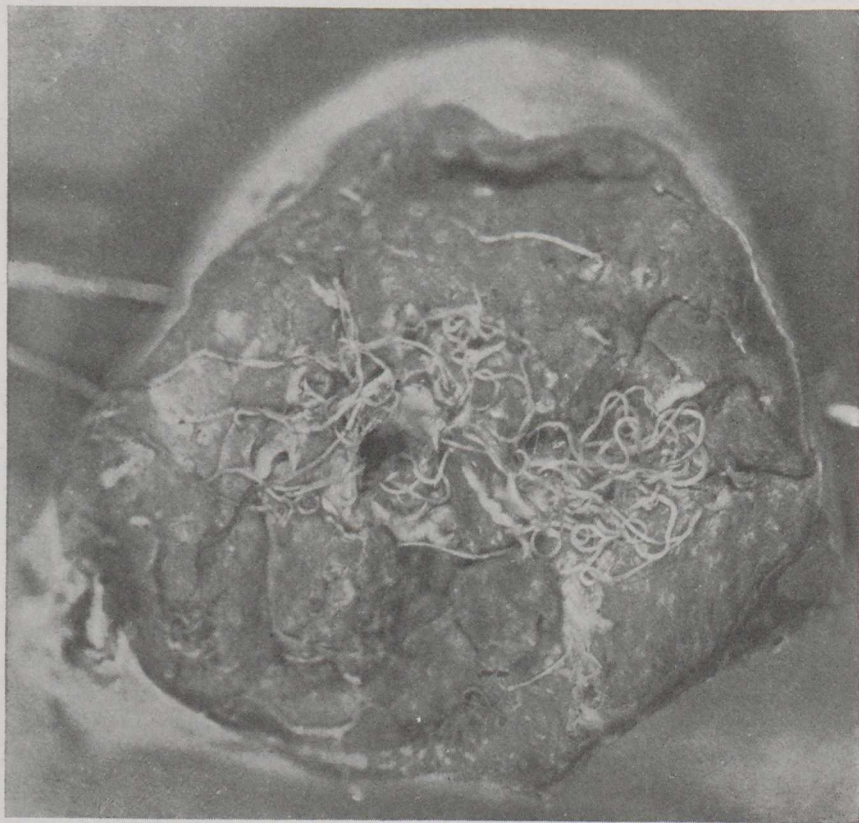


Figure 13.

*Lung Worms emerging from the air tubes in a freshly cut section of a sheep lung.*