

AUTOMOTIVE SECTION

BUY YOUR CAR NOW.

AUTOMOBILE POLO IS LATEST GAME

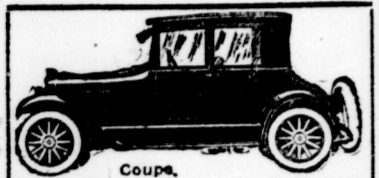
Army Men of Honolulu Prepare To Put On Match.

Yosemite National Park, Aug. 25.—The fame of Yosemite's automobile polo game, one of the thrilling events of the annual field days, has spread beyond the seas, and army men in Honolulu want to put on a match.

Auto polo is played in stripped "trovers," which can be manipulated in short compass. Automobile tires are laid in rows along the field with sufficient distance between each for a small car to turn if handled with dexterity. In the center of each tire is a stick, on which rests an inverted tin can, and the object of the game is for the mallet man of each automobile to knock off all the cans in the row of tires through which his partner wheels the car. The winning car is the one which finishes first.

WIRE HOLDS SCREWS.

A piece of soft wire will be of considerable help in replacing screws and other small parts where the fingers cannot reach. In case of a screw, for instance, wind the wire about the shank, place into position, screw in and when the work is started the wire can be pulled off with ease.



State chassis you have and type of body you wish—sedan, coupe, limousine, town car, touring, sport roadster, etc. Bodies built in exclusive design to your ideas if desired.

"You need a Closed Body for next Fall, Winter, and Spring driving, consequently place your order now, as we require about four months to make delivery."

Carriage Factories, Ltd.
Orillia, Canada.
We build Taxi Cab Bodies to order.



Couple Takes Home On 3-Year Auto Tour

FOR the next three years Mr. and Mrs. J. T. Kette will be visiting, small-like, every part of the continent.

Small-like, not in speed, but in the fact that their home will be moving with them.

The Kettes have built a comfortable bungalow on a small one-ton truck chassis and are already on the road. The traveling home provides all conveniences a young married couple would want.

The body, of wood with a sheet iron covering, has front and rear entrances. Windows on each side, with heavy curtains, provide light. A tank under the rear carries 25 gallons of water. Lockers on each side carry food. An icebox, in front, can be opened by the driver without stopping the car.

Five minutes' work converts the big compartment into a dining-room, kitchen, bedroom or living-room.

Sliding back a cover makes an oil stove ready for cooking and swings out two cabinets containing silverware, utensils and dishes. The meal prepared, a table for four people lifts up from the wall on the other side. To the rear, an inviting couch in daytime is made into a full-sized bed at night by releasing its spring holders.

A sewing machine can be swung out under the work-table when needed. A full-length mirror and drawers, combined with an ingenious clothes closet provide wardrobe facilities. A medicine chest on the wall can be converted into a writing desk by turning it around.

Carpet covers the floor, electricity lights the interior, and a canary is the final home-like touch.

The Kettes have already covered distance enough to tell the value of their modern ark.



Traveling Home of J. T. Kette. Belows Left, the "Kitchen Stove"; Right, same as buffet.

AUTO NOTES

Tighten wire connections often. Running on car tracks wears out the tires quickly.

Airplane system of oiling is being applied to the motor car.

United States leads the world in the export of automobiles.

Engine usually stalls if it is accelerated too quickly.

Keep your eye on the gasoline pump for full measure.

Airplane engines are being installed in automobiles.

Auxiliary cans of oil and gasoline come in handy at times.

Over-size tires give better comfort and longer service.

Tire side wall is thin and is designed chiefly to protect the fabric from weather.

Ford Owners—

WE will continue to give service on all FORD cars as heretofore; also we will maintain a full stock of "GENUINE" FORD REPAIR PARTS, and we solicit a continuance of your patronage, assuring you our constant endeavor will continue to be

"SUPER-FORD SERVICE."

Reliance Garage, Ltd.

DECLARE ODD TIRES NOT BECOMING TO MOTOR CARS

Motorists Believe Dress Regulations Should Apply to Autos As Well As Clothes.

There is correct dress of the motor car as well as for the person.

Full dress and tennis shoes! Imagine a man dressing with fastidious care, grooming himself carefully for an affair of public interest, and then appearing with his feet shod in canvas. An incongruous situation you will say, but its exact counterpart is often seen on the streets when a beautiful car, resplendent in its polish of body and shine of metal,

rolls along with nondescript, unmatched tires, variegated in shades as the hues in Joseph's coat. One front tire has a streamline tread, the other is not its twin. In the rear, a colored band encircles the side wall of one hieroglyphic tread, with its mate wearing a faded girdle contrasting sharply with its darker surface.

The careful motorist does realize the importance of combining harmony with utility in the tires he buys. His car and its tires form a perfect symphony, a blending of the entire scheme of dress which raises its value in the owner's eye, and in the appraisal of the bystander, not to say winning the covetous admiration of other motorists.

Water, oil, grease and light are the tire's worst enemies.

INFLUENCE OF WOMEN IS FACTOR IN MOTOR TRADE

Canadian Wives Seek Refinement in Automotive Vehicles Often Overlooked by Husbands.

No more important factor in the construction of motor cars in recent years has been brought so sharply before the manufacturers than the influence of women in the motor trade. The Canadian woman buys the automobiles for her husband today, just as she does other commodities. She has been educated up to the point of refinement in automotive vehicles, and surely the car that can be easily operated by a woman

is only more easily handled by the man. True, mechanical features enter largely into the sale of any vehicle, but a woman who does not know the reputation of a car for standing punishment over a period of years of service cannot be produced.

The greatest example of this fact, of course, is the development of the inclosed type of automobile with the luxurious interior sturdily mounted in a body on a serviceable chassis. But even in the open cars are noticeable fine points of design and construction that even more simplify the operation of cars.

World's oil resources are estimated by geological survey as 65,000,000,000 barrels.

Follow these Recommendations

How to read the Chart:

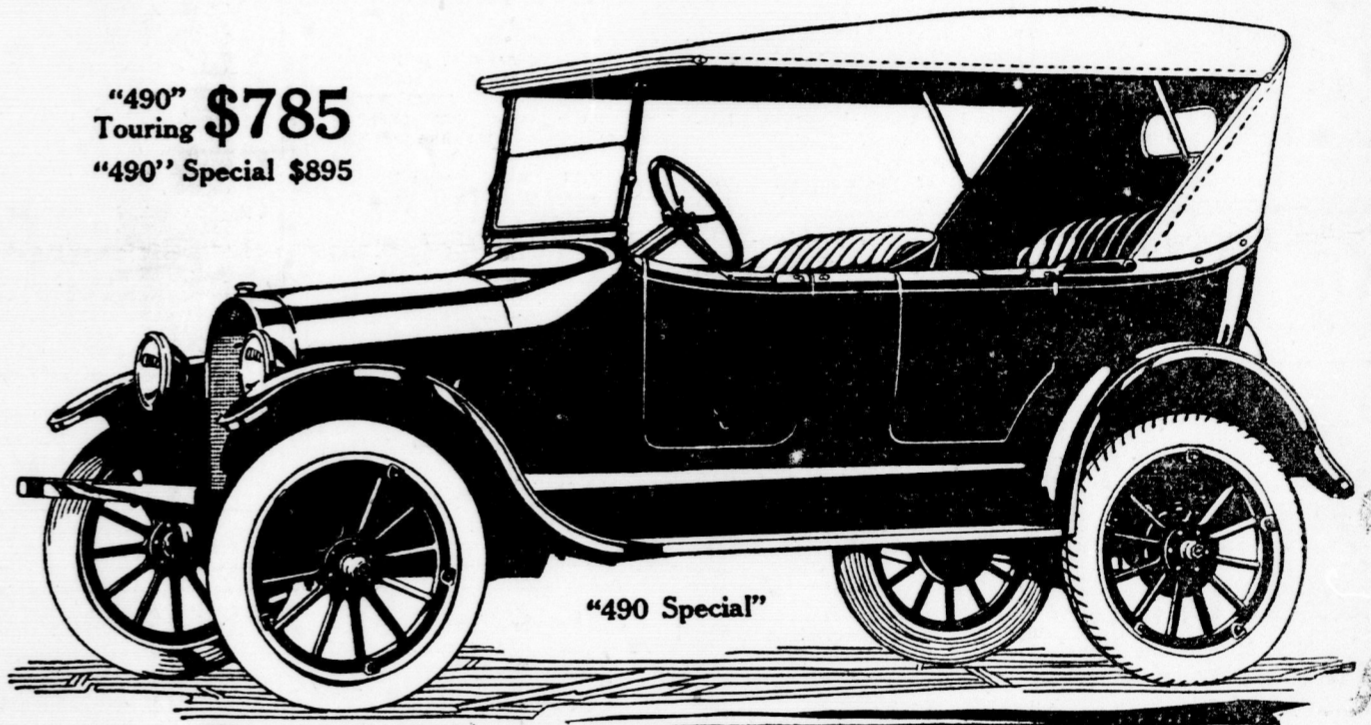
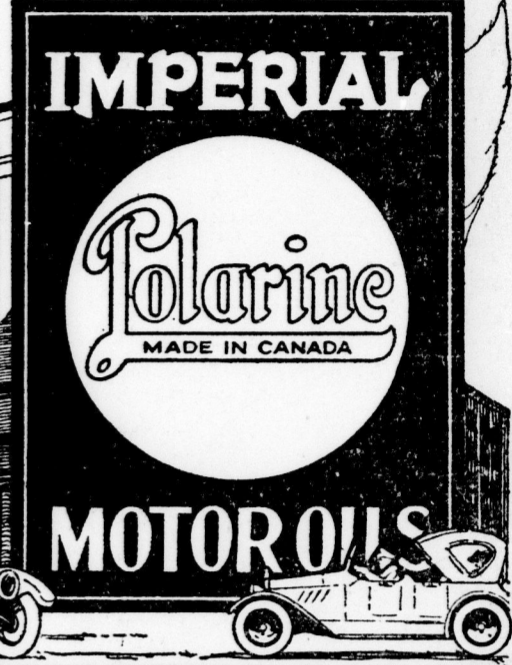
I.P.O. means Imperial Polarine Oil.
I.P.M. means Imperial Polarine Medium Oil.
I.P.H. means Imperial Polarine Heavy Oil.
I.P.T. means Imperial Polarine Transmission Oil.

MAKE OF AUTOMOBILE	Engine Lubricant		Transmission	Differential
	Summer	Winter		
Chevrolet (8 Cyl.)	I.P.H.	I.P.H.	I.P.T.	I.P.T.
Model 490	I.P.M.	I.P.M.	I.P.T.	I.P.T.
All other Models	I.P.H.	I.P.M.	I.P.T.	I.P.T.
Dodge Bros.	I.P.M.	I.P.M.	I.P.T.	I.P.T.
Ford	I.P.O.	I.P.O.	Oil Fed from Engine	I.P.T.
Gray Dort	I.P.H.	I.P.M.	I.P.T.	I.P.T.
McLaughlin (44-50)	I.P.M.	I.P.M.	I.P.T.	I.P.T.
All other Models	I.P.H.	I.P.H.	I.P.T.	I.P.T.
Overland	I.P.H.	I.P.M.	I.P.T.	I.P.T.

* If you drive another make of car consult the Imperial Chart of Recommendations to determine the grade of Imperial Polarine which you should be using.

Imperial Oil Limited

Manufacturers and Marketers of Imperial Polarine Motor Oils and Marketers in Canada of Gargyle Mobiloil.



"490" Touring \$785
"490" Special \$895

The Fastest Selling Complete Car

The Chevrolet is the most satisfactory low priced, fully equipped, most economically operated automobile in the world today.

This year's motor car buyers have recognized this fact to such an extent that 1922 has seen Chevrolet become the largest producer of high-grade automobiles in the world.

The Chevrolet has many improved features. It has a new front axle assembly, a new rear axle assembly including spiral ring and pinion gears.

The clutch has been improved. In addition to its service brake, a hand-lever emergency brake has been provided. The front and rear springs have been re-designed to give easier riding.

With such improvements the Chevrolet is indeed superior—superior in first price because no car of similar equipment and quality can be bought for less—superior in maintenance cost because it has the lowest cost of operation of any car built.

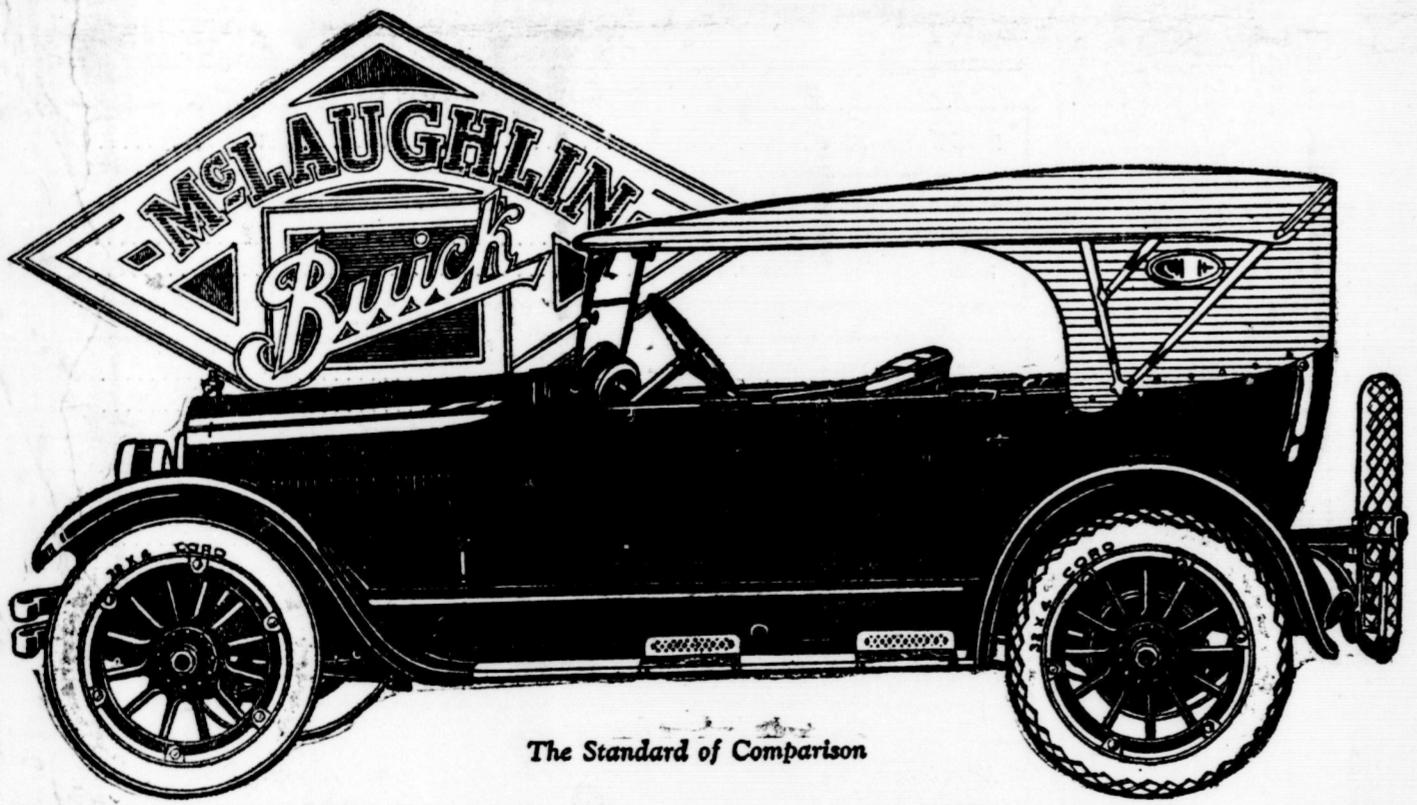
Chevrolet Invites Comparison Because Comparisons Sell Chevrolet

CHEVROLET MOTOR COMPANY OF CANADA, LIMITED
Subsidiary of General Motors of Canada, Limited
OSHAWA ONTARIO

CHEVROLET

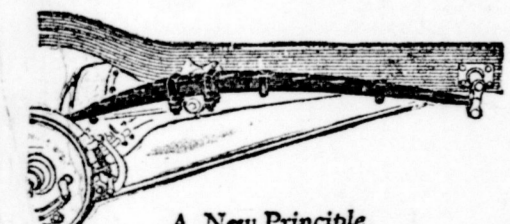
For Economical Transportation

THE CHEVROLET IS SOLD IN LONDON BY
ONTARIO GARAGE AND MOTOR SALES LIMITED.
S. H. ROWED, MANAGER.
"The Home of Satisfactory Service."
397-401 DUNDAS STREET
PHONES 5459-2431.



The Standard of Comparison

The Finest Model "45" McLaughlin-Buick Ever Built



A New Principle

The new McLaughlin-Buick six cylinder models are perhaps the easiest-riding cars of the day due to a distinctive development in cantilever spring construction.

The McLaughlin-Buick Line for 1923 comprises fifteen models:

- Master Fours:
 - 5 Pass. Regular Touring \$1235
 - 2 Pass. Special Roadster 1275
 - 5 Pass. Special Touring 1295
 - 3 Pass. Coupe 1645
 - 5 Pass. Sedan 1950
 - 5 Pass. Touring Sedan 1855
- Master Sixes:
 - 5 Pass. Touring Sedan \$2725
 - 2 Pass. Special Roadster 1695
 - 5 Pass. Special Touring 1725
 - 5 Pass. Sedan 2795
 - 4 Pass. Coupe 2675
 - 7 Pass. Special Touring 2095
 - 7 Pass. Sedan 3095
 - 3 Pass. Sport Roadster 2295
 - 4 Pass. Sport Touring 2375

The 1923 McLaughlin-Buick "45" Special has taken the country by storm. Always a favorite, this model reaches the highest pinnacle of value ever attained.

It is a beautiful car—it is luxurious—it is a mechanical masterpiece. Stand off and note the snappy lines, the higher hood, the new bumper, the full crown fenders, sturdy artillery wheels, drum type head and cowl lamps, the low top made of English burbank. Then sit in the car. Here is comfort equalled only in the costliest automobiles.

Look about you—the upholstery and trimming are of the finest quality, the instrument board is equipped with richly finished instruments, the control lever is at finger's end, the cowl ventilator control and windshield wiper are within easy reach.

And the chassis shows far-reaching improvements. Test the new rear cantilever springs—you will be amazed at the difference in riding comfort. Lock the handy transmission control and know that this feature, with others, gives McLaughlin-Buick a low rating by insurance underwriters. Even the famous McLaughlin-Buick Valve-in-Head motor shows important changes—higher cylinder block, larger connecting rods and pistons, larger crankshaft, with pressure feed to main bearings.

These are just a few of the sweeping improvements in the new McLaughlin-Buick "45" Special. From the newly designed radiator to the combination tail and stop lamp, the McLaughlin-Buick "45" Special is a new and finer car—more than ever the standard of comparison.

McLAUGHLIN MOTOR CAR CO., Limited, OSHAWA, ONT.
Subsidiary of General Motors of Canada, Limited M.317

BRANCH HOUSE—RICHMOND AND BATHURST STREETS.
Samples of the New 1923 McLaughlin-Buick Models Will Be Displayed at the Toronto, Ottawa, and London Exhibitions.

McLAUGHLIN-BUICK