

Send Now For Free Book and Sample

Learn about the strongest, most practical, most durable and easiest-laid culvert ever made—that's

"For more than five years I have been experimenting with our experts to find the BEST culvert for all-



round uses. We sought the markets of the world for one that was just right; and we didn't find it. If we had, we'd have bought the patent rights for Canada. Finally, last spring we struck the idea. Then we put in some expensive months in making that idea better, —and NOW we've got a culvert that is so far ahead of any other there's no comparison."

"You'll read something about it here; but to KNOW how 'way-ahead it really is, you'll want to see the sample (sent free) and read the booklet (free, ditto). With that before you, you will soon see why every Reeve, or Warden, or Town Councillor, or anybody who has any use for culverts at all,—will find it pays to get in touch with me right NOW. I am asking you to lay aside your notions of what makes a good culvert, and a cheap culvert, and find out about this NEW culvert. I don't expect you to buy a foot of it until it PROVES to you that Pedlar Culverts are in a class by themselves, and that you can't afford to overlook them. Let us start that proof toward you soon—address nearest Pedlar place."

G. A. Pedlar

Frost-Proof, Rust-Proof, and Wear-Proof

This triple-rib flange-lock principle, found only in Pedlar Culverts, not only adds greatly to the strength of the piping and makes a perfect joint—practically as good as if welded—but it also allows for expansion and contraction under cold or heat. Though a Pedlar Culvert, of any length, be frozen solid full of ice, it will not split nor spring a leak.

Send for Free Sample and Booklet 20—Address

State your probable needs and we will quote prices and discounts —



FURS AND SKINS

WATSON & CO., 49 Great Queen St., KINGSWAY, LONDON, ENGLAND.

Buyers of Furs and Skins of every description, in small or large parcels, or will receive for sale on commission. Prompt settlements and advances by mail or cable. Correspondence invited. Address bills of lading as above.

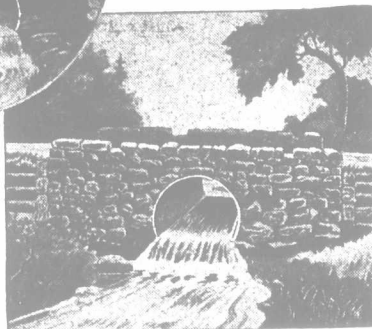
Well DRILLING & PROSPECTING MACHINE

Best drillers known Great money earner. DOMIS MACHINE CO., TIFFIN, OHIO.

Please Mention Farmer's Advocate.



A structure like this, with Pedlar Culvert, won't wash out nor need repairs.



PEDLAR Perfect Corrugated Galvanized CULVERT

A few hours' work and a few dollars will put a modern and permanent culvert in place of a ramshackle bridge. Easily laid by anybody.

Made of Special Billet Iron, Extra Heavy

In every size of Pedlar Culvert, which comes in all standard diameters from 8 inches to 6 feet, we use nothing but the best grade of Billet Iron, specially made for us, of extra-heavy gauge (14 to 20 gauge, according to the diameter). This Billet Iron is curved into semi-cylinders—curved COLD, so there will never be any variation from exact dimensions; and it is then deeply and smoothly corrugated on a special press that puts a pressure of SIXTY TONS on every square inch of the metal. The corrugations, therefore, are uniform and very deep.

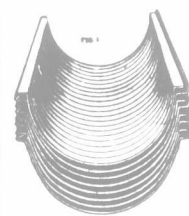
Galvanized After Being Pressed Up

When the corrugating process is done, the sections are galvanized by our exclusive process that covers the entire surface with a thick coating of zinc spelter. Every edge, every crevice, is heavily coated with this rust-proof, corrosion-proof galvanizing, not a spot is left unprotected. This is the only culvert galvanized after being shaped. Is absolutely Rust-proof.

Will Stand Incredible Strains

The heavy-gauge Pedlar Billet Iron sections, deeply corrugated and locked together without bolts or rivets by our compression triple-rib (this rib is flat—not corrugated), make a culvert that will stand enormous crushing strains and neither give nor spring. A thin cushion of soil on top is all the protection such a culvert needs against traffic; and no special precautions need be observed in laying it,—it will stand what no other culvert can.

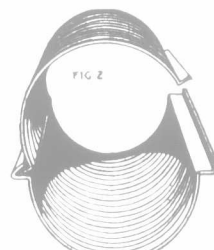
Compact—Portable Easily Laid



Half-sections nested for shipment

Note that the ribs are flat, and the curved part of the cylinder deeply corrugated. These ribs add vastly to the culverts' strength.

Pedlar Culverts are shipped in half-sections, nested—see Fig. 1. Saving freight charges and making carriage easy in roughest country. Quickly and easily transported anywhere.



Sections in course of assembling



Clinching the flange lock—no bolts, no rivets, no makeshifts

Unskilled labor, with a single tool, quickly clamps the flanges together, making a triple-fold joint that is tighter and better than any riveted or bolted joint can be.

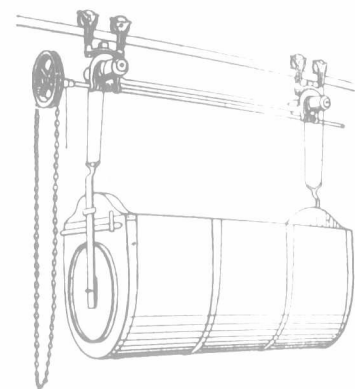
BRANCH WAREHOUSES

MONTREAL, 321-3 Craig St. W.
OTTAWA - - - 423 Sussex St.
TORONTO - - 11 Colborne St.
LONDON - - - 86 King St.
CHATHAM - 200 King St. W.

FLY KNOCKER

A sure and effective remedy against Flies and Mosquitoes. Is easily and quickly applied with any sprayer. Guaranteed the best preparation on the market. Protects animals effectually from the unendurable torments of FLIES and VERMIN. It is cheap. ONE GALLON applied properly will keep 25 COWS FLY FREE for 2 WEEKS. Cows yield ONE-THIRD MORE MILK when treated with FLY KNOCKER. PRICES: 50 cents quart. \$1.75 gallon. Freight paid.

Wm. Cooper & Nephews, 152 Bay St., Toronto, Ont.



Get a Beath LITTER CARRIER

With the Beath Litter and Load Carrier you can save many hours a week. It carries all kinds of litter, and dumps it just where you want it. It is a decided improvement on other styles. No dog or brake required—an endless chain raises the load. All parts subject to strain are made of malleable iron. For sureness in operation, simplicity of construction and all-round excellence the Beath cannot be excelled. Send for catalogue and learn more about it.

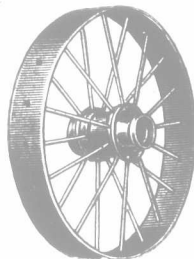
W. D. BEATH & SON, LIMITED.
Toronto, Ontario.

Agents wanted in unrepresented districts.

Just Write for this Catalogue

Don't imagine this is the ordinary dull-reading catalogue, for it isn't. It is very interesting, very practical, and contains information of real value to anyone interested in reducing his hours of loading-labor. It tells all about our Low, Wide-tire Steel Wheels. Tells about their lightness, strength and durability. Tells why they are so easy on horses. Tells about our strong guarantee. Our different styles of Handy Wagons are also displayed and described in detail. Don't you think it would be wise to have a copy of this catalogue by return mail?

Dominion Wrought Iron Wheel Co., Limited,
Orillia, Ontario.



POWDR PAINT

CAN BE USED IN WINTER ON MILD DAYS.

Aside from its low cost, Powder Paint endears itself to the farmer because the work of mixing and applying can be done BY SELF AND HIRED MAN at odd times without paying out a cent for extra help. And there are so many places where Powder Paint will be of the greatest possible worth that it will pay every farmer handsomely to look about and study its uses carefully.

In no other way can a few dollars be invested so profitably as in applying this remarkable weatherproof, fireproof and sanitary paint. The cost is only a trifle, but you will improve the appearance of your property many fold and actually add hundreds of dollars to its intrinsic value. Full information and catalogue mailed on request to

THE POWDR PAINT CO., Toronto.

GOES LIKE SIXTY SELLS LIKE SIXTY \$65
SELLS for
GILSON Gasoline ENGINE
For Pumping
Cream Separators, Churns, Wash Machines, etc. Free Trial to 25 Horse Power. Ask for Catalogue.

GILSON MFG. CO. 160 York St., Guelph, Ont.