

3 1/2%

interest is paid 1/4 yearly on deposits of \$1 or more

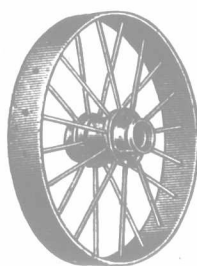
Established 36 years. Deposits secured by Assets of over **Two Millions**. Trustees and Executors, by order-in-council, have no responsibility when money is deposited with this Company.

Agricultural Savings and Loan Co.

109 DUNDAS ST., LONDON, ONTARIO

4%

interest is paid 1/4 yearly on Debentures of \$100 or more



Our Low Wide-tire Steel Wheels Halve Loading-labor

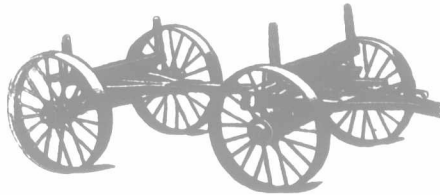
You can load a low-wheel wagon in half the time required to load a high-wheel affair. And there is no reaching-up or high-throwing to do with a wagon equipped with our Low Wide-tire Steel Wheels.

You can turn any wagon into a low one. Our wheels are made in any size, any width of tire, to fit any axle. Reliable in all kinds of weather, wet or dry, hot or cold. Can be readily taken apart and put together again. Sold under a guarantee that completely protects you. Send for catalogue.

Dominion Wrought Iron Wheel Co., Ltd., Orillia, Ont.

Low Handy Wagon

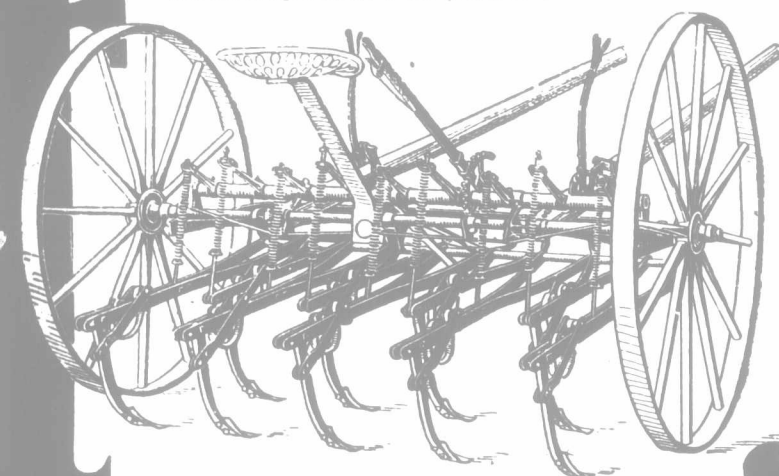
An immensely popular wagon is our "Queen City" Low Handy Wagon. Strongly constructed, excellently finished splendid appearance. Can be changed into platform wagon in three or four minutes. One man can do more work with "Queen City" than two men with high wagon. Complete particulars in free catalogue.



FROST & WOOD

GREAT GRASS AND WEED EXTERMINATOR

Weeds are robbers; they steal your time, carry off richness of the soil, strangle your growing crops, reduce your profits. Kill them or they'll overcome you. Increase your crops and take part of the worry out of your life with a **Climax Cultivator**. It will pull out Scotch grass, Thistles, and all deep-rooted weeds, and throw them on the top for you to rake up.



The Climax Cultivator

is a stiff-tooth cultivator. With the pressure and tilting levers any desired depth can be reached. Thus weeds can be cut off just below the surface or ripped out roots and all for burning. **The Climax** is strong, substantial, durable, well braced at every angle, and ready for many a season's hard tug and strain. The axle is a solid steel shaft. The drag bars and their braces are heavy and just right in shape. **The Climax** is easy to handle, levers being conveniently located. It is made in two styles: 9-tooth (very popular in Ontario and Eastern Canada), and 13-tooth (much demanded in the West). We have an agent in your locality who will gladly answer your questions and show you this money-saving, crop-increasing cultivator. Write us now for catalog F12 that describes this and our general line of farm implements. It's free.

THE FROST & WOOD CO., Ltd.
Smith's Falls, Canada

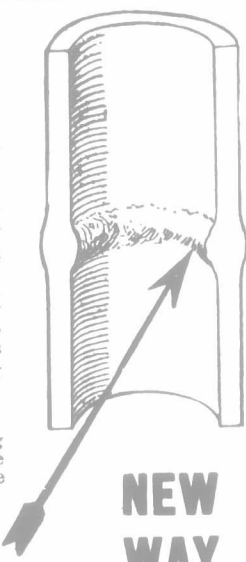
FROST Gates have the distinction of being the first made from steel tubing, and naturally their sale has been heavy. Of course they have been widely imitated, but that has only served to make them more popular.

Not being content with having "Frost" Gates imitated we have installed a modern galvanizing plant for coating the frames of all plain and fancy gates. Thus we are able to give them a more permanent and substantial finish than their imitations. The pipe is first put through a pickling process which removes all dirt, grease and scale, so that the galvanizing not only spreads all over the surface of the metal, but goes into it, filling up the pores and giving an even, smooth and exceptionally durable coating.

Furthermore, "Frost" Gates have the distinction of being the first in which the frame is not weakened by having the "thread" cut half way into the pipe in order to join it to the coupling. No "threaded" ends—no couplings—in "Frost" Gates. Instead the pipe sections are **WELDED** together, making the part that was heretofore the weakest now the thickest and heaviest. And by welding, the tubing is made continuous—the gates are free from unsightly couplings.

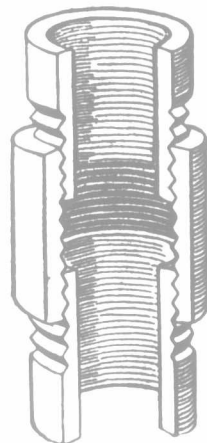
No extra charge is made for this wonderful welded-improvement or for the more handsome and permanent finish—another reason why you should buy "Frost" quality in preference to other goods costing the same.

When ordering, don't ask for a metal gate, but a "Frost" Galvanized Gate. There is a hustling dealer in your neighborhood who makes a business of supplying "Frost" Gates and building "Frost" Fences. It will pay you to get acquainted with him. If he is not known to you, write us.



NEW WAY

Pipe Sections
Welded Together



OLD WAY

Pipe Sections
Threaded into
Coupling.

FROST WIRE FENCE CO., LTD., HAMILTON, ONT.
MANITOBA FROST WIRE FENCE CO., LIMITED,
WINNIPEG, MANITOBA.

"Frost" Gates

ROOFING FACTS AND FIGURES IN OUR FREE BOOK



show why it will be money in your pocket to lay an ASBESTOS ROOF. The figures prove the economy of it. First, because ASBESTOS is the only *permanently durable* ready roofing. Second, because it is not made to be painted, coated or protected in any way. The Asbestor, being a mineral, is indestructible. Yet it costs no more per roll than some ordinary roofings, which cost more to keep painted or coated than they cost in the first place.

J-M ASBESTOS ROOFING

gives real fire protection, too. No other roofing made does this. Don't listen to "claims." Ask for the facts. Our facts prove our claims. Learn also why Asbestos Roofing keeps buildings warm in winter and cool in summer. Write to-day for Book No. 30 and samples. No matter what kind of roofing you want this book will help you choose wisely.

The Canadian
H. W. Johns-Manville Co., Ltd.
85-87 Wellington St., West,
Toronto, Ont.

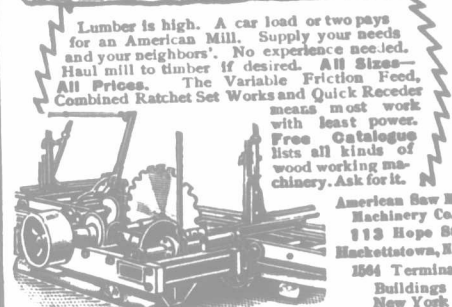
EUREKA Glass Tank Sprayer



Solution tank is a quart Crown glass jar. If broken, it can be easily replaced for a few cents. Solution tubes are brass. None of the liquid used can be drawn back into the pump chamber, thus the chamber and valves are uninjured. This is the easiest operated and the most effective small sprayer on the market. Inquire of your hardware dealer.

Write for our complete catalogue of Sprayers and Garden Tools.
THE EUREKA PLANTER CO. LIMITED
Woodstock - Ont. 6

Make With An American Money SAW MILL



Lumber is high. A car load or two pays for an American Mill. Supply your needs and your neighbors'. No experience needed. Haul mill to timber if desired. All Sizes—All Prices. The Variable Friction Feed, Combined Ratchet Set Works and Quick Recorder means most work with least power. Free Catalogue lists all kinds of wood working machinery. Ask for it.

American Saw Mill Machinery Co.
113 Hope St.
Hackettstown, N.J.
1504 Terminal
Buildings
New York

Champion Evaporator



Not a single feature of the **CHAMPION EVAPORATOR** could be dispensed with. The simplest and most economical way of making maple syrup. Produces the highest quality, which brings the most money. Made in 22 sizes for large and small groves. Give your maple business a show by using the **CHAMPION EVAPORATOR**, and our Improved Supplies. This will assure success. Send for descriptive catalogue.

THE GRIMM MFG. CO.,
58 WELLINGTON ST., MONTREAL.

HAVE YOU SECURED ONE OF "THE FARMER'S ADVOCATE" PREMIUMS