

**NOTES.**

The Peterboro Cement Roofing Company, Limited, have been registered by the Saskatchewan Government.

The St. Lawrence Presed Brick & Terra Cotta Company, Limited, of Montreal, and Lortie & Peachy, painters and carpenters, of St. Raymond, Que., have registered.

The high-pressure water system for the fire protection of Winnipeg, Canada, is equipped with four sets of double-acting three-throw pumps, each having a capacity of 1,800 imp. gal. per minute against a pressure of 300 lb. per square inch. and with two sets each able to deliver 900 gal. per minute. These pumps are operated with three gas engines, one of 540 h.p. and two of 270 h.p. each, all using producer gas. The air-compressing plant and storage tanks are in duplicate, and are so arranged that the whole plant can be started within one minute after an alarm has been received. The heavy cast iron mains, 20 in. in diameter, have been laid in the principle business districts and are constantly kept charged with water. The pumps were made and erected by Messrs. Glenfield & Kennedy, Ltd., and the engines and producer plant by Messrs. Crossley Brothers, of Manchester, Eng.

**A. LEOFRED**  
(Graduate of McGill).  
**Consulting Engineer**  
**WATERWORKS** A SPECIALTY.  
30 St. John Street **QUEBEC**  
Metropolitan Ins. Bldg. Phone 545.

**STEEL**  
**HIGHWAY**  
**BRIDGES**

**JENKS & DRESSER**  
SARNIA ONT.

BUILDERS OF  
**STEEL HIGHWAY BRIDGES**  
**STRUCTURAL STEEL WORK**  
**CONCRETE ABUTMENTS**

**Crushed Stone, Limited**  
**STONE** of any Size and in any Quantity on hand for Sidewalks, Roadwork or Concrete Work

Works: **KIRKFIELD, ONT.** Head Office: 47 Yonge St. Arcade, **TORONTO**  
Phone Main 4516  
G. W. Essery, Manager.

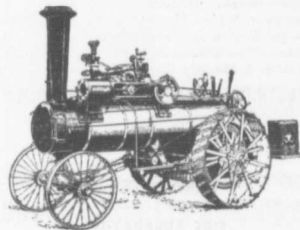
**Blue Lake Cement**

MADE BY  
**THE ONTARIO PORTLAND CEMENT CO. LIMITED**  
HEAD OFFICE: BRANTFORD, ONT. LONG DISTANCE PHONE 194

**THE JOHNSON CORRUGATED STEEL BAR**



FOR  
**REINFORCED CONCRETE**  
Manufactured by  
**THE CORRUGATED STEEL BAR CO. OF CANADA, LIMITED**  
Operating under Johnson Patent No. 91650 and by license of Sir Wm. Mather.  
Office: Coristine Building, **MONTREAL**

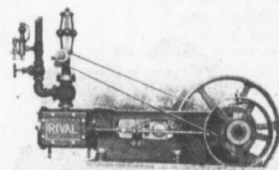


New, Re-built and Second-hand  
**TRACTION and PORTABLE ENGINES**  
(Simple and Compound)  
For drawing and driving **Rock Crushers, Road Graders, Cement Mixers, Grinders, Thrashers, Plows, Saw Mills** and miscellaneous uses.  
All Powers Quality the Best  
Correspondence Solicited  
**Sawyer & Massey Co., Ltd.**  
Road Machinery Department  
Hamilton Canada

**LIGHTNESS, STRENGTH AND ECONOMY**

Seagrave Patent Trussed Ladders, Trussed Aerial, City Service and Village Hook and Ladder Trucks, Combination Hook and Ladder Trucks and Chemical Engines, Trussed Trucks and Hand Pumps, Combination Hose Wagons and Chemical Engines, Hose Wagons, Combination Hook and Ladder Trucks and Hose Wagons, Chemical Engines, Fire Extinguishers, Hose Reels, Patrol Wagons, Ambulances, Specialty Wagons, Patent Sleigh Runners, and other Modern Fire Fighting Tools.

Prompt attention given all inquiries. All goods built to order.  
Long Distance Phone 686 and 684 **W. E. SEAGRAVE, WALKERVILLE ONT.**



**RIVAL ENGINES**  
MEDIUM PRICE  
MEDIUM SPEED  
MEDIUM SIZE

Write for Circular.  
**LAURIE ENGINE & MACHINE CO., Limited**  
**MONTREAL**  
Toronto Agent: W. H. PARMELEE. Halifax Agents: GUILFORD & SON