

ECONOMICAL PRIMARY METERING

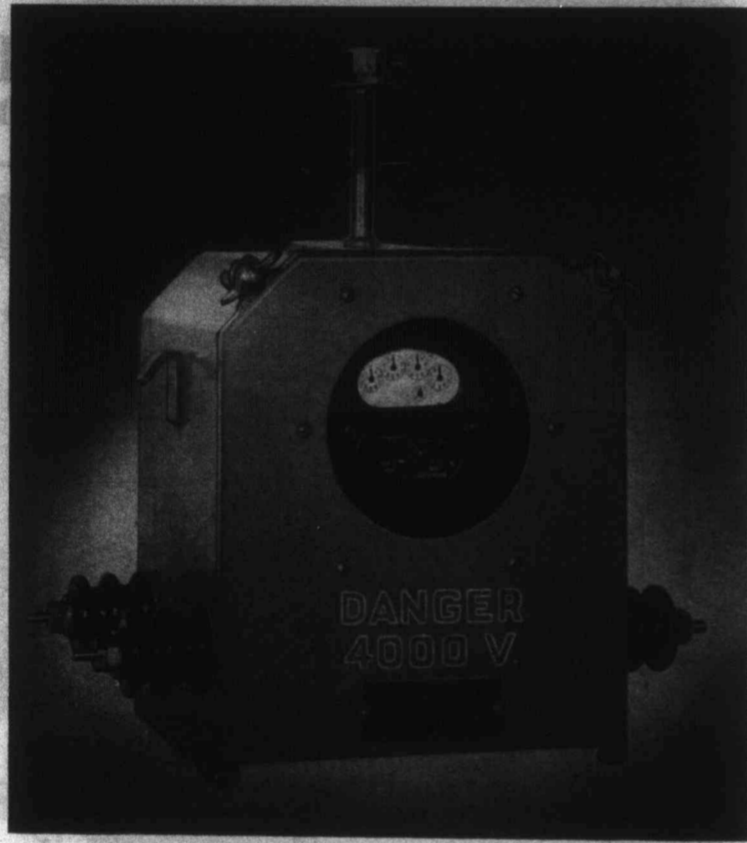
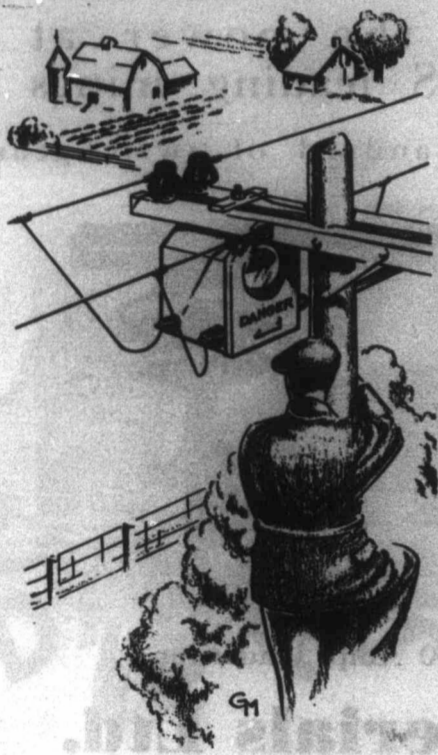
At 2300 and 4000 Volts

• APPLICATION

Provides accurate outdoor metering for rural service, small plants, temporary building operations. Permits tamperproof metering of the customer's load on the primary side of the transformer thus including line and transformer losses from the point of metering.

• FEATURES

Easily installed.
Meter easily read.
Meter may be removed without disturbing the outfit on the crossarm.



Type MV Metering Outfit

Packard

ASK FOR INFORMATION

PACKARD ELECTRIC COMPANY LIMITED
ST. CATHARINES, ONT.

Gentlemen: Please send me bulletin on Type MV metering outfits.

Name

Company

Position

Address

**PACKARD ELECTRIC COMPANY
LIMITED**
ST. CATHARINES, ONT.

TORONTO • MONTREAL • WINNIPEG
VANCOUVER • HALIFAX • ST. JOHN

Electrical News and Engineering—April 15, 1935

131589

POLYPHASE WATTHOUR METERS

VERTICAL TYPE



The Sangamo Type HC Polyphase Meter is built in two different vertical models, the bottom connected and the side connected. These meters are identical with the exception of the way the terminals are brought out.

The arrangement of terminals at the bottom of the meter is very convenient if there is a limited space available.

The side connected meter is preferred for some installations as it simplifies the connections to the meter, especially when the meter is used with other instruments or meters having side connections.

Both models can be supplied with either glass or metal covers and either cyclo-meter or clock type recording trains.

**SANGAMO
COMPANY LIMITED**

Toronto, Montreal and Winnipeg, Canada

Electrical News and Engineering—April 15, 1935

MEIGHEN PAPERS, Series 5 (M.G. 26, I, Volume 206)

**PUBLIC ARCHIVES
ARCHIVES PUBLIQUES
CANADA**