

The Road  To Dollars

# YORKTON

The Commercial, Educational, Judicial Land and Railway Centre of  
**Eastern Saskatchewan**

The largest and most prosperous town between Winnipeg and Saskatoon on the C.P.R. main line from Winnipeg to Edmonton.  
Sited in the midst of a prosperous and fertile farming area.  
Adequate railway facilities unequalled; one of the greatest grain-shipping points of Canada.

## Yorkton Wants

Factories of all kinds:--Abattoir, Dairy, Tannery, Automobile Assembling Plant, Skilled Laborers, Masons, Carpenters, Painters, Domestic Help, Wholesale Business of all kinds.  
A place for you and yours. An opportunity to grow prosperous with a prosperous community.

A hearty welcome awaits you at Yorkton.

Write for Full Particulars—But Write To-day.

**G. H. BRADBROOK, Secretary Board of Trade, YORKTON, SASK.**

# THE CANADIAN BANK OF COMMERCE

Head Office: TORONTO

Paid-up Capital, \$10,000,000; Rest, \$8,000,000

SIR EDMUND WALKER, C.V.O., LL.D., D.C.L., President.  
ALEXANDER LAIRD, General Manager.  
JOHN AIRD, Assistant General Manager.

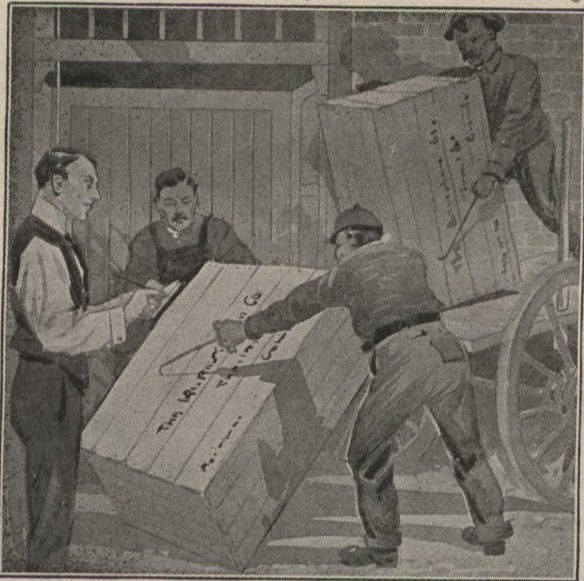
241 Branches in Canada, United States, England and Mexico

## DRAFTS ON FOREIGN COUNTRIES

This Bank issues drafts on the principal cities in foreign countries drawn in the currency of the country in which the drafts are payable. These arrangements cover over 500 of the principal cities and towns throughout the world.

## TRAVELLERS' LETTERS OF CREDIT

These Letters of Credit are issued for the use of travellers and tourists and may be obtained available in every part of the world. The holder can draw whatever sum he requires when needed without risk or difficulty.



## How are you fixed when goods arrive?

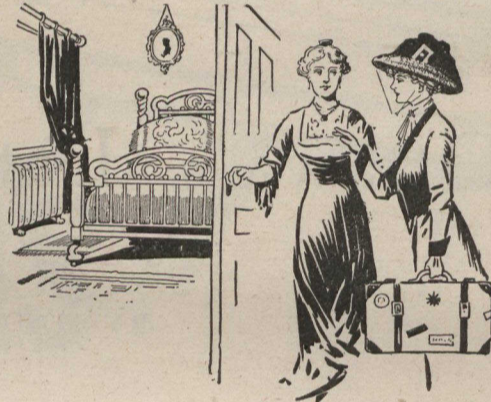
**D**OES your shipping room present a scene of noisy, bustling disorder? Are you compelled to clog or temporarily paralyse the running of your business by shorthanding your various departments in order to accommodate fresh shipments as they arrive? Or, is it possible for any two men to take hold and expeditiously, economically and safely—without waste of time or energy—dispose of the goods systematically and in proper arrangement. Your answer depends upon whether or not you use

# OTIS FENSOM FREIGHT ELEVATORS

In point of utility, convenience and economical efficiency, your Otis-Fensom Elevator bears the same indispensable relation to modern business as the telephone, typewriter and electric light. It makes for decidedly improved business conditions. It saves labor—it saves time—it saves calling clerks, salesmen or other employees from their regular duties in the store or office. It enables you to keep your ground floor clean and inviting, and to use all of the ground floor space for salesmanship and display. It does away with expensive hand labour and substitutes mechanical facilities that keep pace with the increasing demands of your business.

Send for "Freight Elevators and their Uses."

**The Otis-Fensom Elevator Co., Limited**  
Traders Bank Building : : : Toronto



## The Guest Room

should be a "rest" room. Often it's quite the reverse. Cold, draughty, musty-smelling and cheerless, it is sometimes effective in putting a damper on the visitor's enjoyment. Nowadays in homes heated with a

## King Boiler and Radiators

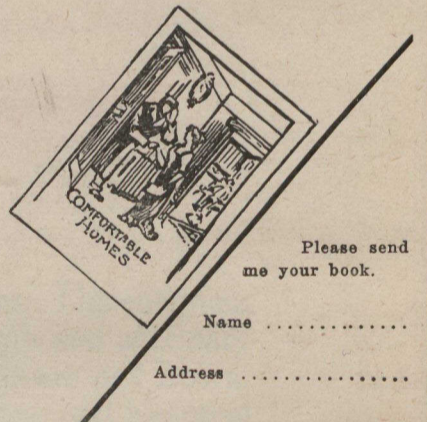
the guest-room shares equally with every other room in the pure, clean, invigorating warmth evenly diffused throughout the house. A turn of the valve regulates the temperature to any desired degree. No dust or fuss to cause inconvenience or expense.

Write for your copy of "Comfortable Homes."

## STEEL and RADIATION LIMITED

Head Office: Fraser Ave.  
Showrooms: 78-82 Adelaide St. E.  
TORONTO

Branches in all the principal cities.



Please send me your book.

Name .....

Address .....

# NATIONAL TRUST CO.

LIMITED

J. W. Flavelle,  
PRESIDENT

W. E. Rundle,  
GENERAL MANAGER

CAPITAL AND RESERVE, \$2,700,000

Wills naming the Company Executor may be left for safe-keeping in our Deposit Vaults free of charge. Write for Booklet containing forms of wills.

## OFFICES

TORONTO MONTREAL WINNIPEG EDMONTON  
SASKATOON REGINA