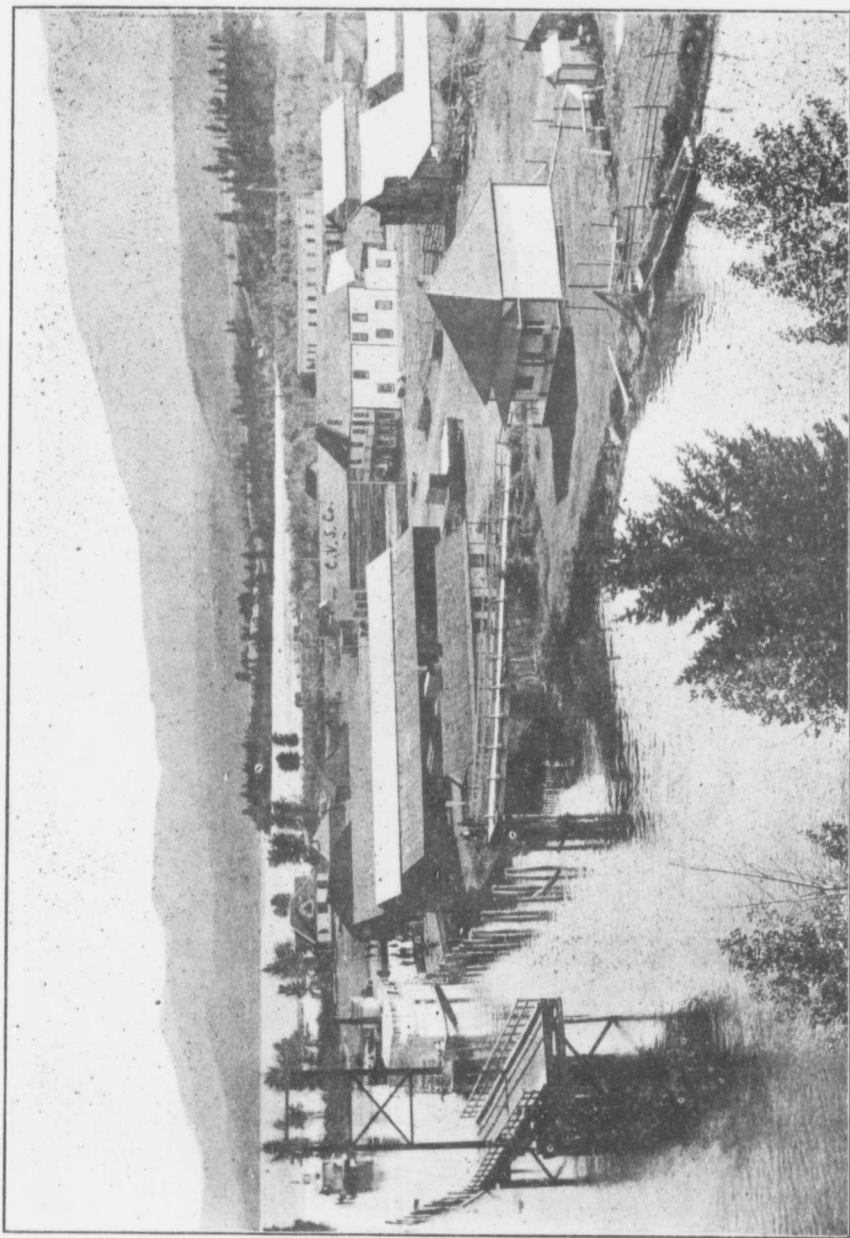


Athalmer will instal an up-to-date Waterworks and Sewerage system; with a branch of the Bank of Montreal located in Athalmer, investors will feel safe in re-mitting through that institution, and know that their business will be properly looked after.



Steamboat Landing and Swinging Bridge, Athalmer

There is no time like the present to make your selection, and profit by the large increase in values, which are sure to follow the approach of the Kootenay-Central Railway (a C. P. R. line) into Athalmer in the early fall.