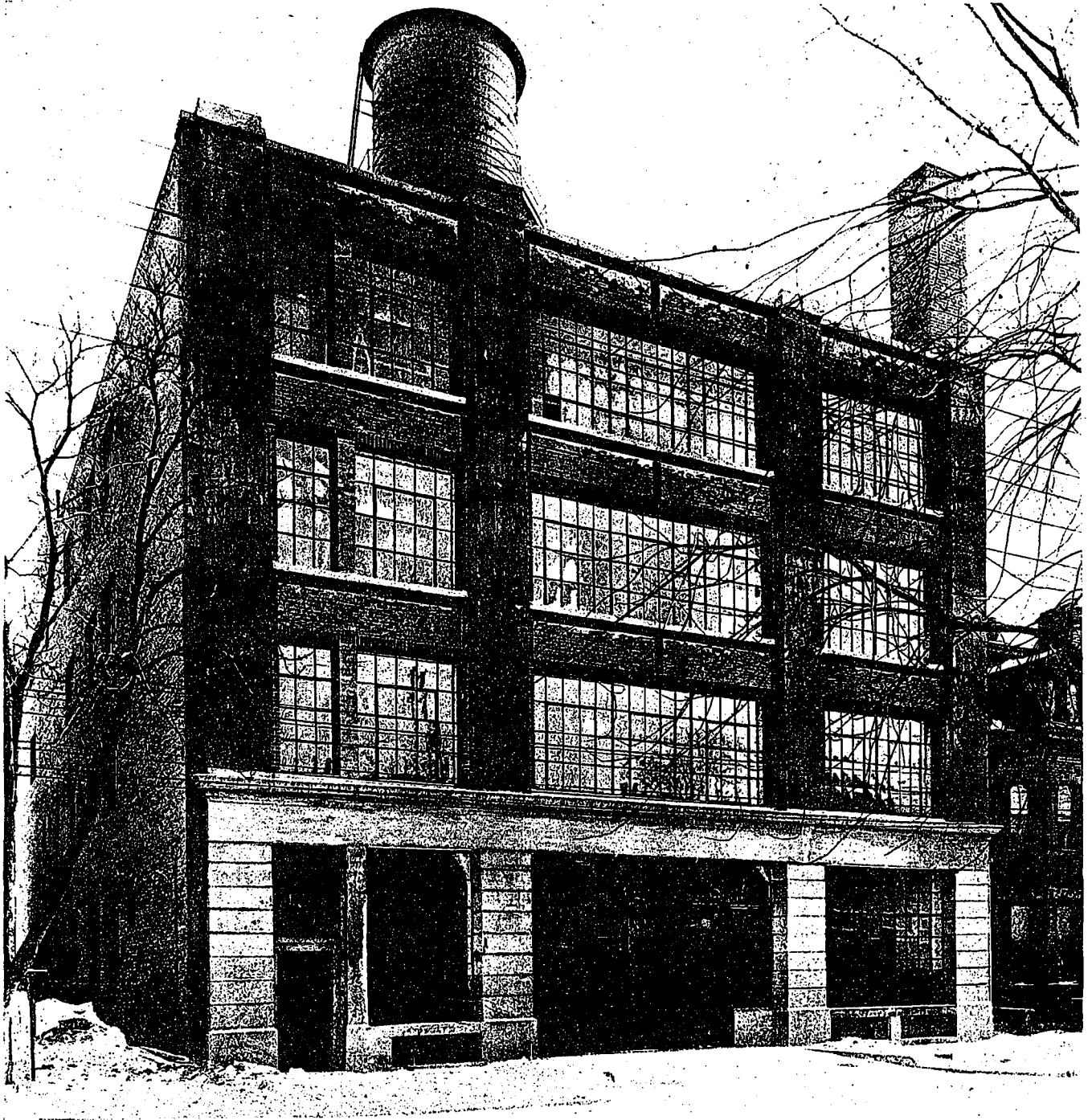


past flush with the outside brick curtain wall, so that the columns and beams do not show on the side elevations. The spandrel walls of the office are built of interlocking tile, faced with brick on the outside, and plastered on the inside. The elevator pent house is also built of interlocking tile plastered both inside and outside. All interior partitions are built of eight-inch tile.

type of construction, with two-way reinforcing. The largest panel is twenty-four feet square. The slab is nine inches thick, and the drop heads twelve inches thick, and eight feet square. The columns and footings are designed for two additional storeys, the present roof being the future fifth floor. The elevator pent house has been arranged so that the two additional storeys



VIEW FROM SIMCOE STREET, GARAGE, AUTOMOBILE AND SUPPLY CO., LTD., TORONTO, ONT.

HARKNESS & OXLEY, ENGINEERS.

SHEPARD & CALVIN, CONSULTING ARCHITECTS.

Door frames are constructed of nine-inch steel channels between the office and the garage, and the doors are all three-ply tin-clad, except where kalameined doors have been used. All corners of partitions are protected with steel angles.

The reinforced concrete is of the flat slab

can be added, and the building completed without interfering with the operation of the elevator. The floors were finished as poured with a one-inch surface of concrete, composed of one part of cement to one and one-half of sand, and three of trap rock not exceeding three-eighths inch.