

Rubber & Leather Belting.

TRY OUR NEW

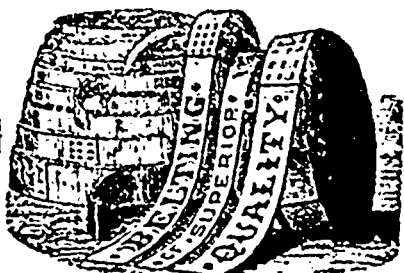
SEAMLESS

RUBBER BELTING

AND YOU WILL NOT
BE DISAPPOINTED.

Catalogues Furnished.

Correspondence Solicited.



Saw Mill

AND

MINING SUPPLIES,

AND

RUBBER GOODS

OF ALL KINDS.

ESTEY, ALLWOOD & CO., 68 Prince Wm. St., St. John, N.B.

Lloyd Manufacturing & Foundry Co.

(LIMITED.)

Kentville, Nova Scotia.

MANUFACTURERS OF

LANE'S IMPROVED ROTARY SAW MILLS,

LLOYD'S SHINGLE MACHINES,

CYLINDER STAVE MILLS,

HEADING ROUNDERS,

BUZZ AND SURFACE PLANERS,

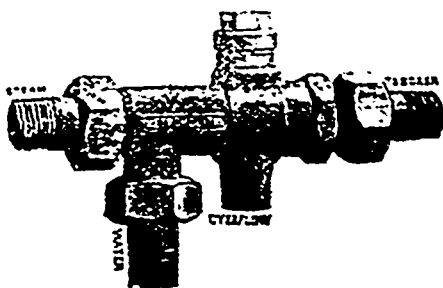
AND ALL KINDS OF SAW MILL AND MINING MACHINERY.

W. & A. MOIR,

MECHANICAL ENGINEERS, Halifax, N. S.

THE

Metropolitan Automatic Injector

for Feeding all kinds of Boilers, is the
best in the market. Simple in construction,
perfectly automatic, works as well
on water pressure as on a lift.

Send for descriptive circular

Special attention given to Building and
RepairingMARINE ENGINES and
OTHER MACHINERY.

MACDONALD & CO.

(LIMITED)

HALIFAX, N. S.

Manufacturers of and Dealers in

PUMPING MACHINERY

FOR MINERS' USE,

IRON PIPES AND FITTINGS, &c.

COPPER PLATES, PLAIN & SILVERED, STEAM ENGINES,

PUMPS, STONE BREAKERS,

STAMP MILLS, ROTARY SAW MILLS

SHINGLE MILLS, STAVE PLANERS,

RUBBER AND LEATHER BELTING,

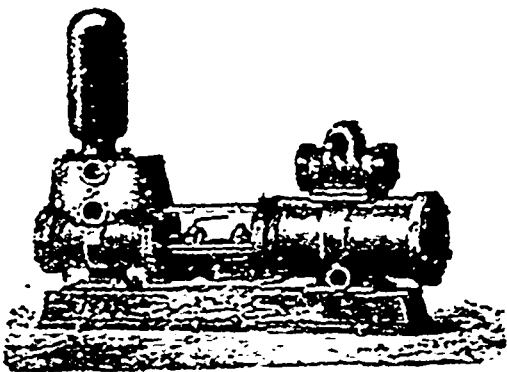
CYLINDER AND
MACHINE OILS.

Drill Steel,

Picks,

Shovels,

ETC., ETC.



AUSTEN BROTHERS,

HALIFAX, N. S.

MINING.

During the past week there has been nothing particularly new to report in mining matters. In most gold mining districts managers are too busy to furnish information, a very good sign, as it proves there is general satisfaction with results and very little desire to sell out. Any really good lot that is placed on the market is quickly purchased at cash or virtual prices, and speculators trying to hold properties for long periods of time being given the cold shoulder. A number of excellent prospects, properly but slightly developed, but showing up well, are being offered, but in most cases these are held at prices far beyond reason, and are likely to remain without takers, unless their owners are willing to make better terms. A day of high prices being paid for more prospect holes is over, and purchasers are now exercising wise precautions in investing. As a result there are no failures, and gold mining has become as safe a business as the Province affords.

Bridgeville, on the East River of Pictou, is just now enjoying quite a boom, consequent on the development of the iron mines in the neighborhood. Ten new houses are now in course of erection. Three shafts, one of which is two hundred feet deep, are being worked constantly day and night. The output in twenty-four hours reaches nearly 100 tons. The New Glasgow Company have 2000 tons out awaiting transportation. The New York Company it is said have bought out the Grant claims, and are all about purchasing from Mr. Thos. McMillan.

The following are the official gold returns so far received at the Mine Office for the month of May:—

District.	Mill.	Qtz. Crushed.	Ozs. Gold.
Sherbrooke.....	Miners.....	53½	8½
Salmon River.....	Dufferin.....	740	213
Oldham.....	Oldham G. M. Co.....	168½	327½
Waverley.....	Palgrave Co.....	110	34½
Caribou.....	Moose River G. M. Co.....	130	24
*Caribou.....	Damas Touquoy.....	432	57½
Unisk.....	Phoenix.....	240	47½
S. Unisk.....	Withrow.....	20	9½
Lake Catcha.....	Oxford.....	112½	79½
15 Mile Stream.....	Egerton.....	100	207½
Stormont.....	Rockland.....	30	19½
Brookfield.....	Philadelphia.....	244	170
Molega.....	Annand.....	75	137½
Montague.....	Parker-Douglas.....	250	65½
* Surface dump and quartz			

A Valuable Iron deposit on Mr. Campbell's farm, St. Patrick's Channel, North Whycocomagh Bay, Inverness County, Cape Breton, N. S.—This newly discovered iron lode is very conveniently situated, being within three quarters of a mile of shipping, and only four and three quarter miles from the village of Whycocomagh, on the Post Road following the north side of St. Patrick's Channel toward Baddeck. The lode occurs in a zone of metamorphosed lower carboniferous rock nearly four miles wide, between the southern end of Mullach and Lewis Mountain Road. The lode or iron deposit was discovered this spring in the valley of a large brook, one mile and a half west of where the Lewis Mountain Road joins the Baddeck Post Road at Little Narrows. The mountain here rises to a height of from 792 to 820 feet above the level of the Bras d'Or.

The glen in which the iron mine was discovered is wide and deep, and heavily timbered with birch and beech. There is also a good carriage road from St. Patrick's Channel through the glen to Lewis Mountain, thence to the south end of Lake Ainslie.

The property is controlled by Judge Tremain of Baddeck, who is at present engaged in mining and prospecting. A shaft sunk fifteen feet on the lode has increased the width of the vein from one foot on the surface to four feet at the bottom of the shaft, and the formations in proximity to the lode now worked carry numerous small veins of iron, which is a good indication of the lode becoming a large body of ore as depth is attained. The lode is of a deep blue, very heavy, almost pure iron. I am informed that an analysis proved the ore free from sulphur, which is indeed a great item in its favor. It is also in a formation that resembles the iron and manganese strata of Lock Lomond, Cape Breton. A description of the formation may be read from the report of the Dominion Geological Survey of Cape Breton for the years 1872-4, pages 7, 42 and 84 H, and the map of St. Patrick's Channel, sheet number 15, shows neatly the geology and geological boundaries as well as the direction of dip and strike of the stratum.

It is a matter of very slight difficulty to construct a tramway from the mine to a place of shipping on the shore of St. Patrick's Channel, the distance from the mine to the shore being less than three quarters of a mile and on a gentle descent all the way. The stage road from Baddeck to Whycocomagh is only five minutes walk from the mine, steamers run daily from Sydney to Whycocomagh calling at Baddeck and Little Narrows and connect with the *Marian* and *Neptune* which call at Grand Narrows, East Bay, St. Peter's, Lennox Passage and Port Mulgrave, at which place a connection is made with the Intercolonial Railway. The Cape Breton Railway from Port Hawkesbury via Grand Narrows to Sydney will be completed next September, at which time a journey through Cape Breton may be accomplished with pleasure and rapidity, and the present depending on steamers be avoided.

JOHN MACMILLAN, Geologist.

MOLEGA ITEMS.—The Molega Co's mine looks splendidly, the yield being about 150 per cent profit.