

18" Double Back Geared Engine Lathe.

We can make immediate shipment of this Lathe in 8 and 10 ft. lengths.

We manufacture Lathes to swing from 18" to 72" diameter.

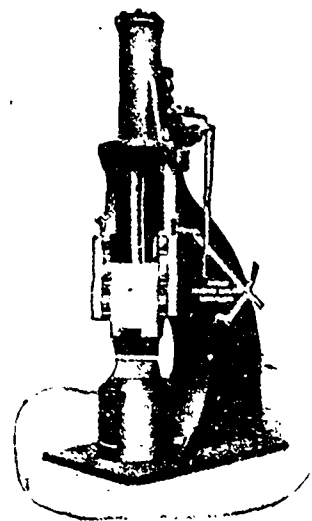
We manufacture Drop Hammers from 200 lbs. up. Single and Double Frame Steam Hammers from 350 lbs. up.

We can make immediate shipment of 600 lb. and 1,000 lb. Single Frame Steam Hammers.

All tools of our manufacture sold under guarantee.

Write us for further particulars.

London Machine Tool Co., Limited
HAMILTON, CANADA.



600 lb. Steam Hammer.

Morris Machine Works

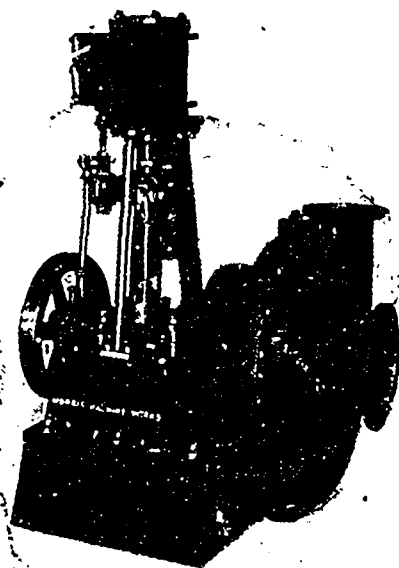
BALDWINVILLE, N.Y.

MANUFACTURERS OF

Centrifugal
Pumping
Machinery and
Steam Engines

SPECIAL PUMPING
OUTFITS TO SUIT
SPECIAL
REQUIREMENTS

Estimates Furnished
upon Application



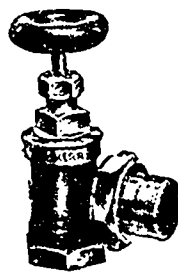
H. W. PETRIE, Agent
Toronto, Canada

NEW YORK OFFICE: 39-41 CORTLANDT ST.
HENION & HUBBELL, Agents, 61-63 North Jefferson St., CHICAGO, ILL.

KERR'S GLOBE AND GATE VALVES

STRICTLY
HIGH GRADE.

TESTED &
PACKED



THE KERR ENGINE CO. LIMITED

VALVE AND HYDRANT MANUFACTURERS
WALKERVILLE, ONT.