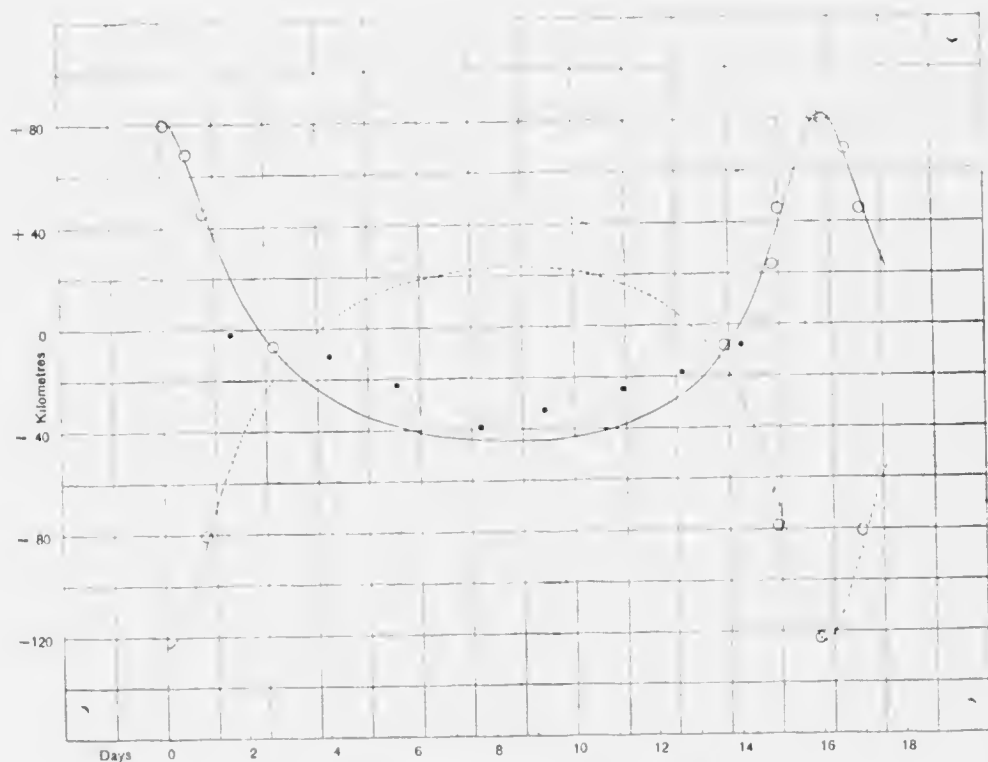


In the accompanying graph the continuous curve represents the primary, the dotted curve the secondary. The open circles represent the grouped observations used in the least-squares solution, while the dots represent the unused observations grouped usually two together. The latter show the effect of the blending of the spectra on the measurement, as they all fall off the main curve on the side towards the γ -line. This condition is preferred, however, to using their erroneous values in the solution.

Dominion Observatory

Ottawa

April, 1916.



PROVISIONAL VELOCITY CURVES OF BOSS 2484