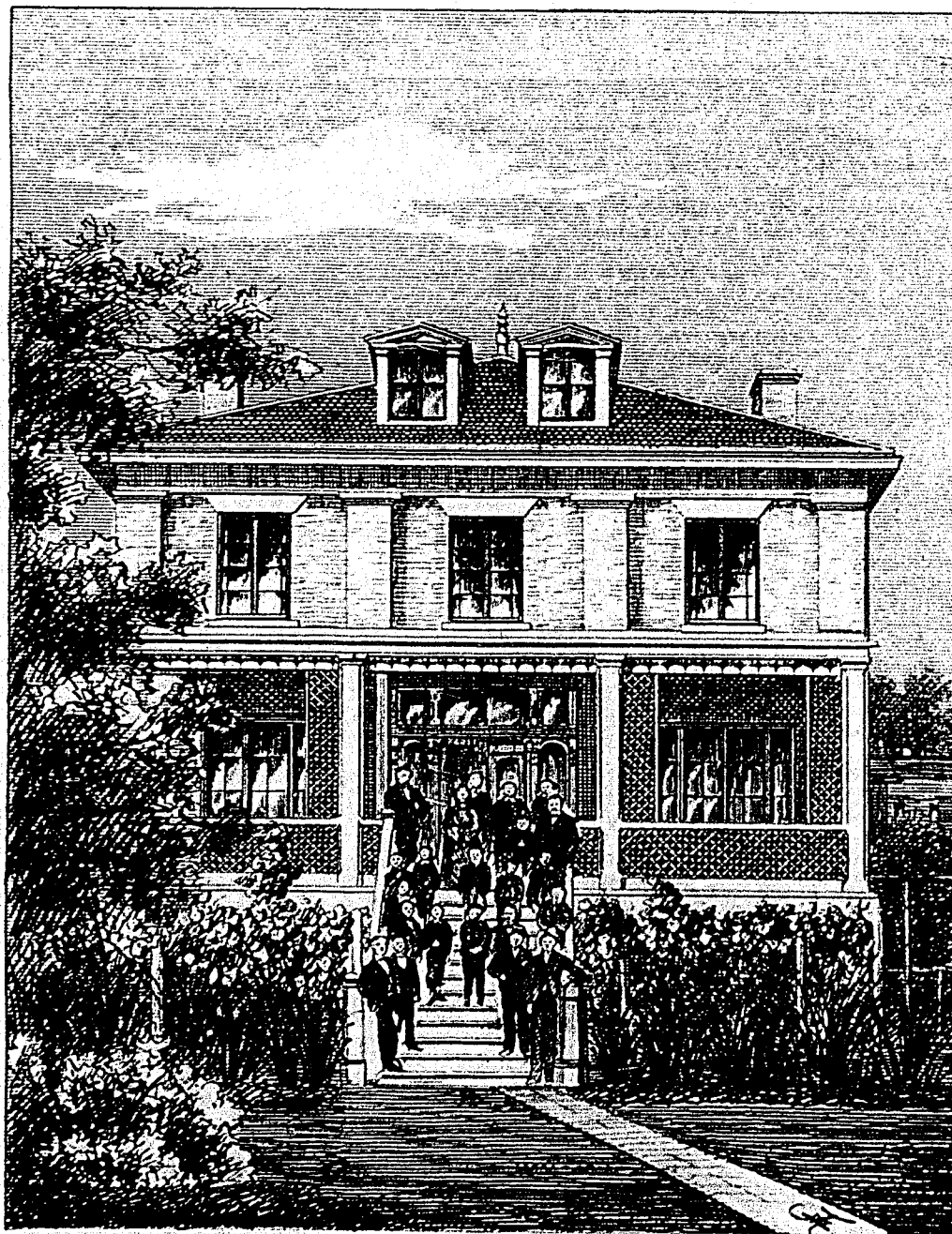


THE MANUAL ALPHABET FOR THE DEAF AND DUMB.



THOMAS WIDD, PRINCIPAL OF THE MONTREAL PROTESTANT INSTITUTION FOR THE DEAF AND DUMB.



THE PROTESTANT INSTITUTION FOR THE DEAF AND DUMB, MONTREAL.