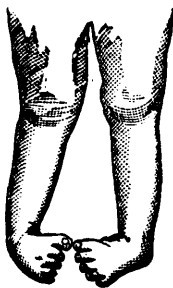


**AUTHORS & COX,**

135 CHURCH ST., TORONTO,

TELEPHONE 2267.

Have had over twenty years experience in the manufacture of

**Artificial Limbs****TRUSSES AND  
Orthopædic Instruments**Spinal Supports, Instruments  
for Hip Disease, Disease of  
the Knee and Ankle, Bow  
Legs Knock Knees, Club  
Foot Shoes, Crutch-  
es, etc., etc.

REFERENCES:—Any of the leading Surgeons in Toronto.

**"MONSOON" TEA....**

Is packed under the supervision of the Tea growers, and is advertised and sold by them as a sample of the best qualities of Indian and Ceylon Teas. For that reason they see that none but the very fresh leaves go into Monsoon packages.

That is why "Monsoon," the perfect Tea, can be sold at the same price as inferior tea.

It is put up in sealed caddies of ½ lb., 1 lb. and 5 lbs., and sold in three flavours at 40c., 50c. and 60c.

STEEL, HAYTER &amp; CO., Front St., Toronto

**WYATT & CO.**

Members

Toronto

Stock Exchange.

48 King St. West, TORONTO.

Stocks, Bonds, etc., bought and sold on New York, Montreal and Toronto Stock Exchanges for cash or margin.

Grain and Provisions dealt in on Chicago Board of Trade.

Shares of Standard Mining Companies in British Columbia and Ontario bought and sold.

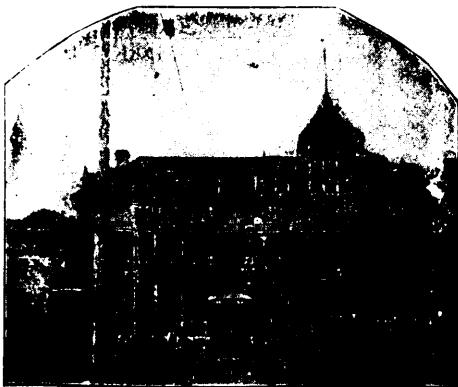
**H. O'HARA & CO.,**

(Members Toronto Stock Exchange).

**Stock and Debentures Brokers,**24 Toronto Street,  
TORONTO.

Shares bought in Toronto, Montreal and New York for cash or on margin carried at lowest rates of interest.

Telephone 915

**HOTEL DEL MONTE** PRESTON  
MINERAL  
OPEN WINTER AND SUMMER. SPRINGS

Mr. Thos. Heys, the celebrated analyst, says: "In my opinion Preston is the most healthy location in Canada. In addition, the Mineral Baths will prove very beneficial in many complaints. His analysis says per gal., temp. 47.8°; altitude 929 sea, 682 Lake Ontario.

Sodium Bicarb	grains,	7.231
Calcium	"	16.750
Ferrous	"	.620
Potassium Sulphate	"	2.830
Calcium	"	48.770
Magnesium	"	24.435
Chloride	"	2.268
Ammonium	"	.052
Silica	"	.910
Organic Ammonia	"	.007

103.873

Hydrogen Sulphate a trace, and Carbonic Acid Gas, cub. inches 10.28.

Physicians should send to R. Walder, Preston, for circulars to give to their patients requiring Mineral Baths. The many cures effected stamps them the best in Canada.