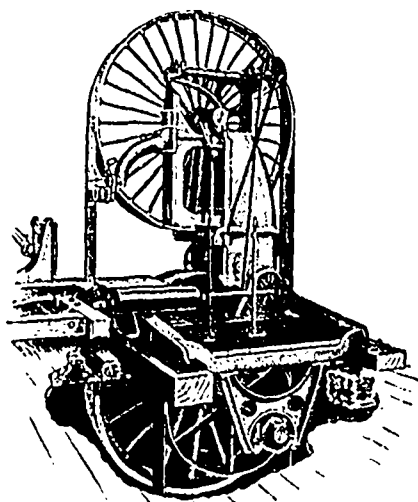
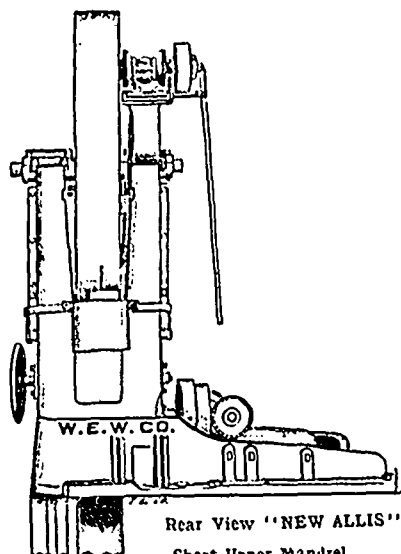


Lumber Machinery

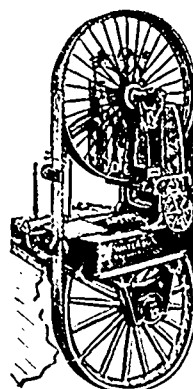
The Most Modern



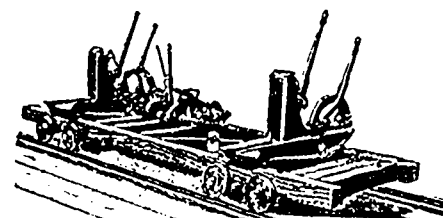
Right Hand Front View.
"NEW ALLIS"
It surpasses all others in many points.



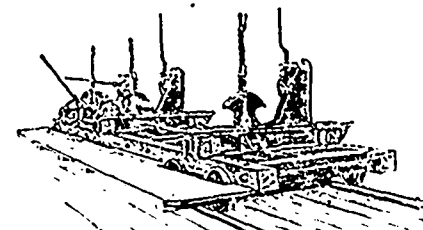
Rear View "NEW ALLIS"
Short Upper Mandrel.
Wheel Centrally Hung.
Lower Wheel Inside Frame.
NOTE



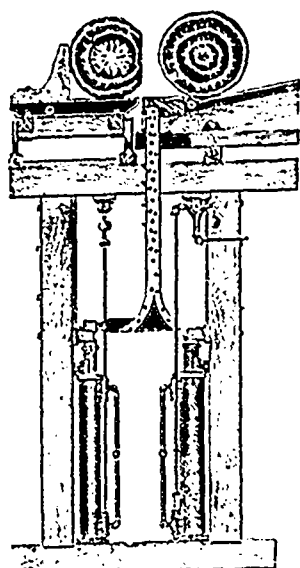
34 NEW ALLIS
BANDS
Sold in Canada since
Jan., 1894.



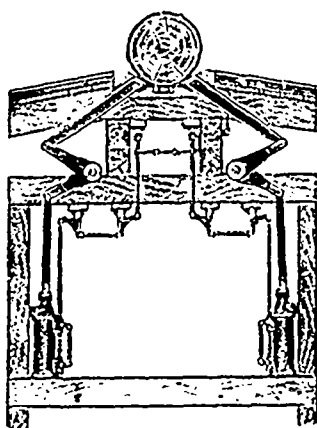
Reliance 2-Block Carriage.



Unbreakable Steel Girder Carriage.

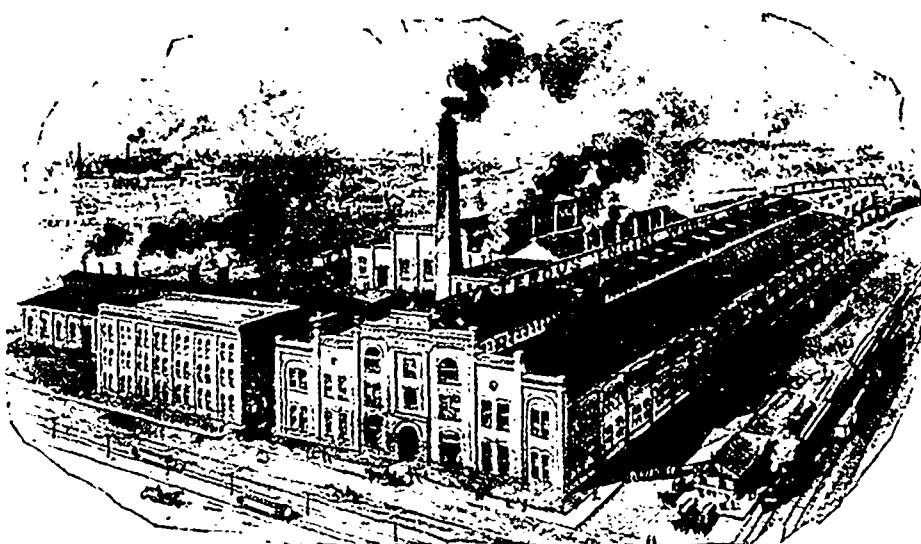


Our Steam Nigger.



Kelly Log Kicker.

Where It Is
Manufactured



Best Quality of Work
Low Prices

Waterous, Brantford, Canada

ESTABLISHED

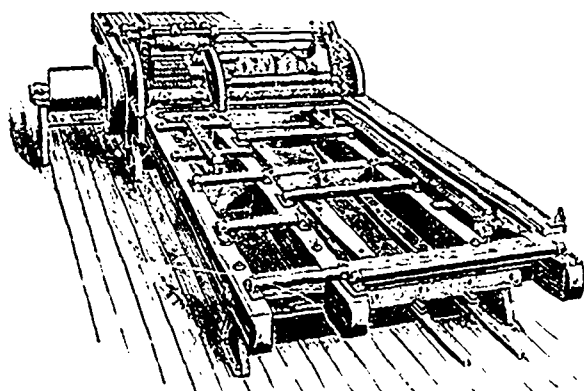
1844

INCORPORATED

1874

NEW WORKS OCCUPIED

1896



Combined Gang Edger and Flooring Machine.

Giant CHAIN

Detachable

4....
SIZES



SAVE
MANUAL
LABOR

LOG
TOOTH

On 600-1050-1075.

A Most Satisfactory and Durable Chain for Log
Haul-Up, Heavy Refuse Conveyors, etc.

No. 550



One of our Cheap Detachable Chains
for Sawdust, Refuse, Etc.

Over 50 Sizes and Styles of Chains, varying from 75 to 20,000 lbs. Breaking
Strain. Special Attachment Links for all purposes.