

the recent advent of warm weather was so sudden and the heat so intense that the berries are ripening faster than they can well be taken care of.

SUGAR AND MOLASSES.—Trade has been quiet in sugars, but prices have continued firm. The country store-keepers, and even city retailers, have been holding out for lower prices. But as they have about reached rock-bottom, and the preserving season is close at hand, a good business is expected during next week. Molasses has been quiet, but figures hold firm.

TEA AND COFFEE.—The tea trade continues very quiet. Smith, Baker & Co. write as follows: "Higher grade first crop teas, with any pretensions to good water, are a thing of the past for this season. Concerning the second crop, the native reports from the interior indicate a poor and insufficient yield." Coffee continues quiet and in light demand, but prices are firm.

FISH OILS.—Our advices from Montreal are as follows: "Steam refined oil is held firmly at 51c. to 53c., there being little, if any, to come forward. Cod oil is in big demand. Sales of barrels are reported at 37c. We quote 37c. to 38c. Cod liver oil is dull at 45c. to 55c.

FISH.—No change has transpired in the local fish market. This branch of trade is practically lifeless. We know of a lot of 100 odd barrels of very fat herring that were brought to this market on Monday. Though they were carefully and well cured and were in prime condition in every respect, the owner was unable to obtain any offer—even \$1 per barrel—for them. The demand seems now to run for smaller, firmer and leaner fish. Some fair catches of cod, hake, mackerel and herring are reported to have been made all along the shore. No very large takes have been secured, but prospects are improving and strong hopes of a large catch this season are entertained—apparently with reason. Our outside advices are as follows:—
Montreal, July 8—"Dry cod is selling at \$1.50 per quintal from Gaspe." Gloucester, Mass., July 8—"New Georges was quoted at \$5.25 a qtl. for large and small at \$4.63; Bank, \$4.87 for large and \$4.37 for small; shore, \$5.25 and \$4.25 for large and small; dry bank, \$5.25; cured cusk at \$4 per qtl.; hake \$2.63; haddock \$3; heavy salted pollock \$2.25, and English-cured do., \$2.87 per qtl.; Labrador herring \$5 bbl; medium split, \$4.50; Newfoundland do., \$5; Nova Scotia do., \$6; Eastport, \$4; split shore \$4.25; round do., \$3.50; round Eastport \$3.25; pickled codfish, \$7; haddock \$6; halibut heads, \$3; sounds, \$11; tongues and sounds, \$9.50; tongues, \$8; alewives, \$4; trout \$14.50; California salmon, \$15; Halifax do., \$23; Newfoundland do. \$16; shad, \$12."

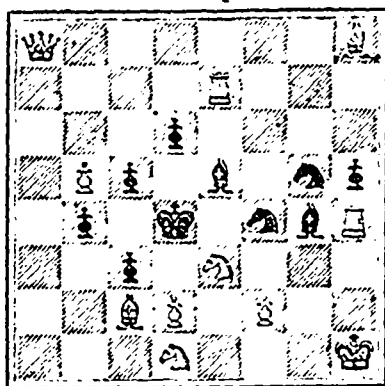
CHESS.

Solution to Problem No. 26, R to B3. Solved by C. W. L. and J. W. Wallace.

PROBLEM No. 28.

From *British Chess Magazine*.

BLACK 10 pieces.



WHITE 11 pieces.

White to play and mate in two moves.

GAME No. 29.

HANFE—ALLOAHER.

WHITE	BLACK
R. P. Fleming, Montreal.	G. Barry, Montreal.
1 P to K4	P to K4
2 Kt to QB3	Kt to QB3
3 P to KB4	P takes P
4 Kt to B3	P to Kt4
5 P to KR4	P to Kt5
6 Kt to KKt5	P to KR3
7 Kt takes P	K takes Kt
8 P to Q4	P to B6
9 B to B4 ch	K to K
10 P takes P	P to Q3
11 B to K3	Kt to B3
12 Q to Q2	P takes P
13 Castles QR	B to KKt5
14 Q to R2	P to KR4
15 P to K5	P to Q4
16 B to Q3	KKt to Kt
17 B to Kt6 ch	K to Q2

18 Kt takes P	B to R3
19 Kt to B4	KKt to K2
20 B to K4	Q to KKt
21 R to Q3 a	Q takes RP
22 R to QR3	Q to Kt
23 P to K6 ch	K to B b
24 P to Q5	Kt to K1
25 R to QB3	KKt to Kt3
26 K to Kt c	Kt takes Kt
27 B takes Kt	B takes B
28 Q takes B	Q to Kt2
29 P to Q6	P to QB3
30 R to B5!	Kt to Kt3
31 Q to Kt5	R to R3
32 B takes QBP!	P takes B
33 R takes P ch	K to Kt2 c
34 Q mates.	

NOTES.

By R. P. Fleming.

a An important move; the Rook supports the Bishop; effectually prevents the Queen capturing QBP advantageously; escapes before it is asked from P to B7, and gets into active offensive play at the same time.

b If 22 B takes P White wins a piece in the combination resulting from 24 P to Q5; Black, however, should have retired the K to K sq.

c White might have proceeded more brilliantly with 26 B takes Kt, 26 Kt takes B; 27 R takes P ch. If Black 27 K takes R; 28 K takes Kt, dis. ch; if *** 27 K to Kt; 28 Kt takes Kt, 28 B takes B ch; 29 K to Kt etc.; if 27 K to Q; 28 Kt takes Kt, B takes B ch; K to Kt etc.
e If *** 33 K to Kt; 34 P to Q7 wins.—*Gazette*.

**Geo. H. Fielding,
SOLICITOR, &c.**
93 HOLLIS ST.
MINING SUITS PROMPTLY ATTENDED TO.
HOURS—9 A. M. TO 6 P. M.

Churns, Washing Machines,
Wringers, Mangles,
CARPET SWEEPERS,

Step Ladders, Filters,
EVERYTHING FOR

House Cleaning,

—AT—

CRAGG BROS. & CO.,

Cor. Barrington and George Sts.
HALIFAX, N. S.

Prices Always the Lowest!

LYONS' HOTEL,

Opp. Railway Depot.

KENTVILLE, N. S.

DANIEL McLEOD, - Prop'r.

Tea. Tea. Tea.

ARMY AND NAVY DEPOT.

We have just landed a choice lot of

TEAS,

including ORANGE PEKOE,
ASSAM PEKOE, and
SOUCHONG and CONGO.

Our 35c. and 40c. Blends are worth testing.

—ALSO—

LOAF, GRANULATED & MOIST SUGARS
PICKLES SAUCES, TINNED MEAT
AND SOUPS, GREEN PEAS, TOMATOES,
BEANS, ASPARAGUS, &c.,
STILTON, GORGONZOLA, GRUYERE AND
PARMESAN CHEESE, MUSHROOMS,
TRUFFLES, &c., AND ENGLISH BISCUITS
in every variety, by best makers.

Jas. Scott & Co.

CONTINENTAL HOTEL,

100 and 102 Granville St.,

(OPPOSITE PROVINCIAL BUILDING.)

The nicest place in the City to get a lunch, dinner or supper. Private Dining Room for Ladies. Oysters in every style. Lunches 12 to 2.30.

W. H. MURRAY, Prop.,

Late Halifax Hotel.

MARKET QUOTATIONS.—WHOLESALE RATES.

Our Price Lists are corrected for us each week by reliable merchants.

GROCERIES.

SUGARS.	
Cut Loaf.....	8
Granulated.....	6 1/2 to 6 3/4
Circle A.....	6 1/2
White Extra C.....	6 1/2
Standard.....	5 1/2 to 5 3/4
Extra Yellow C.....	5 1/2 to 5 3/4
Yellow C.....	5 1/2 to 5 3/4
TEA.	
Congou, Common.....	17 to 19
Fair.....	20 to 23
Good.....	25 to 29
Choice.....	31 to 33
Extra Choice.....	35 to 36
Oolong, Choice.....	37 to 39
MOLASSES.	
Barbadoes.....	31 to 33
Demerara.....	32 to 36
Diamond N.....	47
Porto Rico.....	33 to 35
Clenfuegos.....	32
Trinidad.....	32 to 33
Antigua.....	32 to 33
Tobacco, Black.....	38 to 44
Bright.....	42 to 58
BISCUITS.	
Pilot Bread.....	3.15
Boston and Thin Family.....	6 1/2
Soda.....	6 1/2
do in lb. boxes, 50 to case.....	7 1/2
Fancy.....	8 to 15

PROVISIONS.

No change in value, but the proposed duty is not yet established.

Beef, Am. Ex. Mess, duty paid.....	12.50 to 14.00
Am. Plate.....	13.00 to 14.00
Ex. Plate.....	15.50 to 16.00
Pork, Mess, American.....	16.50 to 17.00
American, clear.....	18.00 to 19.00
P. E. Mess.....	16.50 to 17.00
P. E. I. Thin Mess.....	14.00
Prime Mess.....	12.50 to 13.00
Lard, Tubs and Pails, P. E. Island.....	12
American.....	11 to 12
Hams, P. E. I., green.....	8 to 9
Prices are for wholesale lots only, and are liable to change daily.	

HOME AND FOREIGN FRUITS.

Apples, No. 1, per bbl. new Am.....	5.75
Changes, Valencia, repacked.....	10.00
Lemons, per case.....	5.00 to 6.50
Cocoanuts, new, per 100.....	4.50
Onions, Egyptian, per lb.....	2 1/2 to 3
Dates, boxes, new.....	5 1/2 to 6
Raisins, Valencia, new.....	9
Figs, Elme, 5 lb boxes per lb.....	11
small boxes.....	10 to 13
Prunes, Stewing, boxes.....	7
Pineapples, per doz.....	2.50
Bananas, per bunch.....	2.00 to 2.50
C. H. Harvey, 12 & 10 Sackville St.	

BUTTER AND CHEESE.

Nova Scotia Choice Fresh Prints.....	25
in Small Tubs.....	16 to 18
Good, in large tubs, new.....	15 to 16
old.....	10 to 15
Store Packed & oversalted.....	10
Canadian Top nship, new.....	18
old.....	8 to 10
Western.....	16 to 17
old.....	7 to 10
Cheese, Canadian, new.....	10 1/2
Antigonish.....	none

BREADSTUFFS.

Wheat and corn have started off again on the uphill grade, having advanced 2 1/2c. to 3c. for July, and 5c. on September, from the lowest point. Flour and cornmeal are consequently picking up in price. Mills quoting Garnet to day \$5.35, but looking for 15c. advance this week. Other millers speak in much the same way. We make no change in quotations.

FLOUR.

Manitoba Highest Grade Patents.....	6.40 to 6.50
High Grade Patents.....	6.50 to 6.75
Good 30 per cent. Patents.....	5.30 to 5.40
Straight Grade.....	5.10 to 5.15
Superior Extras.....	4.90 to 5.10
Good Seconds.....	4.60 to 4.70
Graham Flour.....	5.00 to 5.25
American Supr. Extras, in bond.....	4.35 to 4.40
American 90 per cent. in bond.....	4.90 to 5.00
Pillsbury's Best, in half bbls.....	3.30
Oatmeal.....	4.40 to 4.60
Rolled.....	4.60 to 4.80
Kiln Dried Cornmeal.....	2.60 to 2.70
Rolled Wheat.....	5.80
Wheat Bran, per ton.....	18.00
Shorts.....	21.00 to 22.00
Middlings.....	21.00 to 22.00
Cracked Corn.....	21.00
Ground Oil cake, per ton.....	35.00
Moulce.....	24.00
Split Peas.....	3.75 to 4.00
White Beans, per bushel.....	1.35 to 2.00
Pot Barley, per barrel.....	4.00 to 4.50
Canadian Oats, choice quality.....	5 1/2 to 6
P. E. I. Oats.....	62 to 66
Hay per ton.....	10.00

J. A. CHIPMAN & Co., Head of
Central Wharf, Halifax, N. S.

FISH FROM VESSELS.

MACKEREL—	
Extra.....	11.00
No. 1.....	13.00
2 large.....	12.00
2.....	11.50
3 large.....	11.50
3.....	11.50
HERRING.	
No. 1 Shore July.....	3.25 to 3.50
No. 1, August, Round.....	2.50
September.....	2.50
Labrador, in cargo lots, per bl.....	3.00 to 3.25
Bay of Islands, Split.....	none
Round.....	none
ALEWIVES, per bbl.....	3.00 to 3.25
CODFISH.	
Hard Shore.....	4.25 to 4.50
Bank.....	4.00 to 4.25
Bay.....	4.00 to 4.25
SALMON, No. 1.....	18.00 to 19.00
Haddock, per qtl.....	2.75 to 3.00
HAKE.....	2.00 to 2.25
Lusk.....	2.00 to 2.25
POLLOCK.....	1.50
HARK SOUNDS, per lb.....	1 1/2
COD OIL A.....	26