

It is said that Messrs. James Ross, of Montreal, and George Gooderham and Geo. A. Cox, of Toronto, are associated with a syndicate of English capitalists in the scheme to build a very large and palatial hotel in this city in which \$1,500,000 will be invested.

A company is being promoted for the establishment of a meat packing factory at Weston, a suburb of Toronto, to be called the Canadian Meat Market Company, who will prepare all kinds of meats for both foreign and domestic consumption. It is proposed to utilize the old woolen mill and site at Weston for the business.

The following building permits have been issued by the Toronto city authorities:—To A. B. Ormsby, to erect a two-storey brick addition to the workshop at 126 Queen street east, at a cost of \$1,150; M. S. Robinson, for a four storey brick addition in the rear of the Bijou theatre, to cost \$26,000; trustees of the House of Industry, to erect two brick additions of two storeys each to the House of Industry on Elm street, to

cost \$15,000; M. Stanton & Co., for enlargement of their wall paper factory, 946 Yonge street, to cost \$2,500; Charles S. Miller, to build a one-storey brick addition to the Kirby House, corner of Queen and William streets, to cost \$400; Geo. H. Hees & Co., for three-storey brick factory, on the south side of Pears avenue, near Avenue Road, to cost \$9,000; Geo. H. Hees, for a three-storey brick warehouse, alongside the factory, to cost \$7,000; the city of Toronto will build a one-storey brick addition to the Yonge street firehall for an engine-house, at a cost of \$600.

A. C. NEFF, Chartered Accountant. JAMES WOOD, Late Sec. The T. Eaton Co., Ltd.
NEFF & WOOD
PUBLIC ACCOUNTANTS, AUDITORS
ASSIGNEES, ETC.
Room 500 McKinnon Bldg., Toronto

GEORGE WHITE-FRASER.

Member Can. Soc. C.E.
Member Am. Inst. Elec. Eng.

CONSULTING and Electrical Engineer.
CONSTRUCTING
Railways, Lighting, Power Transmissions,
Factory Plants, Reports, Specifications, Tests.
18 Imperial Loan Building,
TORONTO.

H. F. STRICKLAND,

Electrical Contractor.

77 ADELAIDE ST. E., TORONTO.
Telephone 1838.

SPECIALTY:—Electric Wiring, by skilled men.
All work done according to latest methods, at lowest possible prices. Complete Isolated Plants.

To WOOLEN CLOTH Manufacturers
and Wool Dealers.

SYKES, HOLT & CO.

Wool Brokers, SYDNEY, N.S.W.

We undertake the buying of Washed and Greasy Wools in all the Australian markets on the lowest terms.

Orders executed strictly to instructions.
Samples and all information will be forwarded on application.

BANKERS—The Union Bank of Australia, Limited, Sydney.

REFERENCES—J. S. Larke, Esq., Agent Govt. of Canada in Australia.

ROBT. A. ROSS, E.E.,

Consultant to Canadian Pacific Ry.,
and Boiler Inspection Co.

CONSULTING ENGINEER.

Specifications, plans, advice upon Steam and Electric Plants, Power transmission and distribution. Special machines designed.

17 St. John Street, MONTREAL.

SPORTSMEN

NOTE

The ABBEY IMPROVED CHILLED SHOT

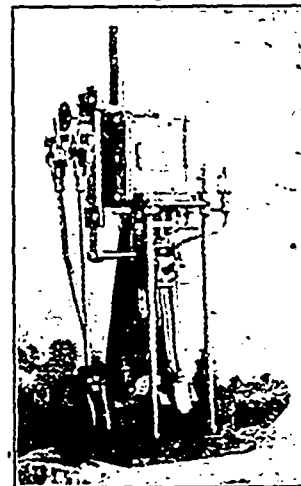
NEWCASTLE-ON-TYNE, ENGLAND.

Is made by a New Process, and is highly spoken of by Sporting Purists and Sportsmen. Kills at greater distance than Soft Shot.
Send to your Gunmaker for Samples.

JOHN J. GARTSHORE,
13 Front St. West, Toronto.
RAILWAY, TRAMWAY, and
Contractors' Supplies
METALS and SCRAP IRON
Bought and Sold.

ALBERT BELL ENGINE WORKS

DUNNVILLE, ONT. Makers of
YACHT ENGINES, 1 H.P. to 50 H.P.
Safety Water Tube BOILERS
PROPELLER WHEELS
Stationary Engines and Boilers



WRITE FOR CIRCULARS

FLEMING & CHAPIN, **TAPES** Common Superfine Extra Superfine
229-231 Church St.,
PHILADELPHIA.

CARBONIZER A neutral substance, harmless to animal fibre or tissue, while it destroys burrs, etc., as efficiently as acid. It leaves the wool in fine condition. Manufactured by the Merrimac Chemical Co., 13 PEARL ST. BOSTON.

BOILERS.

YOU WANT THEM. WE MAKE THEM

WRITE FOR PRICES

BANNERMAN & FINDLATER,
Boiler Makers, OTTAWA, ONT.

WANTED

Mechanics, Engineers and Firemen to enclose 20 cents in stamps for Working Model of Valve for Steam Engines.

Address, H. F. LOWE, M.E.,
Patent Solicitor,
Confederation Life Bldg., Toronto, Canada.

PATENT FOR SALE.

Canadian Patent No. 53178, relating to apparatus for rapidly discharging cargo from vessels, whereby the necessity of shovelling grain, coal, etc., in small quantities is avoided. Apply to

JOHN W. GLAHOLM,
Nanaimo, B.C.

J. ALEX. CULVERWELL,
Electrical and Mechanical
BROKER,
Special Agent Royal Victoria Life,
5 King Street West, - - TORONTO.

SOUTH AFRICAN EXHIBITION

A gentleman who has been in South Africa, would attend the Exhibition to be held at Grahamstown, South Africa, during December, 1898, and January, 1899, in the interests of two or three Canadian Manufacturing firms. The object being to minimize the cost of representation to each firm.

Only one in each line will be taken.

Address, "SOUTH AFRICA,"

CARE CANADIAN MANUFACTURER,
Toronto.

Canadian Goods for New Zealand

To CANADIAN MANUFACTURERS

Our Mr. YEREX—a Canadian—but for the last 10 years a resident of New Zealand, will arrive at Vancouver by the "Aorangi" on August 11th, and will proceed eastward, touching at the leading towns en route. He leaves the same port again by the same steamer on November 17th, and while in Canada would like to make arrangements to represent any firm or firms who wish to have their goods introduced to the New Zealand public.

We have had 8 years experience in importing American Manufactures, and we think we understand the New Zealand market.

REFERENCES: The Union Bank of Australia, Limited, Wellington; J. S. Larke, Esq., Agent for the Government of Canada, Sydney, N.S.W.

The YEREX & JONES CO.

HEAD OFFICE—Wellington, New Zealand.
BRANCHES—Dunedin, Christchurch, Wanganui and Napier, New Zealand.

Agencies throughout the Colony.
Address at once GEO. M. YEREX, care of THE CANADIAN MANUFACTURER, Toronto, up till October 1st.

TORONTO MACHINE SCREW CO.

Manufacturers of



Hexagon
AND
Square
Head Cap
Screws.

Steel and Iron
Set Screws,
Hanger and
Plunger Bolts,
Studs, etc.

Send for Price List
and Discounts.

109 1/2 Adelaide St. W., - TORONTO.