

current year: President, Hon. S. W. Foster; Vice-President, E. H. Fitzhugh; other directors: C. M. Hays, W. H. Chaffee, A. H. Moore, J. P. Noyes, E. Stevens, G. E. Robinson; Secretary-Treasurer, C. H. Parmelee; Assistant Secretary-Treasurer, W. H. Chaffee. The line is leased for 99 years to the Central Vermont Ry., and no report is issued, the annual meeting being a mere formality.

Temiscouata Ry.—Gross earnings for Sept., \$11,720.46, making for nine months ended Sept. 30, \$102,978.35.

Toronto, Hamilton and Buffalo Ry.—Gross earnings for Oct., \$61,772.31 against \$55,482.14 for Oct., 1903; making for five months ended Oct. 31, \$278,500.34, against \$251,748.23 for same period, 1903.

Toronto Ry.—Car earnings for Oct., \$202,344.03, against \$183,810.09 for Oct., 1903; making for ten months ended Oct. 31, \$1,999,738.58, against \$1,781,285.50 for same period, 1903.

Victoria and Sidney Ry.—The officers for the current year are: President, Jno. Hendry,

TO THE WORLD'S FAIR ST. LOUIS —OVER THE— WABASH LINE

The World's Fair is a grand success. In all probability, none now living will see anything of its character approaching it in grandeur and magnitude, and the great Wabash is the best route to go by, because it saves many hours of travel and lands passengers right at the main entrance World's Fair grounds before going to Union Depot. Excursion tickets on sale daily until Dec. 1st. Passengers leaving Toronto on evening trains arrive at World's Fair grounds next day at noon. For time-tables, descriptive folder, address

J. A. RICHARDSON

District Passenger Agent

North-East Corner King and Yonge Streets,
TORONTO

E. L. DREWRY REDWOOD BREWERY WINNIPEG, MANITOBA.

MANUFACTURER OF THE
CELEBRATED

**REFINED ALE,
EXTRA STOUT AND
REDWOOD LAGER.**

ALSO THE . . . **GOLDEN KEY BRAND
AERATED WATERS.**

CANADIAN NORTHERN RAILWAY

THE NEW CANADIAN HIGHWAY FROM PORT ARTHUR, THE
HEAD OF LAKE SUPERIOR, TO—

**FORT FRANCES
WINNIPEG
PORTAGE LA PRAIRIE
BRANDON**

**MORRIS
EMERSON
CARMAN
HARTNEY**

**GLADSTONE
NEEPAWA
DAUPHIN
SWAN RIVER**

Line surveyed and now under construction to:—

PRINCE ALBERT

BATTLEFORD

EDMONTON

FREIGHT:—Shipments are handled from points in Eastern Canada, either Grand Trunk or Canadian Pacific Railways, via North Bay to Port Arthur, thence Canadian Northern Railway.

PASSENGER:—Passengers destined to points on the Canadian Northern Railway north, south and west of Winnipeg, can purchase through tickets via Chicago and St. Paul, where connection is made with the Canadian Northern Flyer for Winnipeg via Great Northern Railway, also with Northern Pacific Railway.

Freight Rates, Folders and other Information furnished on
application to:—

R. H. BELL, T. F. & P. A., Board of Trade,
MONTREAL, QUE.

WM. PHILLIPS, G. E. A.,
TORONTO, ONT.

GEO. H. SHAW, Traffic Manager,
WINNIPEG, MAN.

N. CURRY, President.

N. A. RHODES, Vice-President.

J. M. CURRY, Sec.-Treas.

CAPITAL, \$1,000,000.

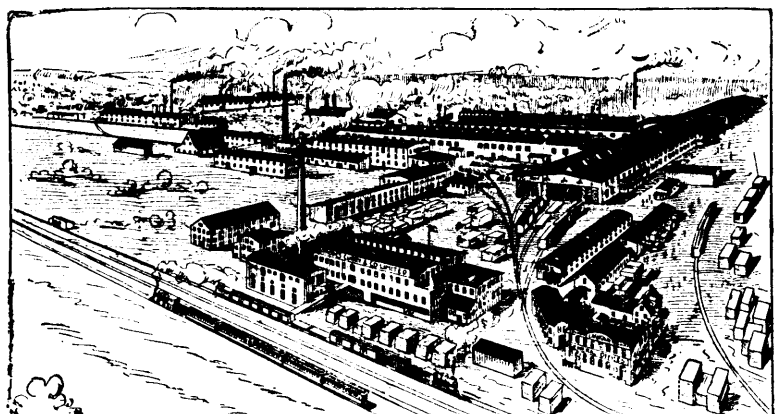
RHODES, CURRY & CO.

AMHERST, NOVA SCOTIA

LIMITED

RAILWAY and STREET CARS

Special Cars for All Purposes.



Car Wheels, Axles, Forgings, Castings, Etc.

CAPACITY PER MONTH

300 Freight Cars	4 Passenger Cars	4 Snow Plows	3,000 Car Wheels
2,500 Car Axles	500 tons Castings	1,000 tons Forgings	