

THE FERN MINE'S CLEAN-UP.

On Monday, 18th November, Messrs. F. C. Innes and J. A. Veatch brought to Nelson from the Fern mine on Morning mountain, five bricks of gold bullion as the result of the first mill run of the mine. The bricks were deposited in the Bank of Montreal, and the value placed at \$11,325.

Mr. Innes furnishes the following report of the 38 days' run to November 13th: Bullion shipped, \$11,325; bullion on hand, \$670; concentrates shipped, 20 tons; net smelter returns, \$1,500; six tons of concentrates on hand, \$350; total product of the mill, \$13,945; ore shipped, 20 tons; net returns, \$1,200; making a total of the mine and mill for the 38 days, of \$15,145. The total number of tons milled was 965, or an average of 25.4 tons per day. The segregation of values recovered is as follows: The first five days, 30 tons per day, making 150 tons at \$8 per ton, \$1,200; succeeding 10 days, 25 tons per day, 250 tons at \$9 per ton, \$2,250; the next 10 days, 24 tons per day, 240 tons at \$14 per ton, \$3,360; the next 13 days, 25 tons per day, 325 tons at \$21.55, \$7,135. The average duty per stamp in 24 hours was \$12.43. The average value of concentrates per ton milled was \$2.02. The estimated cost of mining and milling per ton was \$4.50. At the latter figure the total cost of mining and milling for the 38 days amounted to \$1,342.50, leaving a balance to the credit of the mine of \$10,802.50.

The bricks left at the bank run in value from \$16.05 to \$17.01 per ounce. The brick designated as No. 1 was a fair sample of the others, weighing 198.44, and valued at \$16.39 per ounce. The percentages of metal contained were as follows: Gold, 788.8; silver, 162.2; base, 19.

It is the intention of the company to at once construct a cyanide plant to work the tailings, and it will probably be in operation early in December. Ten extra stamps have been ordered and they will be in operation soon after their arrival, as everything is in readiness for them. An electric plant is being added, and everything is being done that will tend toward the rapid and economical handling of the ore. At present 28 men are on the regular force, and 14 on construction. This number will be largely increased when the extra stamps and cyanide process are established. A large amount of ore has been blocked out, and the outlook for a long and successful run is very bright.

NELSON'S EXPORTS.

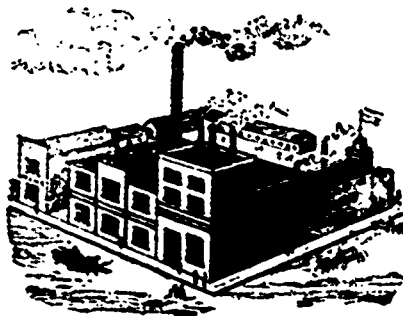
The ore and matte exports of Nelson and its suburbs for the first thirteen days of the present month, amounted in value to \$382,570, or nearly \$30,000 a day, an excellent average showing that will doubtless, however, be exceeded ere the end of 1897, and far surpassed by the records of 1898.

THOS. DUNN & Co., LTD.

Direct Importers of

ENGLISH, GERMAN & AMERICAN**HARDWARE****TINWARE AND GRANITEWARE.**

Special attention paid to Miners' and Contractors' Supplies, and we are prepared to quote prices that will interest you. If in either of these businesses let us figure with you. We can save you money. Orders by mail solicited.

8, 10 & 12 CORDOVA STREET, VANCOUVER, B.C.**DOERING, MARSTRAND & Co.****(LIMITED)****Alexander Lager****EXPORT****KEGS AND BOTTLES****PORTER****POST OFFICE, MOUNT PLEASANT, VANCOUVER, B.C.****TELEPHONE 249****Free Delivery to all Parts of the City.**