

JOEL'S PORTABLE MILL

Is a wonderful combination of a Flour Mill, a Crusher, a Grinder, a Cleaning and a Sifting Machine, and requires but two to four Horse Power

It forms a complete MILLING PLANT, built on the principles applied in large modern mills—THE ROLLER SYSTEM.

FOR MAN—It produces all grades of flour, from the coarsest to the finest household flour.

FOR ANIMALS—It produces the best form of foods, viz.—crushed or ground grain, with all its nutritive and fattening qualities.

It is the only Flour Mill, Grinder and Crusher combined, built for CAPACITY AND QUALITY OF PRODUCT, portable or fixed, AT POPULAR PRICES.

QUALITY OF PRODUCT results from its marvelous grain cleaning devices and SELF-ADJUSTABLE SIEVE BRUSHES.

CAPACITY AND ECONOMY of operation result from the adaptation of the ROLLER SYSTEM with partly fluted and partly smooth rollers.

In communities where conditions do not warrant the individual use of the JOEL'S MILL, its portability meets the case.

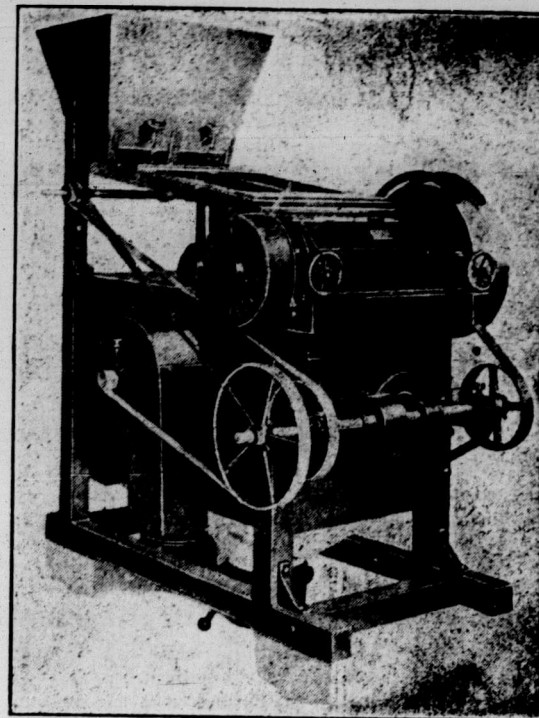
Where small or large power is used for industrial or dairy purposes, the JOEL MILL fills a gap and will add considerable revenue to the operators without additional expense, while adding to the comfort and advantages of the surrounding section.

THE JOEL MILL is the last and crowning link in the marvelous chain of implements and machinery that make the farmers independent and self-sustaining.

THE JOEL MILL is completing its circuit of the world, and we can produce the highest testimonials from Switzerland, France, Germany, Austria, Italy, Russia, South Africa, Transvaal, Brazil, Chile, etc. THE JOEL MILL IS BUILT TO LAST AND SOLD UNDER A GUARANTEE.

Reliable representatives wanted in every district. Write for our Special Dealer's Proposition.

Ask for descriptive Catalogue, sent Free on application.



BOURNIVAL & CO. MANUFACTURERS AND MANUFACTURERS' AGENTS

333-337 NOTRE DAME STREET EAST

MONTREAL, CANADA

Co-operation

THIS is the age of co-operative buying. Send us your address and let us tell you how to buy, by this plan. The Flour that is always good.

Daily
Capacity
300 Barrels

ECHO MILLING COMPANY
GLADSTONE, MAN.



EARL GREY ON PARASITES

The ninth congress of the International Co-operative Alliance opened in Glasgow on Monday, when 600 delegates attended, representing over 20,000,000 members of 130,000 co-operative societies among twenty-four nations. The proceedings were conducted in three languages—English, French and German.

In his inaugural address in the St. Mungo Halls Earl Grey, president of the alliance, said the application of the co-operative principle to their industrial life had proved that by the substitution of co-operative transportation and marketing for individual selling, and of co-operative use of power for the individual use of expensive machinery, the wants of both producer and consumer can be met more effectively and at less cost.

Co-operation meant the elimination of every unnecessary middleman. Every middleman could not be conceived in any other light than that of a parasite. Our present industrial organization was responsible for such selfishness, suspicion, hatred, and consequent inefficiency, with its sequel of poverty and discontent, that the wants of society could never be adequately met so long as the twin forces of capital and labor were warring against each other within the bosom of a single state. Co-opera-

tion showed how the warring forces of labor and capital could be reconciled with advantages to all concerned.—Overseas Daily Mail, Aug. 30, 1913.

CANADIANS CONSUME MOST WHEAT

The consumption of wheat has been estimated for various countries, with results as given in the accompanying tabulation. The estimates are based upon the average production for 10 years, exports or imports of wheat, including wheat flour reduced to wheat equivalent and exclusive of that used for seed. Canada is easily in the lead, an average Canadian using nineteen times as much wheat as a Japanese in his native country. The figures are:

	Bushels
Canada	9.5
Belgium	8.3
France	7.9
Spain	6.1
United Kingdom	6.0
Switzerland	6.0
Australia	5.5
Italy	5.4
United States	5.3
Uruguay	5.3
Argentina	5.2
Bulgaria	5.0
Austria-Hungary	4.8
Netherlands	4.2
Roumania	4.0
Denmark	3.5
Chile	3.4
Germany	3.2
Russia	2.7
Servia	2.5
Sweden	2.5
Egypt	2.5
Portugal	1.8
British India	.8
Mexico	.8
Japan	.5

Various conditions affect the accuracy of such estimates; the amount to be deducted for seed can be only roughly approximated, for, while data of wheat acreage are regularly published, the amount of seed used per acre in the different countries is not definitely ascertainable. The degree of accuracy varies considerably for the different countries; for instance, the estimate for such countries as England, France, and most countries of Western Europe, are probably within 3 per cent. of the truth, whereas for Mexico and Egypt the estimate may be as much as 25 per cent. wide of the mark. The figure given for the United States may be an under-estimate of 2 to 4 per cent. Generally, however, it is believed that most of the figures are less than 10 per cent. in error.—Exchange.

The honors which a man enjoys should always be measured by the means he employed to secure them.

If thou be ignorant, endeavor to get knowledge. If thou hast attained knowledge, put it into practice.—Quarles.

MacLennan Bros. Limited, Winnipeg

Wheat, Oats Car Lots Option Flax, Barley Trading

NET BIDS Wired on Request CONSIGNMENTS Sold to the Highest Bidder

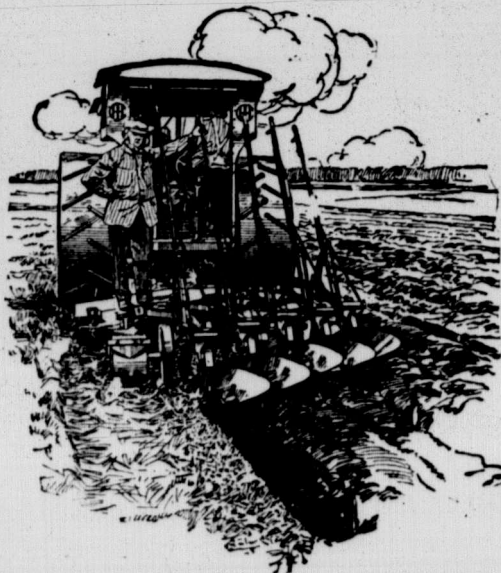
Agents wanted at every point where we are not represented. Write at once for terms

Oliver Plows Make Well-Plowed Fields

GOOD plowing consists of turning each particular soil to just the depth and in just the manner that soil requires. A well-plowed field has no air spaces between seed bed and subsoil. The plowing is deep enough to turn up fresh soil to be aerated and prepared for crop growing. The plow should break up and pulverize the soil as much as possible. These points are fully covered by the work of Oliver plows. Whether your soil be clay, gumbo or loam; gravelly or sandy, there is an Oliver plow made to turn it properly.

Oliver Plows Tractor-Gang or Horse-Drawn

are the result of fifty-seven years experience. Tractor-gangs are built up of 4, 5 and 6-base sections, flexibly joined, so that they follow the lay of the land and plow, rolling fields to an even depth. The bases are set or lifted easily while the plow is moving. The levers have double latches, allowing either or both hands to be used. A strong 18-inch rolling coulter can be set to lift the entire plow base over a stone or other obstruction. The platform gives the operator unrestricted passage to the lever controlling any base. The Oliver No. 1 gang plow is a horse-drawn plow, designed especially for use in Western Canadian fields. When plowing with an Oliver No. 1 gang the load is equalized at a point between the beams, which brings the draft strain equally on each beam. Four horses can work abreast, all of them walking on unplowed ground



The I H C local agent will show these and many other advantages of Oliver plows, tractor-gang, horse-gang and walking. He will supply you with catalogues and literature, or, write the nearest branch house.

International Harvester Company of Canada, Ltd

WESTERN BRANCH HOUSES

At Brandon, Man.; Calgary, Al.; Edmonton, Alta.; Estevan, Sask.; Lethbridge, Alta.; North Battleford, Sask.; Regina, Sask.; Saskatoon, Sask.; Winnipeg, Man.; Yorkton, Sask.

These plows are made at Hamilton, Ont.



Was
estima
Americ
their i
able to
next
govern
law.

So f
cerned
tically
tariff l
will ne
first re
the in
March
are ma
citizens
31, and
for mo

Ever
residen
\$3,000
income
his or l
ment
The es
that th
298,000
To this
more pr
tax whi

The i

Incon
\$3,000
\$5,000
\$10,000
\$15,000
\$20,000
\$25,000
\$50,000
\$75,000
\$100,000
\$250,000
\$500,000
\$1,000,0

Totals

Presid
of the s
now hol
stage or
are the c
from th
Presiden
made ex
the cons
successor
to pay t

Ex

In fig
taxpayer
after de
\$4,000 if
claim the
Necess
business
or family
Interes
Nation
municipa
Trade
not over
Worthl
year.

A reas
preciatio
Divide
come has
Interes
ernment

The an
agreed u
\$20,000,
\$50,000,
3 per cer
cent.; \$10
\$250,000
\$500,000,

MEXIC

E

Mexico
were sent
today to
Mexico i
effect tha
and that
according
All tha
ing to th
large gar
and main
for the fi
was given