

The Wonderful **GILSON**



The Lightest Running Blower Cutter Made.

HYLO SILO

"Everyone Said We Couldn't Do It"

Writes J. Geldner, of Kitchener, Ont. He further adds: "We filled and re-filled a 12-ft. x 49-ft. silo in 16 1/2 hours with a 6 h.-p. Gilson and an N-13 Gilson Cutter. The outfit also made a record in cutting straw, at the rate of five loads an hour."

**F**ILL your silo with your own Gilson Silo Filler and your own or your neighbor's engine. Our 10" Gilson Cutter can be operated successfully with a 4 or 6 h.-p. engine. No bands to cut. Two larger sizes are for 8 h.-p. to 20 h.-p. You need one of these cutters—it will pay for itself the first season.

With a Gilson Cutter you can cut your own corn just at the right time,—doing all the work in a day or two and refilling without expense when the silage has settled.

"Surprised the Whole Community"

Writes J. K. McLennan of Dalkeith, Ont. "With out 0-10 Gilson Cutter and 4 h.-p. Gilson Engine we filled and re-filled three silos, sizes 14 ft. x 25 ft., 12 ft. x 25 ft. and 13 ft. x 25 ft. in six days."

**GILSON SILO FILLERS**

The Gilson Silo Filler is built for many years of service. It is made entirely of iron and steel, excepting the feed table. All five main bearings are a part of the one-piece semi-steel frame,—insuring perfect alignment of the wheel and knife for all time. The power is applied direct to the cutting wheel,—no chains.

The patented safety reverse makes accidents practically impossible. The drum is made of steel,—not dangerous cast-iron. The wheel is indestructible,—steel bound,—with no breakable parts such as spokes or bosses. It runs at slow speed—600 to 800 r.p.m.

Write for free silo filler book. It tells the Gilson story from start to finish,—points out the advantages of the design, and describes the all-metal construction in such a way that you will understand why our machine cuts and elevates to UNUSUAL HEIGHTS at SLOW SPEED with LIGHT POWER. This is a matter of dollars and cents to you. Send for your copy of this book to-day,—learn all about the "WONDERFUL GILSON" line of silo fillers.

Beware of Imitations and Infringements.

**GILSON MFG. CO., LTD.**

119 York St., Guelph, Ont., Canada

"Will silo-filling time find YOU ready?"

GILSON MFG. CO. Limited  
119 York St. Guelph, Ont.

Gentlemen: Kindly send me free catalogues as checked.

- Ensilage Cutter
- Silo
- Engine

NAME.....

ADDRESS.....

DATE.....

Clip out the Coupon and mail to-day

**GILSON SILO FILLERS**

THE GILSON SILO FILLER is the one blower which can be successfully operated with as little power as 4 h.p. There is a Gilson Silo Filler for every purpose—for the individual farmer, for the syndicate, and our large capacity machine for the custom jobber.

We guarantee every Gilson Silo Filler to cut and elevate more ensilage with the same power than any other blower cutter.

Will Silo Filling Time find you ready?

Write for catalogue to-day.

Gilson Mfg. Co. Ltd.  
399 York St., Guelph, Ont.



"GOES LIKE SIXTY" We Want to Demonstrate on Your Farm



We will send a Gilson engine, any size, without charge, to any responsible farmer in Canada to try out on his own farm, at his own work.

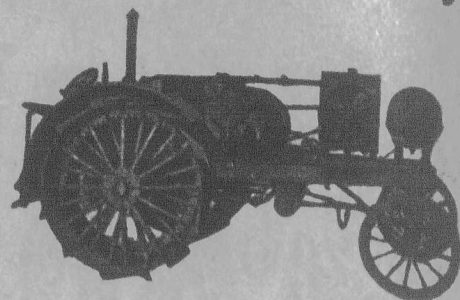
Write for further particulars of free trial offer, catalogue, and special introductory prices.

**Gilson Mfg. Co. Limited**  
269 York St., Guelph, Ont.

**PATENTS** Trade Marks and Designs Procured in all Countries. Special attention given to patent litigation. Pamphlet sent free on application.  
**Ridout & Maybee** Crown Life Bldg. Toronto, Ont.

**Patent Solicitors—Fetherstonhaugh & Co.** The old-established firm. Patents everywhere. Head Office: Royal Bank Building, Toronto. Ottawa Office: 5 Elgin St. Offices throughout Canada. Booklet free.

The Waterloo Boy



The Three-Plow Tractor for Ontario. The Tractor that makes good. The Tractor that has stood the test. The Tractor that is guaranteed under all conditions.

Write for free catalogue, prices and any information wanted.

**THE ROBERT BELL ENGINE & THRESHER CO., LIMITED**

Selling agents for Ontario. Seaforth, Ont.

Food Will Win the War

Serve your country and yourself by raising FOOD on the fertile plains of Western Canada. The Canadian Pacific Railway makes it easy for you to begin. Lands \$11 to \$30 an acre; irrigated land up to \$50, 20 years to pay. Loans to assist settlers on irrigated lands. Get full particulars and free illustrated literature from

G. A. Muddiman,  
Land Agent, C.P.R.  
Montreal, P.Q.

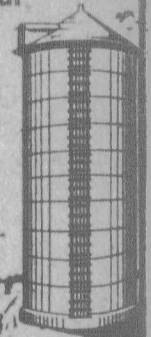
**HYLO SILO**

Sweet Fresh Ensilage down to the last forkful

THE HYLO SILO is perfectly air-tight. No frozen or spoiled ensilage around the walls. Convenient and perfect fitting doors, adjustable without hammer or wrench. Blade of Guaranteed Long Leaf Yellow Pine. Built to last a life-time. Stands rigid when empty.

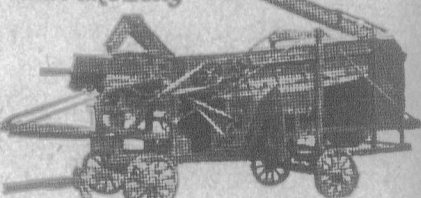
Write for prices and catalogue. AGENTS WANTED.

Gilson Mfg. Co. Ltd. 49 York St. Guelph (4)



The Wonderful—Light-Running Gilson Thresher

"Goes like Sixty"



Saves Time—Money—Labor. Be independent of the gang. Keep your farm free of weeds. Do your threshing when you please, with a 6 to 12 h.p. Engine and the Wonderful Light-Running Gilson Thresher. Furnished with or without Blower. Send for full particulars.

**GILSON MANUFACTURING COMPANY LTD.**  
489 York St., Guelph, Can. 48

**GILSON CONCRETE MIXER**



The ideal small Concrete, Plaster and Mortar Mixer, hand or power. Built in three sizes. Smallest size 2 1/2 cu. ft. per batch—mixes in two minutes—capacity 25 cu. yds. per day. Price on skids without engine, \$75 3/4 ft. with engine and housing on truck, \$195. Send to-day for Concrete Mixer Bulletin No. 40.

**GILSON MFG. CO. Ltd. Guelph, Ont.**