

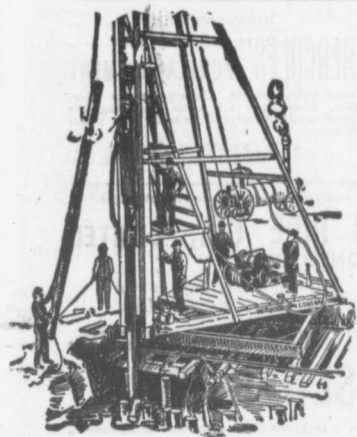
The Canadian Bridge Co., Limited

WALKERVILLE, ONT.

MANUFACTURERS OF

RAILWAY AND HIGHWAY BRIDGES

Locomotive Turn Tables,
Roofs, Steel Buildings and
Structural Iron Work of all descriptions



Pile Driving

on land or water by Steam Pile Drivers or Drop Hammers.

Portable Boilers, Hoisting Engines, Pumping Machinery
To Let—Bridge Building, Trestle Work
Wharves, Dams, Diving Submarine
Work and General Contracting.

WM. HOOD & SON
10 Richmond Sq. - MONTREAL

CANADIAN EMPLOYMENT AGENCY

Licensed Labor Contractors

.. 182½ St. Antoine Street ..
MONTREAL

All classes of labor, skilled and otherwise
supplied at short notice.
Special attention given to gangs for construction, lumber camps, etc.

All Orders given Special Attention.

The Ontario Accident Insurance Co.

ACCIDENT, EMPLOYERS, ELEVATOR
AND GENERAL LIABILITY

194 St. Francois Xavier St Montreal

Established 1898

The Hanover Portland Cement Co., Ltd.
Hanover, Ontario

Manufacturers of the Celebrated

"SAUGEEN" Brand of PORTLAND CEMENT

Prices on application.
Prompt shipments.

For Contractors, Switches, Girders, &c.
New and Second Hand.
RAILS LOCOMOTIVES AND CARS

John J. Gartshore

83 Front St. West,

(Opposite Queen's Hotel.) TORONTO

WIRE ROPE

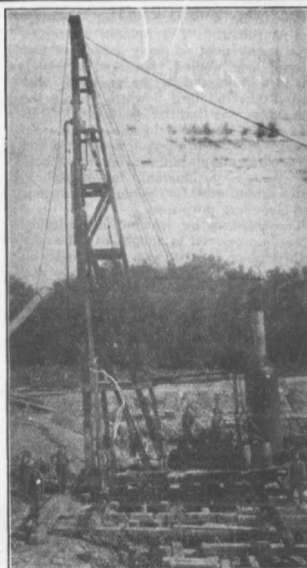
"ACME" brand

Highest grade of hoisting rope made. Extra tensile strength for heavy work. One strand painted green, look for it.

Use Greening's Rope Grease for Lubrication

THE
B. GREENING WIRE CO., LIMITED

HAMILTON, ONT. MONTREAL, QUE.



PILE DRIVING

and Foundation Work.

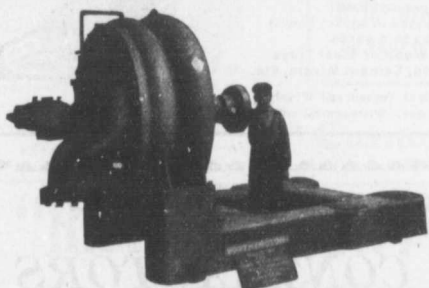
By 5-ton Automatic Steam Pile Hammer, Water Jet or Drop Hammers, Dock Building, Submarine Work and Dredging.

BUILDING MOVER AND WRECKER
General Contracting.

JNO. E. RUSSELL, - Toronto
Residence, 1010 Queen St. E.—Phone M. 4656
Office and yard, 307 Logan Ave.—Phone M. 2007

WORTHINGTON PUMPS

FOR WATER WORKS SERVICES



Worthington 2 Stage Turbine Pump for the Winnipeg Water Works, Capacity 5,000,000 per 24 hours.

We Have Two Stage Pumps in Operation Delivering Against 160 Pounds Pressure

"WORTHINGTON" TURBINE PUMPS

for heads up to 2,000 feet, are
Reliable, Durable, Efficient
and exceedingly simple

WE ALSO MANUFACTURE

Boilers, Tanks, Filters
Etc.

The John McDougall Caledonian Iron Works Co.,

ESTABLISHED 1852

Montreal.

Limited.