

1904

street

lagher chased i town. atoir. veneer

Cereal build a Phee & g plans t to be

C. Mc-bids up 300 de-stem of s issued rks.

Attinger, invites on of tance of for con-1 water

Filson & ers on a William ders ap-erations R. Mc-

is Mills, r a jam ona.—It re Fence remove l build a ft.

uchanan on Grant ding on ddall will oldie & uld new 300 feet

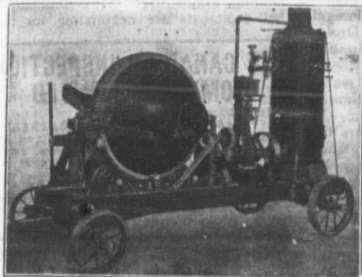
L. Wide-May 3rd over the ft. long, concrete ge 300 ft. Winter-

Tenders secretary-construct-ross the er. Plans hour and engineer,

e Victoria this place, tiway and The plans the H. I. on. The 1 264 feet out 3,000 be used nd sides.

T. — The asking for truction of application er; H. A. ding, Tor- Clerk of the Depart- l. Chreque tender.

he Herring incorora-Hon. C W. N. Sumner. n A'ma to -The Twin



WE FURNISH SMITH MIXERS
 MOUNTED ON SKIDS
 MOUNTED ON TRUCKS
 MOUNTED WITH BELT PULLEY ONLY
 MOUNTED WITH STEAM ENGINE AND BOILER
 MOUNTED WITH ELECTRIC MOTOR
 MOUNTED WITH GASOLINE ENGINE

BUILT TO LAST

THE SMITH CONCRETE MIXER

Is the Most Simple and Durable Concrete Mixer. Its Few Working Parts are Naturally Protected from Sand and Grit and the Materials Used Throughout are the Highest Grade. The Smith Stands the Wear and Tear of Uninterrupted Service in a Manner which Places it at the Head of Its Class. It Can Be Had in Capacities of from 50 to 500 Cubic Yards of Thoroughly Mixed Concrete Per Day.

W. H. C. MUSSEN & CO.

763-765 Craig Street

RAILWAY, MINING AND CONTRACTORS' SUPPLIES

MONTREAL, P. Q.

Free Mines Railway Co. has applied for a charter, to build a railway from Twin Free Mines to Gloucester Junction. The promoters include George Gilbert and P. J. Burns.

ST. THOMAS, ONT.—N. R. Darrack, architect, wants tenders by 30th inst. for office building for Southern Loan & Savings Co.—A new cement dam will be built at the waterworks.—The Separate School building will be remodelled during the Summer holiday, at a cost of \$6,000.—The Canada Iron & Foundry Co. will erect a new foundry on corner of Talbot and First Ave.—Thomas Bros. have decided to build a large number of houses.

LONDON, ONT.—H. C. McBride, architect, is preparing plans for a church at Waterloo and a residence at Woodstock, and is making alterations to the Dominion House in this city.—Matthews & Murray, architects, are making plans for a residence for A. Sreaton.—The bridge over the Thames river at Byron will be replaced by a new structure, but no definite action is likely to be taken before the County Council meeting in June.

TORONTO JUNCTION, ONT.—T. Sheppard, of Tottenham, will build a large store on corner of Dundas and Medlanad streets in this town.—The Arena Company, of Toronto, has been formed to build a \$50,000 arena on the Union Stock Yards premises. A. P. Westervelt is provisional secretary.—Joseph Smith intends building twelve houses on Annette Street.—J. A. Ellis, architect, has completed plans for addition to Western avenue school.

COLLINGWOOD, ONT.—Philip C. Palin, architect, has prepared plans for the following buildings: Brick and cement terrace of three houses on Third Street for James Shearer; brick residence on Beech street east for Alex. Mulholland; extensive alterations to the General Marine Hospital, including a new wing 40x100 ft., new operating room, elevator, etc., alterations and additions to residence of M. Gaviller, and alterations and additions to residence of James Hisey at Creemore, Ont.

OTTAWA, ONT.—The President of the University of Ottawa is asking for tenders up to April 23rd for construction of arts building, from plans prepared by A. O. Von Herbulis, architect.—The Separate School Board propose to raise \$60,000 for new school buildings and additions to present building.—It is under-

Portland Cements

Highest Grade

Canadian, German, English and Belgian

DRAIN PIPES and Connections of all kinds.
 PAVING BRICKS, ENAMELLED BRICKS,
 FIRE BRICKS, FIRE CLAY, Etc., Etc.

F. HYDE & CO.,

31 Wellington Street

MONTREAL

STEEL MOULDS

Latest Improved Making 4' to 8'

CONCRETE TILE

All kinds of ROAD MAKING MACHINERY and CONTRACTORS' SUPPLIES.

SAWYER & M'ARSEY CO., Limited
 Hamilton, Canada.



Moulds and the Tile they make.

Portland Cement...

HIGH GRADE GERMAN BRANDS FOR GRANOLITHIC AND ARTIFICIAL STONE SIDEWALKS.

Sewer Pipes, Best English Cements. Best Belgian Cements
 Culvert Pipes, &c. W. McNALLY & CO., Montreal

MOUNTED ON TRUCKS OR SKIDS
 WITH AND WITHOUT POWER
 MECHANICALLY PERFECT

THE RANSOME MIXER

Gives the Best Results

Send for Circular R.

JAMES COOPER
 MONTREAL

WORKS QUICKLY
 MIXES THOROUGHLY
 NO PARTS TO GET OUT OF ORDER
 SIMPLE OPERATION