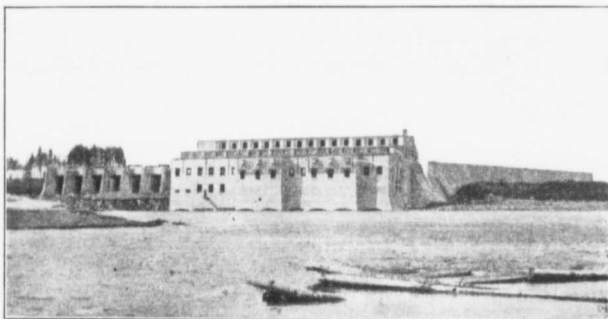


charged shall be subject to control. Finally, the rentals charged the licensee, no site being sold outright, are fixed with the idea of aiding the development over its early years, and later, consistent with cheap rates to the consumers, securing a reasonable payment to the public treasury for the use of a public natural resource.

Half-Million Horse-Power at Winnipeg's Doors

Probably the immense importance to Winnipeg and district of the Winnipeg River power can best be realized by a brief recital of the various interests affected. The total peak load of Greater Winnipeg on the City and the Street Railway Company's power stations was 64,300 horse-power in 1914. The population was 276,177, there were 418 factories actually using this power having \$53,000,000 capital invested, 18,500 employees drawing \$11,250,000 wages and turning out a product valued at \$45,000,000 per year.



WINNIPEG RIVER—POINT DU BOIS
CITY OF WINNIPEG MUNICIPAL DEVELOPMENT

In 1915 we find that the interests of all kind owning or using Winnipeg River power in Greater Winnipeg or Selkirk, but excluding institutions and domestic supply, had \$169,680,000 capital invested, employed 30,828 persons with an annual pay-roll of \$24,110,000 and turned out a product valued at \$135,600,000.

We see that in 1914 the total **peak** load was only 64,300 horse-power while there is still undeveloped a total of 268,600 continuous horse-power at ordinary minimum and 272,700 horse-power with regulated flow, while there would be a **peak** capacity considerably exceeding these figures. It is, therefore, no exaggeration to say that there is sufficient power still available on the Winnipeg River to supply the needs of a population and industries more than five times and possibly eight or ten times as great as was supplied in 1914 and 1915. In other words there is sufficient power to supply the needs of a population of from 1,500,000 to 2,500,000 persons, to provide direct employment for from 150,000 to 300,000 workers, and to turn out a product worth in the neighborhood of one billion dollars every year.