

MCCORMICK TURBINES

State your Requirements and send for Catalogue



Estimates Furnished for Complete Power Plants, and Results Guaranteed

Represents a pair of 30 inch McCormick Turbines, with Governor and Fly-Wheel for regulating speed. The Turbine Shaft is direct-connected to a 750 k.w. Generator.

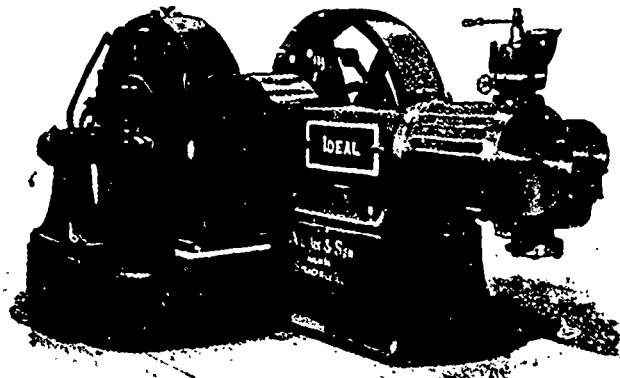
Four Outfits like this, developing 4,000 h.p., and one pair of 31 inch of 1,350 h.p., furnished the Sacramento Electric, Gas & Railway Co., Folsom, Cal. Power is transmitted 23 miles.

S. MORGAN SMITH CO. - YORK, PA., U.S.A.

THE Goldie & McCulloch Co. LIMITED

MANUFACTURERS OF

IMPROVED STEAM ENGINES AND BOILERS



Flouring Mills, And the Erection of Same in the Most Complete Style of Modern Improvement.

Wool Machinery, Wood-Working Machinery, Saw Mill, Shingle and Stave Machinery, Fire and Burglar-Proof Safes and Vault Doors.

THE "IDEAL" HIGH SPEED ENGINE, DIRECT-CONNECTED.

SPECIAL ATTENTION called to the "WHEBLOCK" IMPROVED STEAM ENGINE, also the "IDEAL" HIGH SPEED ENGINE, cut of which appears above, as being Un-equalled for Simplicity, Efficiency and Economy in Working, and Especially Adapted for Electric Lighting, Street Railways, Etc.

† GALT, ONT.

BAIRD & TREE

MANUFACTURERS OF THE

TREE ROTARY ENGINE

Also J. R. Baird's Electrical, Gas and Gasoline Engines, Water Motors, Etc

ENGINE, BOILER, MILL AND FACTORY REPAIRING

Works: 39 Finkle St., Woodstock, Ont.

