

All the Latest News and Comment from the World of Finance

SHIPPING

MINIATURE ALMANAC.

September—Phases of the Moon.
Last Quarter . . . 1st 10 57m p.m.
New Moon . . . 9th 6h 53m p.m.
First Quarter . . . 16th 3h 21m p.m.
Full Moon . . . 23rd 5h 35m p.m.

Date.	D. of W.	Sun Rise.	Sun Sets.	H. Water a. m.	H. Water p. m.	L. Water a. m.	L. Water p. m.
29 Wed	6.24	6.03	3.11	1.31	9.29	21.54	
30 Thu	6.26	6.02	3.58	1.62	10.17	22.43	

BRITISH PORTS.

Manchester, Sept. 26—Arrd stmr Helge, Campbellton.
Liverpool, Sept. 25—Arrd stmr Sebe, Holland, Montreal.
Barry, Sept. 25—Arrd stmr Gallier, Horwood, Nfld.

FOREIGN PORTS.

Newburg, Sept. 26—Arrd stmr Windsor.
New York—Schrs Chesaco, Nova River, J. Howell Leeds, St. John; Wavonock, Miramichi; Daisy Farlin, Alma; H. H. Chamberlain, Gold River, Philadelphia, Sept. 26—Arrd schr Meola, St. John.
Boston, Sept. 25—Arrd schrs Millie Louise, Gaspe, P. Q.; Princess Barton, N. S.
Sled Sept. 25, stmr Constance, London.
Eastport, Sept. 25—Arrd schrs Magie Alice, St. John, N. B.; A. M. Carlie, Bay of Fundy for Long Island Sound.
Jacksonville, Sept. 26—Arrd schr Sadie C. Sumner, Providence.
New York, Sept. 26—Arrd schrs J. Howell Leeds, St. John, N. B.; Wavonock, Miramichi, N. B.; Daisy Farlin, Alma, N. B. for Ellizabethport; H. H. Chamberlain, Gold River, N. S.
Portland, Sept. 26—Sld stmr W. H. Dwyer, Clark City, Quebec.

MARINE NOTES.

LOST OVERBOARD.
Captain Hutchings of the American schooner Wavonock, at New York from Miramichi, reports that when his vessel was thirty miles west of Halifax, N. S., Sept. 17, one of the crew was lost overboard.

IN PULP TRADE.
The steamer W. H. Dwyer having completed unloading her cargo of pulp wood at Portland, Me., went to sea on Sunday morning, bound for Clark City, P. Q., where she will take on a cargo of baled pulp for the mills at Niagara Falls, after which she will be employed in the grain carrying trade.

SAILED THIS MORNING.
The steamer Palisade went to sea at two o'clock with a cargo of lumber and bound to the United Kingdom.

LONGSHOREMAN STRIKE.
Another strike of longshoremen at New York is reported at the docks on the west side of the city, all the coastwise steamers loading on the North river, the Eastern Steamship Corporation's boats included, being affected. The strike was not simultaneous, some of the crews stopping work in the middle of the forenoon, others at noon, while the men engaged in loading the steamer North Star did not quit until late Saturday afternoon, the steamer at the time having completed loading with the exception of one car of cotton which was left on the dock. The strike seems to be more of a question of unionizing the laborers rather than of an advance in wages, and if not quickly settled is likely to disarrange some of the steamer schedules, although but little difficulty is anticipated in handling the cargoes of the local boats running to New York.

CHICAGO GRAIN AND PRODUCE

(McDOUGALL & COWANS.)

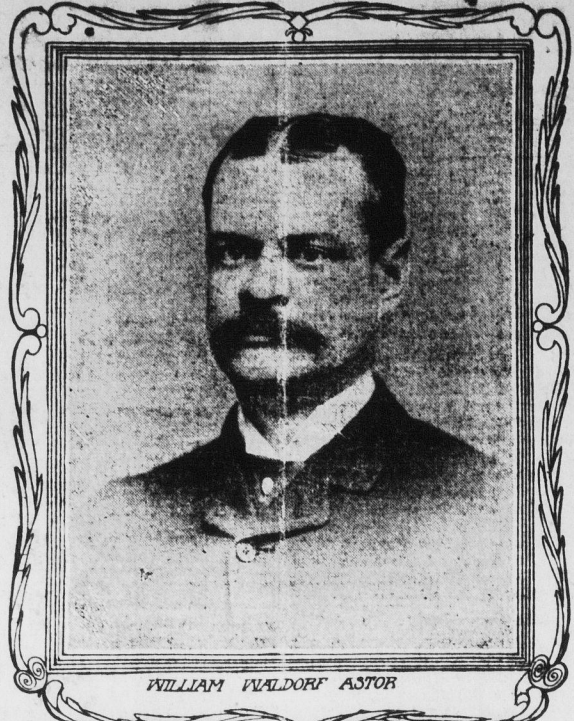
Chicago, Sept. 28.—Wheat—No. 2, red, \$1.20 1/2 to \$1.05; No. 3 red, 85 to \$1.00; No. 4 red, 80 to 95; No. 2 hard \$1.03 1/2 to \$1.05.	Corn—No. 2 yellow, 68 1/2 to 69 1/2; No. 3 yellow, 34 1/2 to 35; standard, 28 1/2 to 29 1/2.	Rye—No. 2, 95.	Barley—51 to 56.	Timothy—\$5.50 to \$7.25.	Clover—\$12.00 to \$19.00.	Pork—\$13.25; lard, \$8.32; ribs, \$8.67 to \$9.25.
Wheat.	High.	Low.	Close.	May 96 1/2	Sept. 105	Dec. 105
Corn.	High.	Low.	Close.	May 57 1/2	Sept. 68 1/2	Dec. 65 1/2
Oats.	High.	Low.	Close.	May 37 1/2	Sept. 38 1/2	Dec. 36 1/2

NEW YORK COTTON MARKET SALES

(McDOUGALL & COWANS.)

Date.	High.	Low.	Close.
Jan.	12.75	12.57	12.64
Mar.	13.04	12.82	12.93
May	13.16	12.98	13.08
July	13.37	13.00	13.19
Oct.	13.23	12.83	12.98

TO PAY \$1,250,000 IN BRITISH WAR TAX



WILLIAM WALDORF ASTOR

The smart, wealthy Anglo-American contingent in London will be hit severely by the increase in the new war income tax. They already have contributed largely to many forms of relief. Well informed Americans, in discussing the extent to which the pockets of these Anglo-Americans would be affected, estimated that William Waldorf Astor would have to pay approximately \$1,250,000 annually, according to the new rate, which is 33-1/3 per cent.

VOLUME OF TRADING YESTERDAY LARGEST SINCE BEFORE THE WAR

Total Sales for the Session 1,690,000—Specialties rise to new prices, but several phenomenal gains reduced before closing hour.

New York, Sept. 28.—In its speculative aspects, most other considerations being lacking, today's market covered what has come to be regarded as familiar ground. Specialties, mainly these deriving profits from war contracts, ascended to higher levels, a few scoring extraordinary gains, only to lose them in large part with startling rapidity. Trading was on a larger and broader scale than yesterday's memorable session, and with the difference that certain old or dormant stocks vied at times with those of recent prominence for supremacy. Advances from Chicago pointing to an early announcement of the terms of the Anglo-French credit gave added strength to the list. In the final dealings, however, the weight of increased offerings overcame the market's digestive powers, and many large gains were reduced, while others were changed to moderate losses. Railroads were again under intermittent restraint, some leading issues being lower by one to two points. Improvement in this part of the list was quite general later, but here also profit-taking proved effective to the extent of wiping out most gains. Total sales amounted to 1,690,000 shares, the largest volume of business, according to available data, since the days immediately preceding the war, when the greater activity was at the expense of quoted values. Colorado Fuel's sudden rise of almost eight points at mid-day to 63 1/2, to the accompaniment of a more moderate movement in Great Northern Ore, revived rumors of a "deal" involving these and kindred concerns. United States Steel, with an overturn of 155,000 shares, closed at 78 3/4, a loss of 1 1/2. Bond trading was again very large, with general strength. Final disposal by the syndicate of the \$45,000,000 New York City bonds purchased early in the year offers proof of the better investment demand. Total sales of bonds, par value, aggregated \$5,673,000.

STOCK QUOTATIONS ON N.Y. EXCHANGE

(McDOUGALL & COWANS.)

Am Beet Sug	65	65 1/2	64 1/2	64 1/2
Am Car. Py	79 1/2	81 1/2	79 1/2	80 1/2
Am Loco	68 1/2	70 1/2	67 1/2	68
Am Smelt	87 1/2	87 1/2	86 1/2	86 1/2
Am Soda	74 1/2	74 1/2	73 1/2	73 1/2
Am Tele	125 1/2	125 1/2	124 1/2	124 1/2
Atchafson	104 1/2	104 1/2	103 1/2	104 1/2
Balt and O Co	89	89	87 1/2	88 1/2
Beth Steel	368	368	365	365
Brook Rap Tr	85	85 1/2	84 1/2	84 1/2
C. P. I.	56 1/2	56 1/2	55 1/2	56 1/2
Ctes and Ohio	56 1/2	56 1/2	55 1/2	56 1/2
Chino	45 1/2	46 1/2	45 1/2	46 1/2
Cent. E. L.	51 1/2	52	50 1/2	50 1/2
Can Pac	163	163	161	161 1/2
Cruc Steel	102	103	101	101 1/2
Erie Com	33	33	32 1/2	33
Gr Nor Pfd	121	121 1/2	121	121 1/2
Lehigh Val	146 1/2	147	146	147
Miss Pac	14 1/2	14 1/2	14	14 1/2
NY NH and H	68 1/2	68 1/2	67 1/2	68 1/2
NY Cent	97	97 1/2	96 1/2	97
Nor Pac	110 1/2	110 1/2	109 1/2	110 1/2
Penn	113 1/2	113 1/2	112 1/2	113 1/2
Press Stl Car	67 1/2	67 1/2	67 1/2	67 1/2
Reading Com	153 1/2	154	152 1/2	153 1/2
Rep Steel	53 1/2	53 1/2	52 1/2	53 1/2
St Paul	88	88	87 1/2	87 1/2
Sou Pac	94	94 1/2	93 1/2	93 1/2
Sloss	57 1/2	57 1/2	56 1/2	57 1/2
Studebaker	140 1/2	140 1/2	141	141 1/2
Un Pac Com	133 1/2	133 1/2	132 1/2	133 1/2
U S Steel Com	79 1/2	79 1/2	78 1/2	79 1/2
U S Steel Pfd	114 1/2	114 1/2	114 1/2	114 1/2
U S Rub Com	53	53	52 1/2	53
Westing Elec	123 1/2	123 1/2	122 1/2	123 1/2

PRODUCE PRICES ON MONTREAL MARKET

Montreal, Sept. 28.—Corn, American No. 2 yellow, 81.
Flour—Man. spring wheat patents, 15.00; firsts, 15.45; seconds, 15.35; strong, 15.10; bakers, 15.15; winter patents, whole, 15.50; straight rollers, 15.40 to 15.60;

CLOSING LETTER OF N.Y. MARKET BY E. & C. RANDOLPH

(McDOUGALL & COWANS.)

New York, Sept. 28.—A violent advance in Baldwin to 150, followed by a severe break, made the market nervous and reactionary late in the day, but the standard railroads held up remarkably well, their action demonstrating the wisdom of considering safety rather than the chance of quick profits attended by such risks as must be faced by those who speculate in certain of the industrial specialties. There have been rumors of a contest for control of Baldwin Loco, and on these rumors a great number of speculators bought the stock. There is no certainty that new interests which bought into Baldwin really desire to obtain complete control of the company, and in the event that they did, it is proper to consider what would happen in the market for the stock if they secured all they want and their buying ceased suddenly. Baldwin has very large war orders, and no doubt the profits from these will put the company in a very strong financial position, but an advance which nearly doubled the price of the stock in a couple of weeks can hardly be justified by any change occurring in the company's affairs within that time. It is understood that a definite statement in regard to the Anglo-French loan will be made tonight and this explains much of the strength in the war order stocks. A number of new contracts are pending and may be signed in the near future but there are rumors of negotiations for war business on the part of companies which do not possess facilities for turning out that kind of product which will have great difficulty in getting the necessary machinery even if they succeeded in securing the business. The factor of war order business is very important in a number of cases, but is greatly exaggerated in many others. For rumors of new deals embracing C. P. I., Gr. Nor. Ore., Pittsburg Coal and a number of other companies, no confirmation has been found. Total sales stocks 1,831,100. Bonds \$5,731,000. E. & C. RANDOLPH.

McDOUGALL & COWANS
Members of the Montreal Stock Exchange
58 Prince Wm. Street, St. John, N. B.
SECURITIES BOUGHT AND SOLD IN ALL MARKETS
LISTED STOCKS CARRIED ON MARGIN
OFFICES:—Montreal, Quebec, Vancouver, Ottawa, Winnipeg, Halifax
Connected By Private Wire.

LONDON GUARANTEE AND ACCIDENT CO. Ltd.
Assets in England \$5,551,680
Reserve 197,880
Assets in Canada 445,134.75
Automobile Insurance; Fire Policy; Employees Liability; Contractors' Insurance; Accident Sickness and Guarantees.
CHAS. A. MACDONALD & SON, Provincial Agents.

FIRE INSURANCE
We represent first-class British, Canadian and American tariff offices with combined assets of over One Hundred and Sixty Million Dollars
C. E. L. JARVIS & SONS, 74 Prince Wm. St.

THOMAS BELL & CO., St. John, N. B.
PUGLEY BUILDING, 48 PRINCESS STREET
Lumber and General Brokers
SPRUCE, HEMLOCK, BIRCH, SOUTHERN PINE, OAK, CYPRESS,
SPRUCE PILING AND CREOSOTED PILING.

Pre-eminently the Favorite..
"Have used it for years" is the reply when you ask your friend if he ever tried
Whyte & Mackay's Scotch Whisky
It is purer and better—milder and mellow—richer and smoother—than most brands. Its popularity continues to increase.

MONTREAL MARKET

(McDOUGALL & COWANS.)

Ames Holden Com	Bid.	Ask.
Ames Holden Pfd.	15 1/2	15 3/4
Brazilian L. H. and P.	54	54 1/2
Canada Car	107	108
Canada Car Pfd.	120	120 1/2
Canada Cement Pfd.	29	29 1/2
Can. Cotton	26	27
Crown Reserve	36	36 1/2
Detroit United	62	62 1/2
Dom. Bridge	144	144 1/2
Dom. Cannons	31	31 1/2
Dom. Iron Pfd.	93	95
Dom. Text. Com.	46 1/2	46 3/4
Dom. Text. Pfd.	73	75
Laurentide Paper Co.	137 1/2	138
Lake of Woods	134	134 1/2
Mt. L. H. and Power	223 1/2	223 3/4
N. Scotia Steel and C.	87	88
Ottawa L. and P.	120	120 1/2
Ogilvie	137 1/2	138
Pennam's Limited	50	50 1/2
Quebec Railway	137 1/2	137 3/4
Shaw W. and P. Co.	137 1/2	137 3/4
Sher. Williams Co.	55	55 1/2
Steel Co. Can. Com.	34 1/2	34 3/4
Steel Co. Can. Pfd.	86	86 1/2
Toronto Ralls	111	111 1/2
Tuckett's Tobacco	29	29 1/2
Winnipeg Elect	180	180 1/2

W. Simms Lee, F. C. A.
Chartered Accountant and Auditor.
Queen Building, HALIFAX, N.S.
Box 723

ROBERT CARTER
CHARTERED ACCOUNTANT
Auditor and Liquidator
Business Systematized
McCurdy Building, Halifax.

Charlottetown Electric Co.
6% BONDS
Price 95
H. M. BRADFORD
Metropole Building, Halifax

STEAMSHIPS.

WEST INDIES
ST. JOHN-FREDERICTON ROUTE
From ST. JOHN (N.B.) and HALIFAX (N.S.)
Excellent Accommodations for 1st, 2nd & 3rd Class Passengers. Special Facilities for Tourists.
Next Sailing: ST. JOHN: R. M. S. P. Chaudiere, Oct. 8, 1915.
From: ST. John (via Halifax): R. M. S. P. Carquet, Oct. 10, 1915.
Apply to The Royal Mail Steam Packet Co., 77-79, Beaufort Street, Halifax (N.S.) or to St. John (N.B.) in Via Tuesday & Co. Agents.

Eastern Steamship Lines
FALL EXCURSIONS
INTERNATIONAL LINE
LOW FARES
ST. JOHN to PORTLAND AND BOSTON
Round Trip Fares Sept. 10 to Oct. 6
Return limit 30 days.
Portland, \$6.50
Boston, \$7.00
Tickets and stationers at City Ticket Office, 47 King St., also at Wharf Ticket Office.

Majestic Steamship Co.
Steamer Champion
On and after June 5th str. Champion will leave Public Wharf, St. John, on Tuesday, Thursday and Saturday at twelve o'clock noon for Halifax, Point and intermediate landings. Returning on alternative days at 1 p. m. R. S. ORCHARD, Manager.

MANCHESTER LINE
From Manchester
Sept. 7 Man. Eckington, Sept. 22
Sept. 13 Man. Engineer, Oct. 2
Oct. 2 Man. Miller, Oct. 16
WILLIAM THOMSON & CO., Agents, St. John, N. B.

Crystal Stream Steamship Co.
ST. JOHN-FREDERICTON ROUTE
The steamer D. J. PURDY will sail from North End for Fredericton and intermediate points every MONDAY, WEDNESDAY and FRIDAY at 3.30 a.m., returning ALTERNATE DAYS, leaving Fredericton 7.30 a.m.
The "D. J. Purdy" and "Majestic" can be chartered at any time for excursions and picnics.

ST. JOHN-WASHADEMOAK ROUTE
The steamer "MAJESTIC" will sail from North End for Cole's Island and intermediate points every TUESDAY, THURSDAY and SATURDAY at ten a.m., returning ALTERNATE DAYS, leaving Cole's Island at six a.m.
D. J. PURDY, Manager.
Warehouse No. 304.

THE MARITIME STEAMSHIP CO. (LIMITED).
Until further notice the S. S. Connaught will sail as follows:
Leave St. John, N. B., Thorne Wharf and Warhouse Co. on Saturday, 7.30 a.m., for St. Andrews, calling at Dipper Harbor, Beaver Harbor, Black's Harbor, Back Bay, or Letete, Deer Island, Red Store, St. George's. Returning leave St. Andrews Tuesday for St. John, calling at Letete or Back Bay, Black's Harbor, Beaver Harbor and Dipper Harbor, due and weather permitting.

FURNESS LINE
From London
Sept. 30 Fraser River
Sept. 30 Kanawha
From St. John
October 2
October 23
WM. THOMSON & CO., Agents.

DONALDSON LINE
Montreal to Glasgow
S.S. "Athena" Oct. 4, Nov. 6
S.S. "Cassandra" Oct. 11, Nov. 13
Dates subject to change.
Passage Rates on Application.
The Robert Reford Co., Ltd.
Agents, St. John, N. B.

BRIDGES
Buildings and All Structures of Steel and Concrete
Design, Estimate and Construction
T. CUSHING, M. E. (M. I. T. Boston)
Civil Engineer
Creighton Ave., Creighton, P. E. I.
Work in Halifax, Fredericton, St. John's.

RAILWAYS.

FORTNIGHTLY SAILINGS
From ST. JOHN (N.B.) and HALIFAX (N.S.)
Excellent Accommodations for 1st, 2nd & 3rd Class Passengers. Special Facilities for Tourists.
Next Sailing: ST. JOHN: R. M. S. P. Chaudiere, Oct. 8, 1915.
From: ST. John (via Halifax): R. M. S. P. Carquet, Oct. 10, 1915.
Apply to The Royal Mail Steam Packet Co., 77-79, Beaufort Street, Halifax (N.S.) or to St. John (N.B.) in Via Tuesday & Co. Agents.

CANADIAN PACIFIC EXCURSIONS
Rates from St. John
MONTREAL
\$15.30
Tickets on sale Sept. 16th, 17th and 18th. Limit, October 4th.
Also Sept. 30th, October 1st and 2nd. Limit, October 18th.
BOSTON
\$10.50
Tickets on sale daily, Sept. 18 to Oct. 16. Limit, thirty days.
NOTE—Effective Sept. 27th, Boston Express will leave St. John 6.40 p.m. instead of 7.00 p.m. (Atlantic).
W. S. HOWARD, D. P. A., C. P. R., St. John, N. B.

CANADIAN GOVERNMENT RAILWAYS
INTERCOLONIAL
PRINCE EDWARD ISLAND BY
OCEAN LIMITED (Daily).
Departs Halifax 8 a. m.
Departs Moncton 2.25 p. m. Arrives Montreal 5.05 a. m. following day.
MARITIME EXPRESS
(Daily except Sunday).
Departs Halifax 3 p. m.
Departs St. John 6.10 p. m.
Arrives Montreal 6.30 p. m. following day.
Panama Pacific Exposition, San Francisco. For latest information regarding fares, routes, time tables, etc. consult City Ticket Agent.

THE NATIONAL
A New Train via a New Route through a New Country.
Between Eastern and Western Canada via Grand Trunk
Temiskaming and N. O. Ry.
International Ry.
Dep. Toronto 10.45 p. m. Tues. Thurs Sat. Arr. Winnipeg 3.50 p. m. Thurs. Sat. Mon.

Autumn Excursions TO MONTREAL
From St. John, - \$15.30
Going September 30, October 1 and 2
All Tickets Good for Return Oct. 18th

STEAMSHIPS.

Eastern Steamship Lines
All-the-Way-by-Water.
INTERNATIONAL LINE.
Steamships, Calvin Austin and Governor Cobb
Leave St. John, Mon., Wed., and Fri., at 9 a. m., for Lubec, Eastport, Portland and Boston. Return leave Central Wharf, Boston, Mon., Wed., and Fri., at 9 a. m.
MAINE STEAMSHIP LINE
Steamships North Land and North Star
Leave Franklin Wharf, Portland Tues. Thurs. and Sat., at 6.30 p. m. City Ticket Office, 47 King Street.
A. C. CURRIE, Agent, St. John, N. B.
A. E. FLEMING, T. F. & P. A., St. John, N. B.

GRAND MANAN STEAMSHIP CO.
Atlantic Standard Time.
After June 1st, 1915, and until further notice the steamer Grand Manan will leave Grand Manan Monday 7 a. m. for St. John, arriving 2.30 p. m. Returning leave Lunenburg Wharf, Tuesday 10 a. m. for Grand Manan, both ways via Campbellton, Eastport and St. John.
Leave Grand Manan Friday 6.30 a. m. for St. John direct, arriving 11 a. m. Returning leave St. John 2.30 p. m. for Grand Manan, arriving 7 p. m. same day.
Leave Grand Manan Saturdays 7 a. m. for St. Andrews, arriving 11 a. m. returning same day 1.30 p. m. for Grand Manan, both ways via Campbellton and Eastport.
LAWTON C. GURTELL, Mgr.

The Steamer Victoria
Will leave St. John (Old May Queen wharf), every Tuesday, Thursday and Saturday at 8.30 a. m. for Fredericton; will leave Fredericton every Monday, Wednesday and Friday at 7.30 a. m. THE VICTORIA S. S. CO. LTD., Fredericton, N. S.
W. S. HOWARD, D. P. A., St. John, N. B.

Late

BASEBALL IN THE

NATIONAL L.

Philadelphia, Sept. 28.—
Brooklyn, Sept. 28.—
Chicago, Sept. 28.—
Cincinnati, Sept. 28.—
Cleveland, Sept. 28.—
Detroit, Sept. 28.—
Pittsburgh, Sept. 28.—
St. Louis, Sept. 28.—
Washington, Sept. 28.—

FEDERAL L.
Pittsburgh, Sept. 28.—
Pittsburgh, Sept. 28.—
Pittsburgh, Sept. 28.—
Pittsburgh, Sept. 28.—
Pittsburgh, Sept. 28.—
Pittsburgh, Sept. 28.—
Pittsburgh, Sept. 28.—
Pittsburgh, Sept. 28.—

AMERICAN L.
Washington, Sept. 28.—
Washington, Sept. 28.—
Washington, Sept. 28.—
Washington, Sept. 28.—
Washington, Sept. 28.—
Washington, Sept. 28.—
Washington, Sept. 28.—
Washington, Sept. 28.—

National League
Philadelphia, Sept. 28.—
Boston, Sept. 28.—
Brooklyn, Sept. 28.—
Cincinnati, Sept. 28.—
Cleveland, Sept. 28.—
Detroit, Sept. 28.—
Pittsburgh, Sept. 28.—
St. Louis, Sept. 28.—
Washington, Sept. 28.—

Bringing
The Steamer Victoria
Will leave St. John (Old May Queen wharf), every Tuesday, Thursday and Saturday at 8.30 a. m. for Fredericton; will leave Fredericton every Monday, Wednesday and Friday at 7.30 a. m. THE VICTORIA S. S. CO. LTD., Fredericton, N. S.
W. S. HOWARD, D. P. A., St. John, N. B.