

At present the company has a saw mill and a wood barking mill under construction.

A settlement has been effected in the arbitration suit between the Edward Lloyd Company and the Sturgeon Falls Pulp Company in which the adjustment of nearly three quarters of a million dollars was involved. The terms of settlement will be formally announced on October 10th. Briefly the facts of the case are:—Some three years ago the Sturgeon Falls Pulp Company, of London, Eng., purchased from a Canadian organization all their rights to land, timber, water power, etc., at Sturgeon Falls. The purchase was absolute, the Canadian concern relinquishing every title to rights or options. The company erected pulp mills and operated them for two years. The erection of extensive paper mills was also begun, and these buildings were also completed, at a cost of over \$500,000. The Lloyds then made overtures for the property and finally purchased. Some time afterwards they claimed that there was not in the district a sufficiently large quantity of pulpwood, and that the water facilities were poor. On

the other hand, the Sturgeon Falls Pulp Company contended that there was enough wood to supply enormous quantities of pulp for years to come, and that in all other respects also the property was satisfactory. This contention seemed to be borne out by the reports of the Government experts who investigated this and other districts for the Government some time ago. In this report specific mention was made of the large supply of pulpwood in the Sturgeon Falls concession.

What promises to be one of the largest pulp mills in Canada is about to be built at Seven Islands, on the north shore of the St. Lawrence. Thomas Meaney, of Toronto, in conjunction with Clarke Bros., of New York, have purchased a magnificent water power on the St. Marguerite river, seven miles from the village of Seven Islands, and have also secured about 500 square miles of excellent spruce limits in the vicinity. It is the intention to build a large pulp mill, to be operated by electricity generated at St. Marguerite river, and to construct a railway from St. Marguerite to Seven Islands. The bay of Seven Islands is a deep and commodious harbor, and will afford excellent facilities for the shipment of the product of the mill. The details

have not yet been completed, although surveys are being made by the engineer for the work, Henry Holgal C. E.

Canada's exports of pulp wood and wood pulp in the last year amounted to \$3,335,265, of which \$966,920 was sold to Great Britain, and \$2,302,215 to the United States, \$66,194 worth going to other countries. The total exports show an increase of \$616,477 over those of the preceding year. There is an advance of \$366,372 in our sales to Britain. Those to the United States are larger by \$244,321. The exports of pulpwood showed an increase of \$494,247, the United States taking \$500,744 worth more than in 1900, and Great Britain \$6,172 less. The increase in sales of wood pulp was \$122,230, the details being as follows: Increase to Great Britain, \$372,544; increase to other countries, \$6,109; decrease to the United States, \$256,423. Thus while the United States increased their purchase of pulpwood from us by over half a million dollars and decreased their purchase of the manufactured article by over a quarter of a million, Great Britain's decrease was in the pulp wood, and that but small, while in the manufactured article, involving greater labor and the employment of a greater capital, the mother country took from Canada an increased amount greater than the decrease of the United States by \$116,121.

JOSEPH H. WALLACE, C. E.
MILL AND HYDRAULIC ENGINEER
PULP AND PAPER MILLS.

WATER POWER DEVELOPMENTS

Surveys, Examinations, Reports,
Preliminary Estimates, Plans,
Specifications, Consultation.

DREWSSEN COMPANY
CHEMISTS AND MILL EXPERTS
SULPHITE PULP MILLS.

Drewsen Acid System

Drewsen Reclaiming System

Richards-Drewsen Chip Separator

Herreshoff Pyrites Furnace

The above are associated in the furnishing of expert services for industrial development.

OFFICES: Temple Court Building, Beekman and Nassau Sts., NEW YORK. - WEBBWOOD, Ontario

CHAS. H. VOGEL Mill Architect
and Engineer
BUCKINGHAM, QUE.
SPECIALTIES—PAPER, PULP AND SULPHITE PULP
MILLS, ELECTRIC PLANTS, SURVEYS AND
IMPROVEMENTS OF WATER POWER.
Many years' practical experience. References on application.

DUNDAS AXES

In the Crown Jewel single and double bit and Perfect Jewel single bit inserted, we use a high grade of steel to get the necessary tensile strength to make an axe that will stand in frosty weather.

Dundas Axe Works Dundas, Ont.

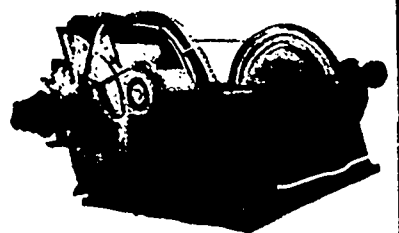
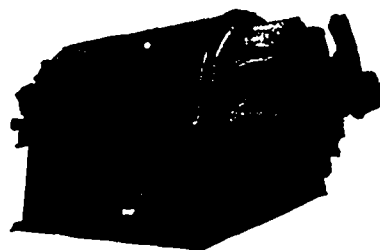
JOHN BERTRAM & SONS
DUNDAS, ONT.

MANUFACTURERS OF .

PAPER MACHINERY

Cylinder Moulds
Wet Machines

Cutters
Dryers



"Experience has shown that unquestionably the easiest plants to govern are those in which the turbines are set in open flumes leading directly from open forebays."—GARRATT

The cuts above illustrate one of our methods of placing water wheels in open flumes, as applied to a pair of our

CROCKER PATENT TURBINES

arranged horizontally, for direct connection to main shaft or otherwise. We have several other designs for open flume settings, adapted to single wheels, or for pairs, and to suit particular locations.

We are prepared to examine and report on water powers, and to advise as to methods of development for the same. Estimates promptly submitted. Send for Bulletin No. 200, 88 pages, of interest to all owners and users of water power.

THE JENCKES MACHINE CO.

38-40 Lansdowne Street

SHERBROOKE, QUE.

81 York Street, Toronto

Rossland, B.C.

Halifax, N.S.

~ CORRESPONDENCE SOLICITED ~