

CAR MAPLE SYRUP

Here. Guaranteed Pure.

Try sample case and
you are sure to order
more.

ORANGES

PRICES:

\$3.75 for extra choice.
Fancy \$4.50.

PIEPLANT

In 50 lb. boxes, \$2.50

THE MACPHERSON FRUIT CO.

LIMITED.

493 Main St., Winnipeg

Write for prices and Catalogue of

KOKOMO WOVE WIRE FENCING

Best fence on the market.

MARSHALL-WELLS CO.
WHOLESALE HARDWARE,
WINNIPEG.

THE WESTERN PACKING COMPANY

Our new abattoir on Alexander avenue
is now completed and running, and we
are ready to supply the trade both in the
city and country with fresh killed meat of
finest quality. Mail orders given
prompt attention.

We are also open to buy live or dressed
hogs and all kinds of produce, paying
highest cash prices for same.

Abattoir and Offices

ALEXANDER AVENUE, - WINNIPEG

STEEL SHEETS

"Q EENS HEAD" and "SOUTHERN
CROSS" brands of dead flat or ordinary finish.
No better sheets made anywhere. Blue Polished
or Imitation Russian Sheets, Electrical Sheets,
Tack Sheets, Etc.

JOHN LYSAGHT Limited
Makers, BRISTOL, ENG.

A. C. LESLIE & CO., Montreal
Managers Canadian Branch

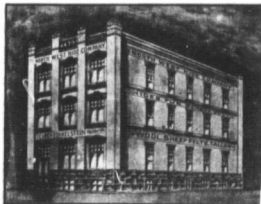
E. H. BISSETT, Agent, Winnipeg.

How is Your Boot and Shoe Stock?

If the sizes are broken, write to us and sort up. Our
stock is large, and complete. We can ship any size order
same day as received. If you think of opening in Boots and
Shoes, we are the people to see. Also Maple Leaf Rubbers.

87 Princess St.
Winnipeg.

The Kilgour, Rimer Co. Ltd.



Don't Neglect

as the season is approaching
when all hides will require
salting. You will do well
to ship.

Your Hides

In at once, before they spoil.
Ship all kinds of

Raw Furs

we pay the highest market
prices.

NORTH WEST HIDE CO.
Box 615, Winnipeg.

Headquarters for

**METAL SHINGLES
SIDINGS
CEILINGS
FURNACES
STOVES**

Write for Catalogue and Prices.

CLARE & BROCKEST
WINNIPEG.

Western Agents for
CLARE BROS. & CO.
Metal Shingle & Siding Co., Preston, Ont.

RAT PORTAGE LUMBER COMPANY

LIMITED

Head Office and Mills at RAT PORTAGE, ONT.

MANUFACTURERS OF . .

**LUMBER,
LATH, SHINGLES,
SASH,
DOORS**

AND ALL KINDS
OF WOODWORK

WINNIPEG OFFICE, Room 53 Merchants Bank Building.

GREENSHIELDS LIMITED

Successors to
S. Greenshields,
Son & Co.
MONTREAL

Wholesale . .

**DRY GOODS
MEN'S FURNISHINGS
CARPETS, ETC.**

Winnipeg Sample Rooms:

412-414 McIntyre Block
Represented by—R. R. GALLAGHER, G.
M. NEWTON, A. C. RUSSELL,
J. E. WALKER.

MESSINA LEMONS

Let us have your order at once, as the
price is sure to advance.

We have two of the best brands on the
market, namely, St. Nicholas and St.
Ambrose.

They will arrive about the 10th or 15th
of May. Price \$4.00.

**THE IMPERIAL FRUIT
& PRODUCE CO. LTD**
WINNIPEG, MAN.

Gowans, Kent & Co.

Importers and Wholesale
Dealers in all kinds of

**China
Glass and
Earthenware**

358 Main Street,
WINNIPEG.

WANTED

Every Merchant in the West
to see our big range of

Fur Goods

Our Travellers will give you
the opportunity in due season.

EDGAR, CORISTINE & CO
Successors to Greene & Sons Co.
MONTREAL

FRANK LIGHTCAP

DEALER IN
**FEELS, WOOL
SENES, Etc.**

EXPORTER OF
NORTHERN FURS

Highest prices paid for consignments
and returns promptly made.

Write for circulars containing
reports and full quotations.

172-174 KING ST., WINNIPEG.
P. O. BOX 484.

Steve
shop at
10-12 C. V.
at Grand
Mr. W.
shows at
J. Bous
chased the
a new br
Morrick
Mrs. C.
opening
P. H. C.
bury, M.
sons.
Mr. C.
opening
sell.
Mr. L.
River, in
Meifort.
Wm. H.
and under
for sale.
Mr. Mu
is opening
Basswood
F. Y. N.
business
Thompson
G. L. T.
ing, furni
at Hamilt
Dillon
added har
The T.
Frailie,
goods and
Faulkner
new im
They will
goods.
J. A. O.
The Sup
comes ed
ment.
Prairie
in Manit
row escap
erty bur
The D.
granted le
Peck Co.
stock of
H. Wool
his partner
ering busi
time the
Brandon
shop. Cal
ed into p
ence bus
James F
received
of a new
Macgreg
Rise.
The No
wood has
bras, bou
and shoes,
ories and
operation
of which
the curb
hundreds
The H. B.
don, Ont.
their busi
Frith, of B
ringsman
Manitoba
writing re
hairs adm
of the int
ward in th
was last w
Notice is
between G
and Robert
in some m
dissolved
The Car
had, has
pose of en
shirts, et
ness of the
slave will
J. L. Nel
have secur
ing the co
sherry for
Company's
rory factory
The rit
erty is aff
onal of the
Company, h