

Westinghouse Motors

For Alternating and Direct Current Service

The 6 spindle drill press illustrated, is driven by a Westinghouse Type C Induction Motor.

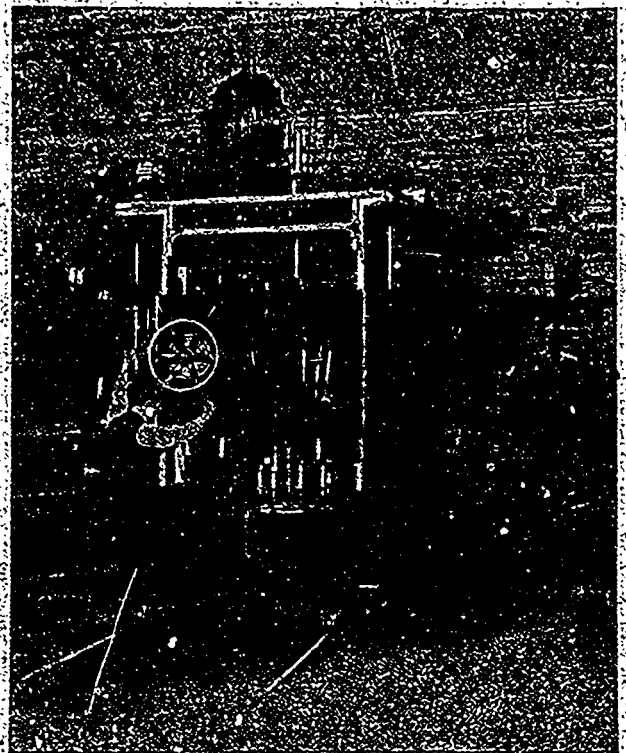
Direct drive for the individual tool enables the power to be applied just when wanted, and only when wanted. It further enables each tool to be used under conditions of maximum efficiency.

For particulars address nearest office of

Canadian Westinghouse Co. Limited

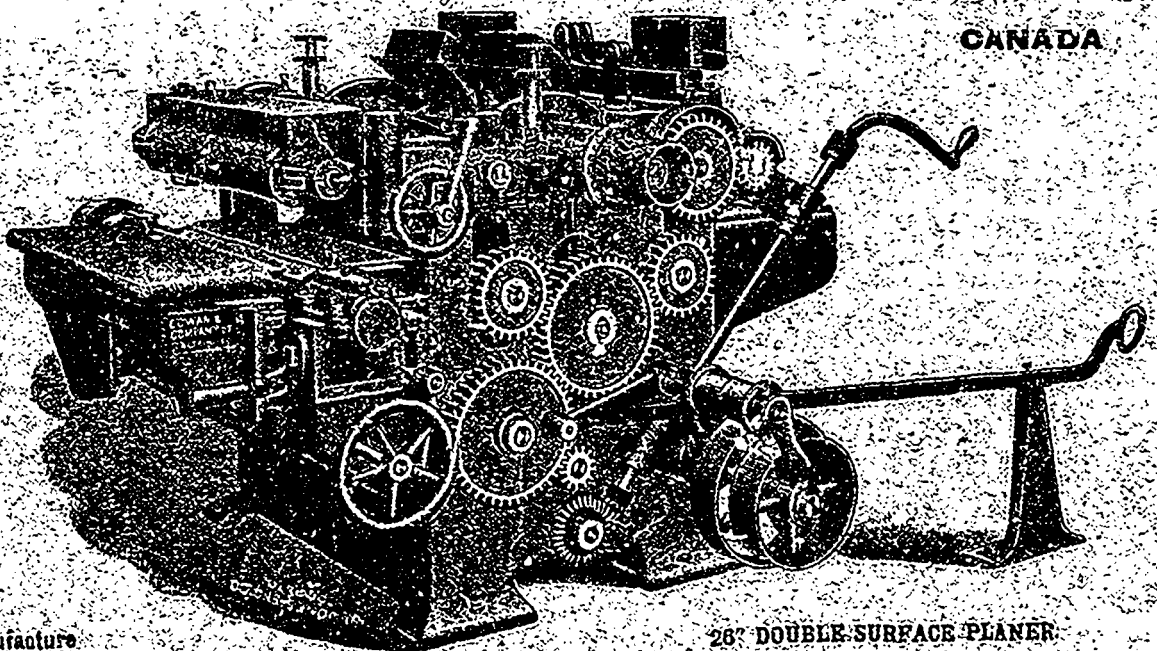
General Sales Office and Works,
HAMILTON, ONTARIO.

District Offices: Lawlor Bldg., King and Yonge Sts., TORONTO;
Liverpool & London & Globe Bldg., MONTREAL;
Hadden Block, VANCOUVER, B.C.



COWAN & COMPANY, of GALT, Limited, GALT,

CANADA



We Manufacture

26" DOUBLE-SURFACE PLANER

WOOD-WORKING MACHINERY OF ALL KINDS

Up-to-date in Every Particular.

WRITE FOR CUTS AND PRICES.

When writing to Advertisers kindly mention THE CANADIAN MANUFACTURER.