

ous to the shaft. A new dining room is also being built, and everything put in readiness for vigorously carrying on active mining operations. Thomas Phipbrook is still mining captain.

Beck Mine.—Mr. Beck has an option on this property, which adjoins the Triggs. Captain George McKenzie is still in charge at the mine, and has at present four miners under him. A shaft is being sunk on a promising looking quartz vein some distance to the northwest of the original shaft. Mr. Thornton, for whom Mr. Beck is acting, is expected out from Scotland about the middle of May.

The Sentinel Consolidated Gold Mining Co., Ltd.—The flow of water struck in the Sentinel shot, near Ash Rapids, will necessitate the putting in of a steam plant before operations can be resumed. In the meantime the force of miners has been withdrawn and put to work on a property on Camp Bay, adjoining the Bully Boy property and traversed by the Bully Boy vein. The Sentinel Company have obtained an option from the Coronado Company on Mining Locations S. 75 and McA. 75, from whom it may be remembered the option was obtained on the Sentinel mine by the Sentinel Co. Captain Proudlock has a contract from the Sentinel Co. to sink 60 ft. on this new property, for \$20.00 per foot, the Company supplying the mining outfit, a whim for hoisting and a horse to operate it; the shaft is to be 10 x 6 ft. Until after the opening of navigation the party will have the use of the Bully Boy camps, after which camps will be put up.

Stella—Has a force of four miners at work. It is said that a local man has a sort of option on the property, and will endeavor to put a deal through. No doubt active operations will be resumed at the mine before long.

Treasure.—A force of four men have been working all winter.

Teams are still travelling on the ice of the Lake of the Woods, but in two or three days this must come to an end. The lake will probably open about the usual date.

J. M.

— RAT PORTAGE, April 19, 1899.

Payne Mining Co's Dividends.—The shipments of ore from the Payne mine from 1st Jan., 1899, to 21st March, 1899, are officially reported at 2,638 tons of an estimated average net value of \$62.00 per ton. The dividends paid by this company have been:

Dividends paid to 30th April, 1898.....	\$550,000
Dividends since 30th April, 1898—	
April, 1898.....	\$50,000
May, ".....	25,000
June, ".....	25,000
July, ".....	25,000
August, ".....	25,000
September, ".....	50,000
October, ".....	50,000
November, ".....	100,000
December, ".....	50,000
January, 1899.....	25,000
February, ".....	25,000
March, ".....	25,000
	\$475,000

Total dividends to date.....\$1,025,000

Up to April 30, 1898, the company paid \$230,786 duty on lead contents of ore, all of which was shipped to the smelters in the United States. The freight and smelter charges for the same period amounted to \$362,986. The company also paid out of earnings \$56,743 43 for permanent improvements. Between April 30th and December 31st the company paid \$128,786 for duty and \$191,562 for freight and smelter charges. The Hall Mines Limited is now adding to its smelting plant at Nelson a smelter for the treatment of silver-lead ores, and the Canadian Pacific Railway has announced its intention to treat these ores at its smelter at Trail. When these smelters are completed it is evident that a great saving can be effected by the Payne Company in freight and duty.



SURVEYING, MINING

AND

ENGINEERING : : :

INSTRUMENTS. : : :

Accurate and Most Improved...



MINING TRANSITS.

Complete Line of Engineers
Instruments and Supplies.
Reasonable Prices. SEND
FOR CATALOGUE.....

Hearn & Harrison

NOTRE DAME ST.,
MONTREAL, QUE.

IMPULSE WATER WHEELS . . .
STEAM AND POWER PUMPS . .
GAS AND GASOLINE ENGINES
ELECTRIC LIGHT ENGINES . . .
MILL ENGINES
BOILERS

THE SMART-EBY MACHINE CO. LIMITED

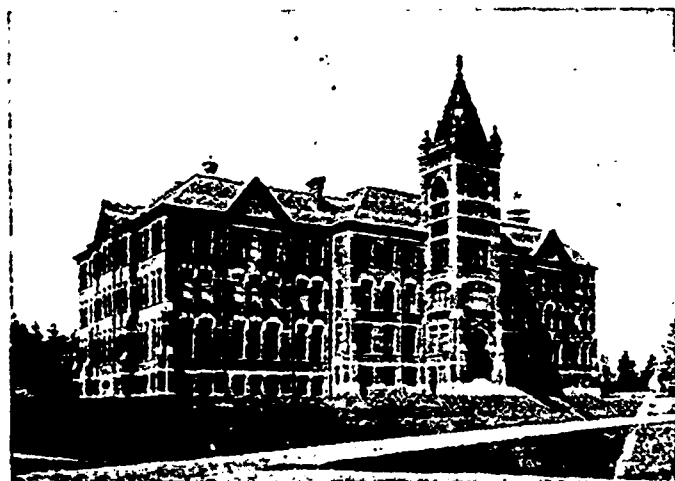
191 Barton St. East,
Hamilton, Ont.

Correspondence Solicited.

School of Practical Science, Toronto

ESTABLISHED 1878.

AFFILIATED TO THE UNIVERSITY OF TORONTO.



This School is equipped and supported entirely by the Province of Ontario and gives instruction in the following departments:

- 1—CIVIL ENGINEERING
- 2—MINING ENGINEERING
- 3—MECHANICAL & ELECTRICAL ENGINEERING
- 4—ARCHITECTURE
- 5—ANALYTICAL AND APPLIED CHEMISTRY

Special Attention is directed to the Facilities possessed by the School for giving Instruction in Mining Engineering. Practical Instruction is given in Drawing and Surveying, and in the following Laboratories:

- | | | |
|------------|----------------|--------------|
| 1—CHEMICAL | 3—MILLING | 6—ELECTRICAL |
| 2—ASSAYING | 4—STEAM | 7—TESTING |
| | 5—METROLOGICAL | |

The School also has good collections of Minerals, Rocks and Fossils. Special Students will be received as well as those taking regular courses.

FOR FULL INFORMATION SEE CALENDAR.

L. B. STEWART, Secretary.