

BELLISS & MORCOM

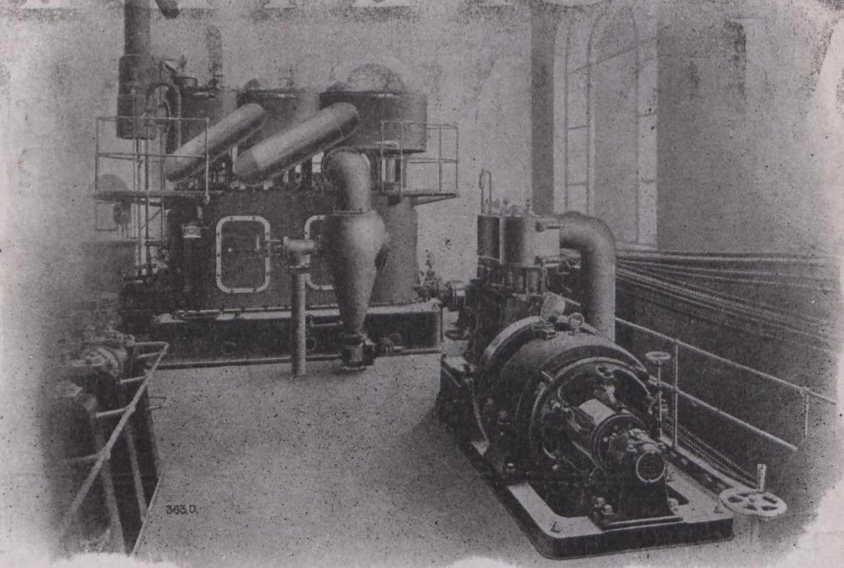
Air Compressors

Diesel Engines

Steam Turbines

Condensers

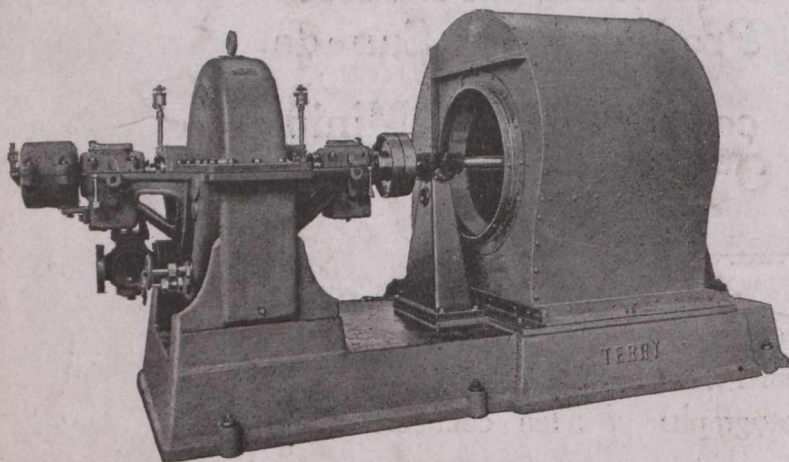
Steam Engines



**LAURIE
& LAMB**

TRIPLE AND COMPOUND ENGINES.

211 BOARD OF TRADE BUILDING, MONTREAL



TERRY FORCED DRAFT UNIT
Used extensively because of
its flexibility, reliability
and low cost of up-keep.

**From 0 to Full Speed
In Less than 60 Seconds**

is made possible by the sturdy design of the Terry turbine and the fact that the case is only subject to exhaust pressures and temperatures. When occasion arises to suddenly throw into operation standby apparatus you will be insured of instant and reliable operation of your auxiliaries if they are driven by

THE TERRY TURBINE

Because of the unique construction of the Terry Wheel, water carried over from the steam line does not injure the turbine buckets, nor does it impair proper operation.

The simplicity, accessibility and reliability of this turbine is such as to warrant your immediate investigation. Write for Bulletin 24 for the many reasons why you should

Specify Terry for Driving Your Auxiliaries

FRASER & CHALMERS OF CANADA

GUARANTEE BUILDING

LIMITED

MONTREAL, QUE.