

## PERSONAL

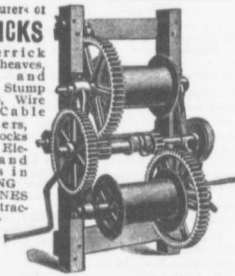
The news comes from Montreal of the death of Mr. William Currie, Esq., senior member of the firm of W. & F. P. Currie & Company and of the Dominion Paper Company. Mr. Currie had been ill with pneumonia and confined to the house for a few days, but a fatal termination to his illness had not been looked for. He was one of the oldest and most respected merchants in Montreal. The funeral took place on December 29th.

James R. McDonald, contractor, of Sydney, is dead.

Thomas Howard, contractor, Yonge street, Toronto, is announced to have assigned to E. R. C. Clarkson.

It is estimated that during the past year buildings to the value of \$500,000 were erected in the town of Glace Bay, N. S., the largest contractors being Hugh Cameron and Angus McAskill.

Manufacturers of  
**DERRICKS**  
and Derrick  
Irons, Sheaves,  
Hooks and  
Chains, Stump  
Pullers, Wire  
and Cable  
Stretchers,  
Tackle Blocks,  
Material Elevators,  
and Dealers in  
HOISTING  
ENGINES  
and Contractors'  
Supplies.



National Hoist & Machine Co.  
453 West 22nd Street, Chicago

## McGREGOR & McINTYRE, LIMITED,

65 to 73 Pearl Street, Toronto, Ont.

### STRUCTURAL IRON WORKS

*Fire Escapes, Library Racks, Sidewalk Door, Jail Cells, Iron Stairs, Railings, Etc., Etc.*

WRITE FOR ESTIMATES.

## PORTLAND CEMENT

### T. M. Morgan

Manufactures the

## Grescent and Diamond Brands

AS GOOD AS THE BEST FOR ANY PURPOSE

Office and Works : Longue Point, MONTREAL, QUE.

Long Distance Phone East 4362.

## R. F. WENTZ ENGINEERING CO.

Consulting Engineers and Cement Work Specialists

Designing Cement Plants.

Specifications and Estimates.

Superintendence of Construction.

Inspection and Reports of Cement Material and Properties.

Analysis and Tests of Raw Material and Cement.

Designed and constructed 24 CEMENT PLANTS in United States and Canada.

20 YEARS PRACTICAL EXPERIENCE designing, constructing and operating cement works.

CEMENT PROPERTIES FOR SALE.

For further information address—

**ROBERT F. WENTZ, M.W.S.E., PRES'T**

OFFICES: 12-15 Babb's Block,  
509-510 Manning Chambers,

NAZARETH, PA., U. S. A.  
TORONTO, ONT., CAN.

## The Canadian Bridge Co., Limited

WALKERVILLE, ONT.

MANUFACTURERS OF

## RAILWAY AND HIGHWAY BRIDGES

Locomotive Turn Tables,  
Roofs, Steel Buildings and  
Structural Iron Work of all descriptions

## PORTLAND CEMENT, HYDRAULIC LIME, CHINA CLAY

### E. FREEMAN, 20 Bucklersbury, LONDON, ENG.



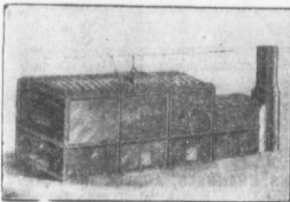
Sole Agent for U.K. and Colonies for Oldest Continental Works



Supplying to Contracts on the Principal Railways, Large Sewage and Sea Defence Works, etc., in England. Will be Pleased to Quote to the Wholesale Trade Only.

CORRESPONDENCE INVITED FOR CONTROL OF BRANDS

## PERFECTION STEEL-CLAD AND BRICK SET INCINERATORS



MANUFACTURED BY

*Toronto Furnace & Crematory Co., LIMITED*

14 and 16 Queen St. East, TORONTO, CANADA

Experts in sanitary disposal of dangerous wastes,

**Garbage, Refuse, Night Soil, Dead Animals,**

For Cities, Towns, Hospitals, Hotels, Abattoirs, etc.

The plants embody the newest features of modern practice and are constructed to meet the requirements of the smallest towns and the largest cities, capacities ranging from 4 to 100 tons daily. Correspondence invited.