



General view of the Agricultural Hall, London, Eng., where the Dairy Show was held last month.

## Our English Letter

### The Season—Continental Agriculture—Royal Show—Dairy Show—Rating Barley—Trade Prospects and other items.

The season has been rather of an exceptional nature and winter has come upon us early. The middle of October has brought with it frosts and even falls of snow in the Welsh and Scotch mountains; this is something like a month earlier than usual and the general impression is that we are in for a severe winter. As, however, the weather prophets have been predicting for the last half a dozen years an "old-fashioned winter" and have been incorrect in so doing, it is time they had their turn. Fogs have already made their appearance and it is probable that we shall have more than our fair share of this trouble, as both August and September were wet months. On the whole, however, it should be borne in mind that the rainfall has been below the average, the deficiency being particularly confined to the spring months. A Gloucestershire correspondent favors me with the following on the weather and crops in his district:

"On the farm at present there is not much to write about; the weather continues dry and work is well forward, here and there an early planted field of winter oats and rye is up nicely, but just now many are waiting for rain to begin drilling wheat; the clover leys are even too hard to plow. Mangolds are being hurriedly got up for fear of more frost; we have had some very sharp ones lately; many heavy crops are seen but most of the large roots cut hollow which will be against their keeping. The threshing machines (which are very busy) reveal that the wheat crop was overestimated for quantity but it is of excellent quality. The price of both stock and produce is quite disheartening, the sheep trade is the only thing with any life about it and even that is falling off."

#### CONTINENTAL AGRICULTURE

On the continent the winter has also arrived before its usual time, and from Eastern Germany I hear that snow has already fallen, causing great loss to agriculturists inasmuch as much of the harvest remains to be got in. In France the cold has seriously affected the sugar beet crop, many of the roots being caught by the frost. I have lately received from the Russian government a report on the census taken some little time ago, which gives some interesting figures upon the farming industry. The

total number of men employed by agriculture in the Russian Empire is 281,000, and 16,000 women. Cattle rearing occupies over 200,000 men and nearly 6,000 women.

#### THE ROYAL SHOW

Nothing has been definitely settled yet about the Royal Show for 1906, but the special committee appointed to enquire into the position of the society recommend that it shall be held away from London. It is fully expected that next year it will take place at Derby, and I understand that the site offered, which runs to about 60 acres in extent, is admirably adapted for the purpose. There was another competitor for the show, this being Blackpool, a Lancashire seaside resort, but Derby is likely to be the selected of the two. The council meet again at the beginning of next month, when it is anticipated that a new secretary will be appointed, or at all events a selection of the applicants will be put forward for further consideration. At the last council meeting I may explain, the whole of the staff were called upon to resign, and when the new secretary has been appointed only a few, if any, will be reinstated. The special committee in their report recommend that the show ground at Park

Royal should be liquidated and that the palatial offices in Hanover Square be sold. What, however, they failed to do was to enquire into the exact financial status of the society and give the members a simple balance sheet defining the exact position. I know, as an absolute fact, that many of the officials, to say nothing of the members of the council, do not know whether the society can pay twenty shillings in the pound. To go on under such conditions is suicidal and it is time that attention was given to this point and this point only.

Derby for next year's show seems a suitable centre. It is the head offices of the Midland Railway and on their main line and also taps a fairly prosperous agricultural district. It is to be hoped that the experiment of returning to a traveling show will be satisfactory financially, for another deficit would be fatal. Personally, I consider that Park Royal (London) would be successful eventually, provided that the area of show ground was modified and other alterations made to keep down expenses.

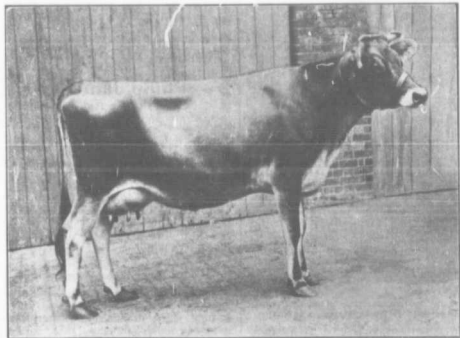
#### THE DAIRY SHOW

The annual exhibition of the British Dairy Farmers' Association is interesting to your readers, chiefly from the elaborate butter testing and milking trials. In the milking tests Mr. George Taylor's cow Melody won first and champion, having given over 2 lbs. of butter fat in two meals, and over 4 lbs. of solids other than fat during the same period. The Shorthorn buller test was won by Lord Rothschild's Broadhooks 3rd, with a butter yield of 3 lbs. 13 oz., and a milk ratio of 20.22 lbs.; that is to say, it took 20.22 lbs. of milk to make 1 lb. of butter. Second was Mr. Kelly's Dunbar Hearty with 1 lb. 13 oz. of butter and a ratio of 23.20 lbs. of milk. Dr. Herbert Watney's nine-year-old cow Red Maple won the Jersey test, as from one day's milk she yielded 2 lbs. 3½ oz. The second prize was won by Admiral the Hon. T. S. Brand with Rosina, whose figures were 2 lbs. 7¼ oz. of butter and 16.35 lbs. of milk. She had, however, not been calved so long as the winner.

"Does poultry keeping pay?" is an oft repeated question. It would if such prizes as were obtained at the dairy show for dead poultry could be obtained. A pair of cockerels, Indian Game-Dorking cross, fetched £4—a nice figure per oz.

#### BARLEY AT THE BREWERS' EXHIBITION

The malting barley section of the Brewers' Exhibition increases in importance every year. The entries, perhaps, do not expand largely, but the improvement in the quality of the samples



Earl Cadogan's Jersey Heifer, Granter 13th, winner of Rhythwood Bowl London Dairy Show, 1905. This bowl is given for the best Jersey cow or heifer bred in Great Britain or Ireland.