

# THE RAILWAY

BETWEEN

MONTREAL, QUEBEC, ST. JOHN, HALIFAX AND THE SYDNEYS

## INTERCOLONIAL



ROUTE OF  
CANADA'S  
FAMOUS  
TRAIN...

THE  
MARITIME  
...EXPRESS

Leaving Montreal 12.00 Noon  
Daily. ✕ Except ✕ Saturday

Write for 1905 new publications to  
GENERAL PASSENGER DEPT., MONCTON, N. B.

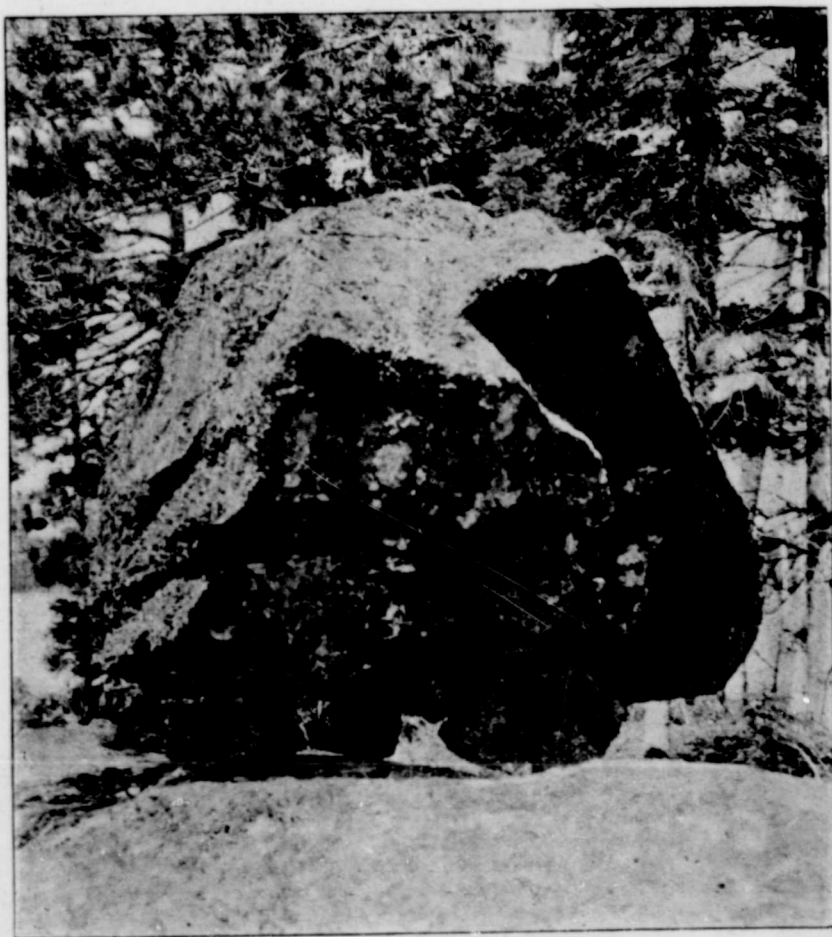
### CANADA ATLANTIC RAILWAY, BETWEEN OTTAWA AND MONTREAL.

Fast Trains at Convenient Hours  
ALL THREE HOUR TRAINS.

Solid Roadbed, Modern Equipment, Parlor Cars.

### THROUGH CAR ROUTE

Between Ottawa and New York. Magnificent Pullman Drawing Room  
Sleepers (Buffet Cars) Every Day Except Sunday.



PERCHED ROCK, ALGONQUIN PARK.

### Summer Excursions.

New Route to Georgian Bay Resorts, via Ottawa, Canada's Picturesque  
Capital, through 200 miles of lakeland, including Algonquin Park, com-  
prising 2,000 square miles of highlands, lakes and rivers. Finest canoe-  
ing and trout fishing in Canada. Ask nearest agent for descriptive  
folder or write to

W. P. HINTON, General Passenger Agent.

### AN INDUSTRY OF MAGNITUDE

How Ottawa Car Company's Operations Have Grown—Started in a Small Way,  
Twelve Years Ago, and now Employs 200 Men—What the  
Company Manufactures.

From small beginnings, one of the lead-  
ing manufacturing establishments in Ot-  
tawa has grown in twelve years to a con-  
cern with 200 men on its pay roll and an  
annual output of over a quarter of a  
million dollars. This is the Ottawa Car  
Company, Limited, the magnitude of  
which is known to but few people in  
Canada. The present directors are T.  
Ahearn, President; W. W. Wylie, Vice-  
President and Managing Director; W. Y.

tawa Car Company, formed in 1893. Cars  
manufactured in its shops are to be found  
from Sydney, C.B., to Vancouver, B.C.

#### EXTENT OF OPERATIONS.

The new company was authorized to  
issue \$200,000 of stock. Half of this has  
been paid in. The wages paid by the  
company each year amount to \$75,000.  
The operations of the company extend to  
carriage building, the building of limbers

machine shop with a number two univer-  
sal mill machine and shapers, tools and  
cutters, grinders without number in the  
departments for wood and iron working,  
and in the cabinet shop. In every depart-  
ment, especially in the painting and up-  
holstering, skilled mechanics are required,  
and these all draw a high rate of wages.

#### HIGHLY PRAISED.

The products of the company have been



Soper and J. D. Fraser, Secretary-Trea-  
surer.

When the Ottawa Street Railway was  
first built in 1891, cars were made at St.  
Catharines. It was soon found that they  
could be made in Ottawa just as well, and  
just as profitably in the factory of Mr.  
Wylie. So Messrs. Ahearn and Soper,  
the promoters and builders of the Ottawa  
Electric Railway, proposed to form a  
joint stock company for the manufacture  
and building of cars, and the big works  
bounded by Albert, Kent and Slater  
streets, and having 50,000 square feet in  
floor space, have come into existence.

The company was organized in Septem-  
ber, 1893.

Having found that better cars could be  
built in Ottawa than in any other place,  
the directors of the railway company,  
with characteristic energy, at once began  
to organize a new company for the con-  
struction of cars, and joined hands with  
Mr. Wylie. To-day the company is  
swamped with business, although it does  
no advertising, issues no catalogues, has  
no travellers on the road, and has no  
warehouses for the display of goods. Yet  
it does business all over Canada. Such  
is the success that has attended the Ot-

and gun carriages for the militia depart-  
ment, and the building of cars. It turns  
out upwards of 1,000 vehicles a year.  
There are 120 men in the carriage depart-  
ment, and sixty-five in the car manufac-  
turing branch. They are busy as the busy  
bee.

The company has always been solicit-  
ous as to the health of its employees, and  
the premises are steam heated and well  
ventilated. Dust, smoke and fumes are  
removed by an exhaust process of fans,  
and the place is lighted by arc and in-  
candescent lights. Electricity is develop-  
ed on the premises by an engine of 125-  
horse power.

In the blacksmithing department there  
is a series of vacuum and steam hammers  
that is a revelation to those not acquaint-  
ed with the application of mechanical  
force. A steam hammer strikes a 1,000-  
pound blow. An air vacuum hammer has  
500 pounds back of it. A specially con-  
structed machine for putting tires on  
wheels cold is operated by a 10-ton ham-  
mer with eighteen hydraulic rams, the  
combined pressure being over 100 tons.  
This obviates the old-time heating and  
cutting of tires and the process is quick  
and sure. There are five lathes in the

highly praised by the department of mil-  
itia. It constructs everything on wheels  
required. Timbers, transport and forage  
wagons, tool carts, engineers' wagons,  
ambulance wagons and water carts are all  
made. The attention of the carriage de-  
partment is directed more to the con-  
struction of heavy vehicles. Cabs, lan-  
daus, vis-a-vis, omnibus and hearses are  
among their products. The company also  
builds all the wagons for the Dominion  
and Canadian Express Companies, as well  
as the wagons used in Canada for the  
American Express Company.

The above cut represents a sample pro-  
duct of the works of the Ottawa Car Co.  
This beautiful 50-foot royal car was  
specially built for the Ottawa Electric  
Railway Company and was used upon the  
occasion of the recent visit of His Royal  
Highness the Prince and Princess of  
Wales, then the Duke and Duchess of  
Cornwall and York, in a tour in and  
around the City of Ottawa.

The record of the Ottawa Car Company  
is one of splendid achievement, and all  
who know and value the advantage to  
Canada of such an institution wish it  
well.