

by creative forces from above apart from conditions evolved from below.

Immediately after contact of the *sperm* cell with the *germ* cell, lively rotary motion is set up in the contents of the latter, beginning in the neighborhood of the "attraction particle," (Part I, 3, 1) and resulting in the division of the cell contents. Fig. A.

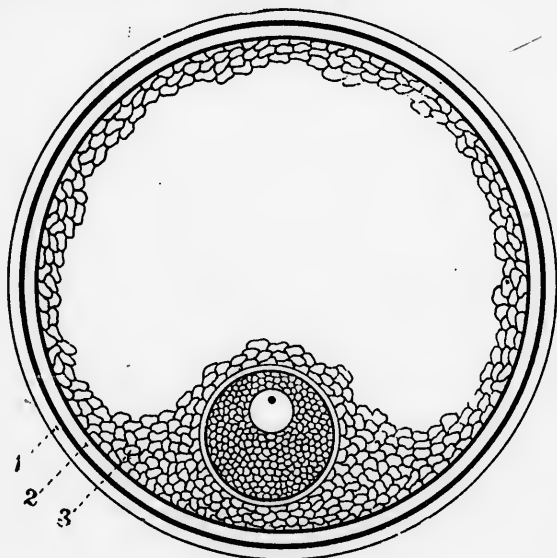


FIG. B.

Diagram illustrating Formation of Membranes.

Continued activity of the cell contents results in the cells being pushed together against the outer wall in layers, leaving the centre clear. Fig. B.