

# Talk over your future with the Bell employment reps when they visit your campus on

## November 22, 23, 24

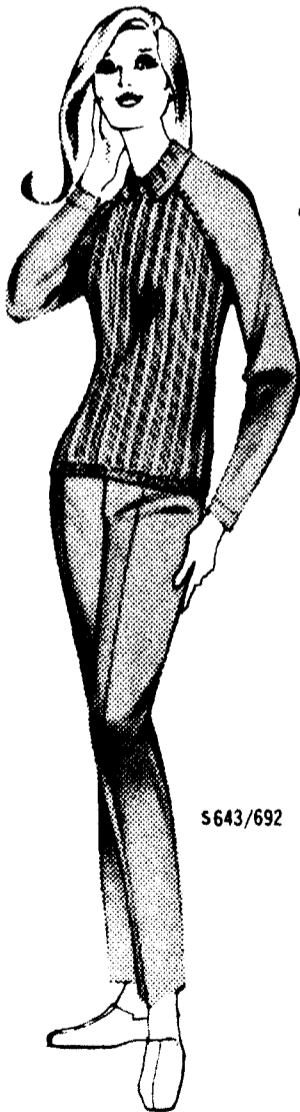
**GRADS-TO-BE-IN:**  
ENGINEERING · SCIENCE ·  
COMMERCE · ARTS ·  
BUSINESS ADMINISTRATION

Ask at your Placement Office  
for informative booklets and  
arrange for an interview now!



**Bell Canada**

LOOK YOUR STUNNINGEST!



Glenayr

# Kitten

Stun the fashion world in this machine-washable full-fashioned English Botany pullover. It's easy-to-care-for, comfortable, and a fashion favourite with its ribbed front and plain-knit back and sleeves, split collar with zipper closing, and Continental band and cuffs. In bright new shades.

To complete the pretty picture, these superbly tailored pure wool worsted slims, woven from superfine English Botany. They are dry-cleanable, and dyed-to-perfectly-match all bright new Kitten sweater colours.

5643/692

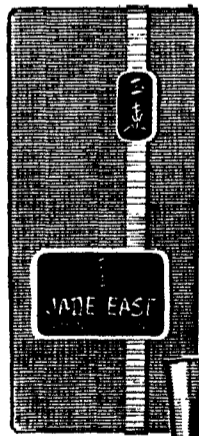


PURE VIRGIN WOOL  
Look for the  
Woolmark on the label

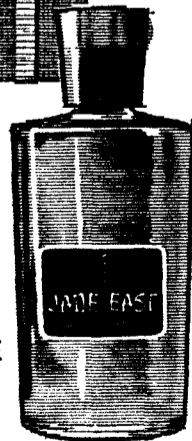
Without this label  it is not a genuine KITTEN.

exhilarating  
elegance  
for MEN

# JADE EAST



COLOGNE  
4 oz.  
\$4.75



AFTER  
SHAVE  
4 oz.  
\$3.75

Discerning men find luxurious  
pleasure in the subtle mascu-  
line scent of Jade East...worlds  
apart from the ordinary.

## leftovers

There have been complaints of late that there is no humour in the Gateway. We admit it; there is little enough humour on these pages; but we beg to be excused, for the fault lies not with us. For, though you may not believe it, humour is forbidden by law from appearing in the Gateway.

On February 17, 1943, Students' Council passed a resolution which read as follows:

"Resolved: That Casserole or any form of joke column be banned from all future issues of the Gateway due to the unfortunate issue of January 29 published under the auspices of the Engineering Students' Society . . ."

The resolution went on to express council's disapproval of such "perverted humour". Hence Casserole, a joke column from which this supplement takes its name, passed into history after more than twenty years of tickling the ribs of Gateway readers, and no attempt at revival has ever been made.

The issue of January 29, 1943, incidentally, was totally innocuous compared to the present efforts of the Engineers in their annual "Getaway"; and indeed it was scarcely more risqué than the usual Casserole columns.

All that is in the past now; but perhaps it will serve to explain why the reader cannot expect to find laughter in his university newspaper.

\* \* \*

The Students' Union budget presented in last Friday's Gateway probably is more than a little confusing to the non-mathematics major, and so we herewith present a small explication which may be of some help.

Each full-time undergraduate has paid \$35.50 in fees to the university. Of this amount, \$8.00 goes to the University Athletic Board, \$11.00 to the building fund (paying off the new SUB) and \$16.50 to the Students' Union. This last amount is distributed by Council to various clubs and activities, and is the subject of the annual budget.

It can be seen from this year's budget that the greatest allocations have gone towards administration and to the yearbook—\$53,000 and \$44,850 respectively. The per capita cost to each full-time student (if we ignore the small amounts contributed by other students) for the support of the yearbook works out to about \$3.90, which is 11% of your total fees or 24% of your Union dues.

This leads to some interesting speculation. Since 22½% of every student's fees goes to the UAB, and 11% to the yearbook, the poor student who neither participates in sports nor picks up his year book is, in effect, throwing away 33½% of his fees.

This is not to suggest, of course, that every fee-paying student should expect to reap the benefits of all the activities he helps to support; but nonetheless it seems highly disproportionate that over a third of everyone's fees must be allocated to two activities which are by no means universally enjoyed.

And yet there are those who advocate an increase in the UAB levy, and those who cling desperately to a yearbook which has far outlasted its usefulness. You figure it out.

\* \* \*

We have had another communiqué from our friend, the midnight denizen of SUB.

Sir:

*There's something I've been meaning to ask you people. I was sitting in a cubbyhole in the lower reaches of the building the other night, faithfully reading the Leftovers column by candlelight, when some guy came along and blew my candle out, threatening that I'd be kicked out of the building and maybe out of university if I continued having open fires.*

*I always used to think that I was the only person who got away with staying in the building all night (I mean besides you chaps at the Gateway, who are always there). So I was a little surprised to see this fellow at 2:00 a.m.*

*Who is this guy, anyway? Is he ordinary like you and me, or does he derive superhuman powers from that little button on his chest?*

*The Phantom*